



KASARA

Urban Resort Residences



PROJECT FACADE



AMENITY AREA

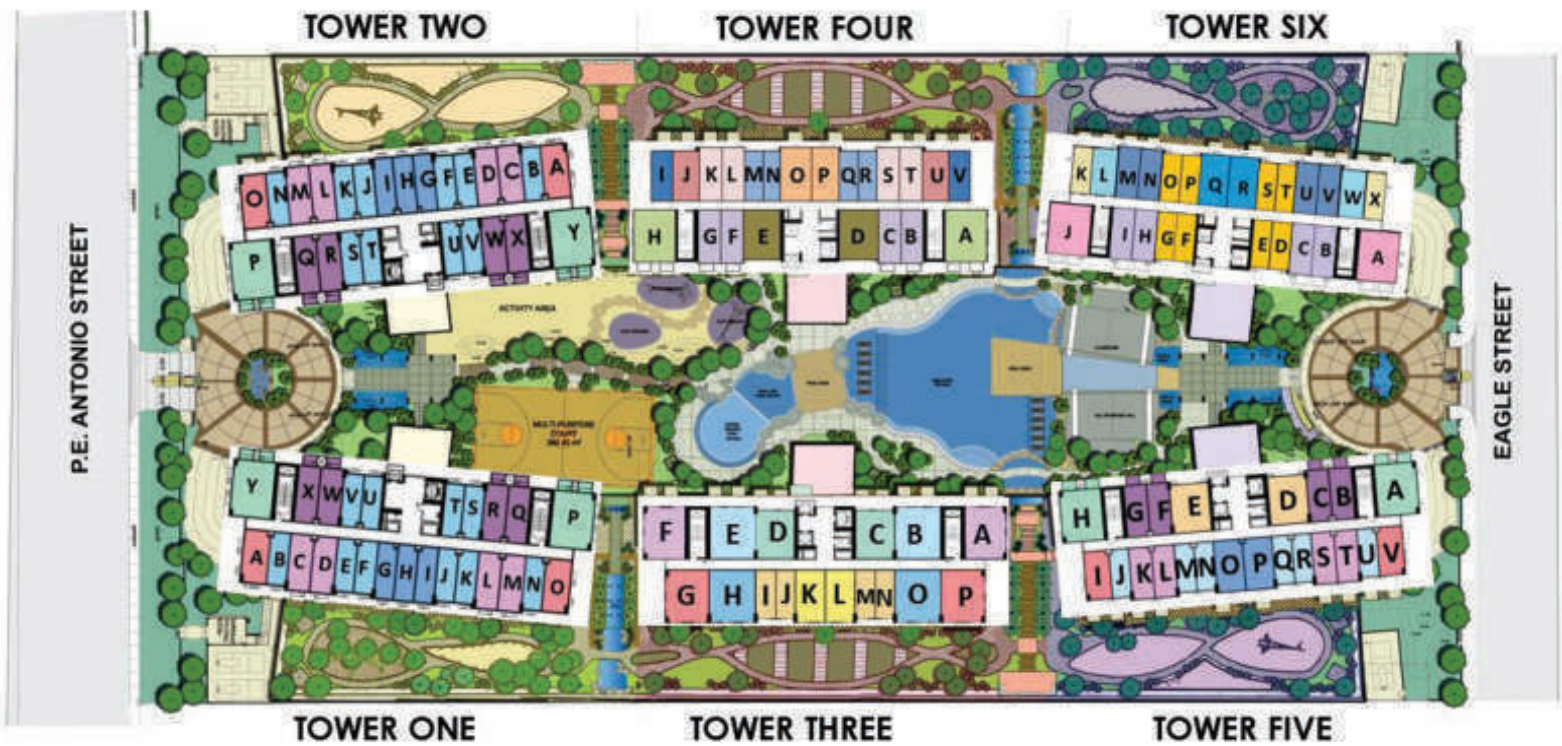


LOCATION MAP





SITE DEVELOPMENT PLAN



These renderings are based on the architect's perspective and do not form part of an offer or contract. Selling price is established principally on a per unit basis and not on the unit measurement or dimension. Empire East reserves the right to modify these illustrations without prior notice. Clients are invited to verify subsequent changes. As of April 2018. For reference and presentation purposes only.



TOWER FOUR PERSPECTIVE

Key plan



These renderings are based on the architect's perspective and do not form part of an offer or contract. Selling price is established principally on a per unit basis and not on the unit measurement or dimension. Empire East reserves the right to modify these illustrations without prior notice. Clients are invited to verify subsequent changes. As of October 2017. For reference and presentation purposes only.



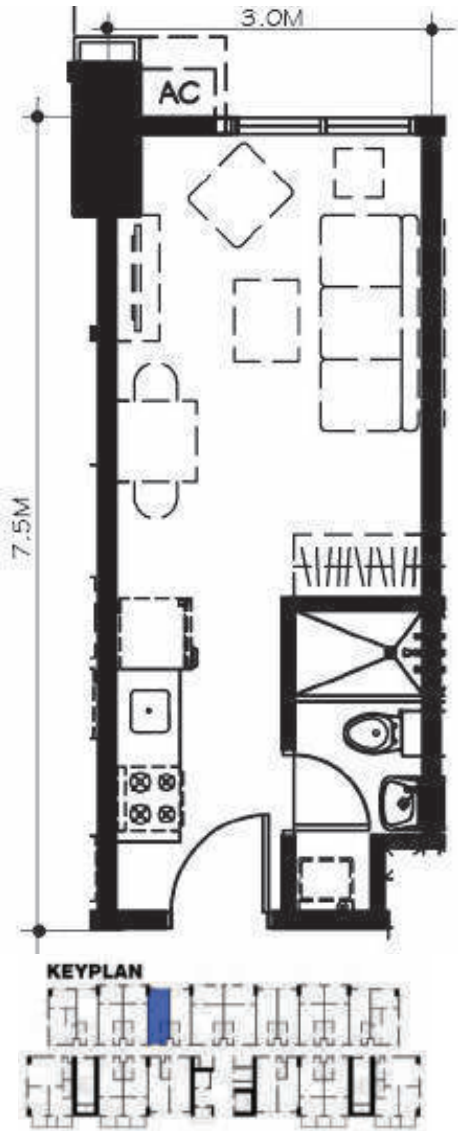
TOWER FOUR



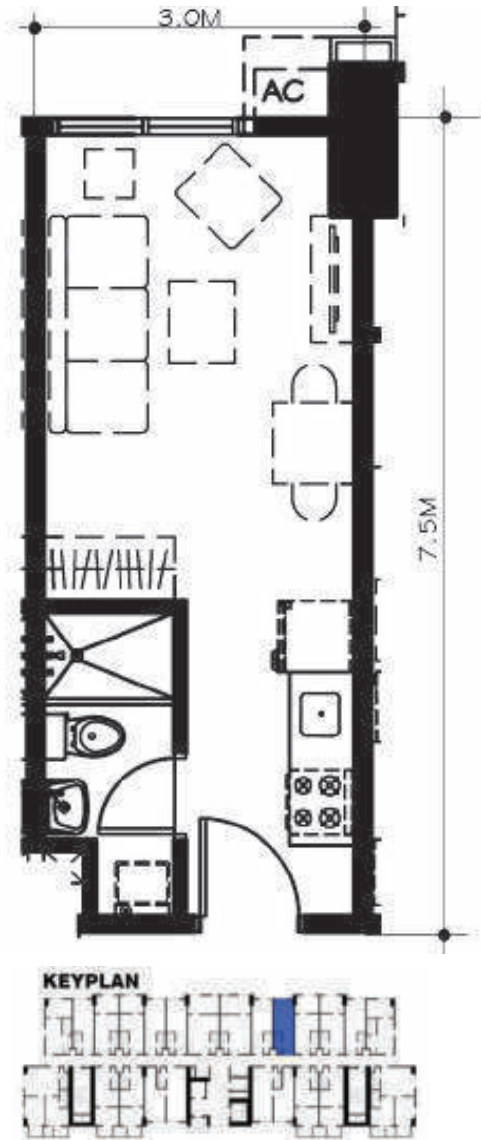
TYPICAL FLOOR PLAN 5th TO 29th LEVEL

These renderings are based on the architect's perspective and do not form part of an offer or contract. Selling price is established principally on a per unit basis and not on the unit measurement or dimension. Empire East reserves the right to modify these illustrations without prior notice. Clients are invited to verify subsequent changes. As of October 2017. For reference and presentation purposes only.

TOWER FOUR – UNIT LAYOUTS TYPICAL STUDIO UNITS



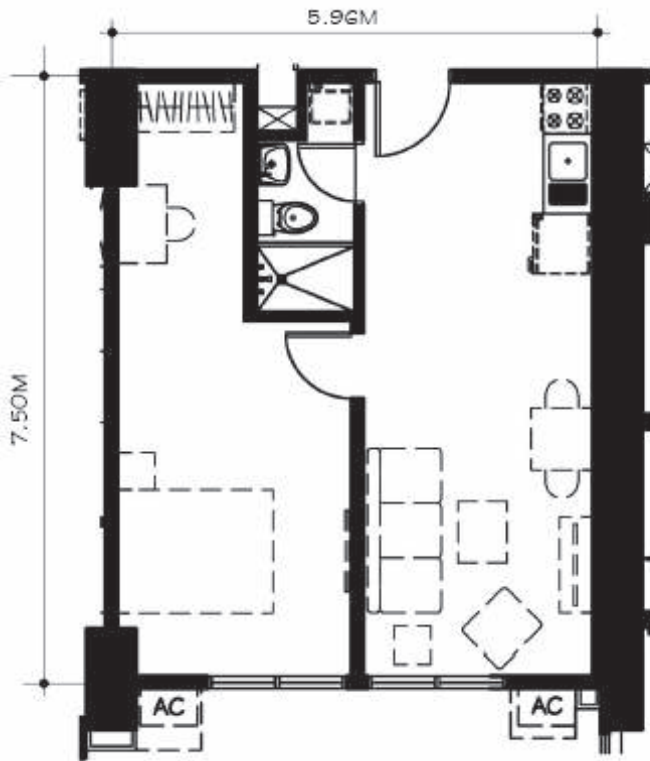
Unit M
22.73 SQM



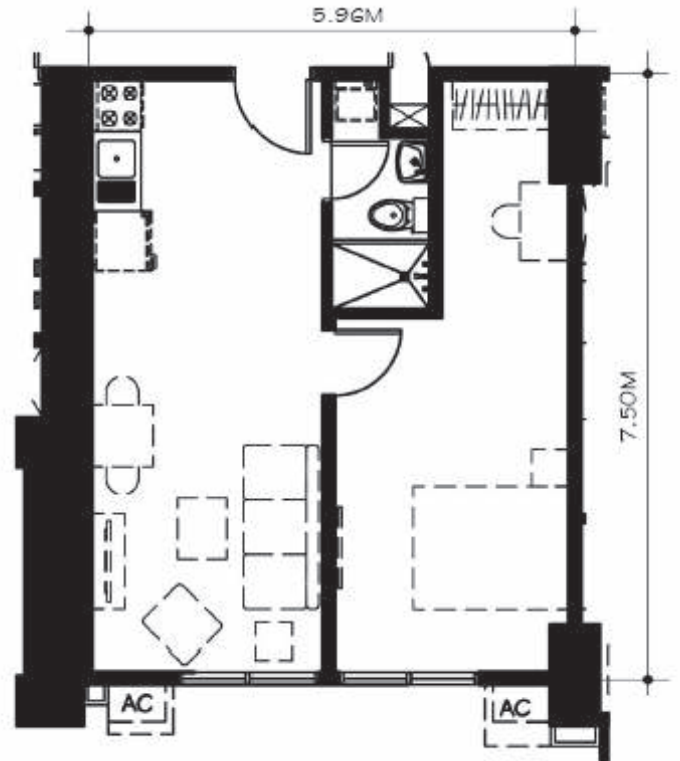
Unit R
22.73 SQM

TOWER FOUR – UNIT LAYOUTS

TYPICAL ONE BEDROOM UNITS

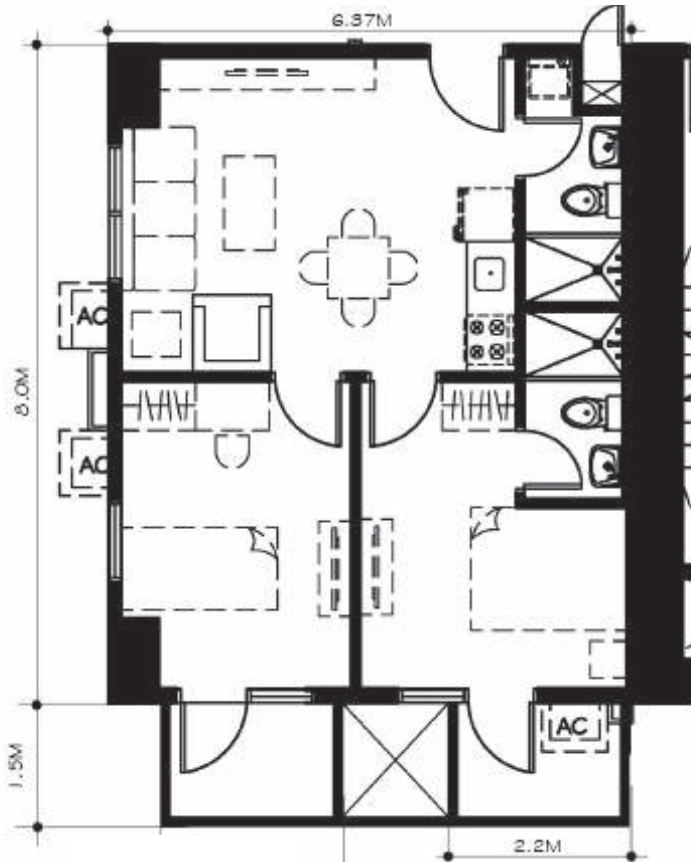


Unit E
44.70 SQM

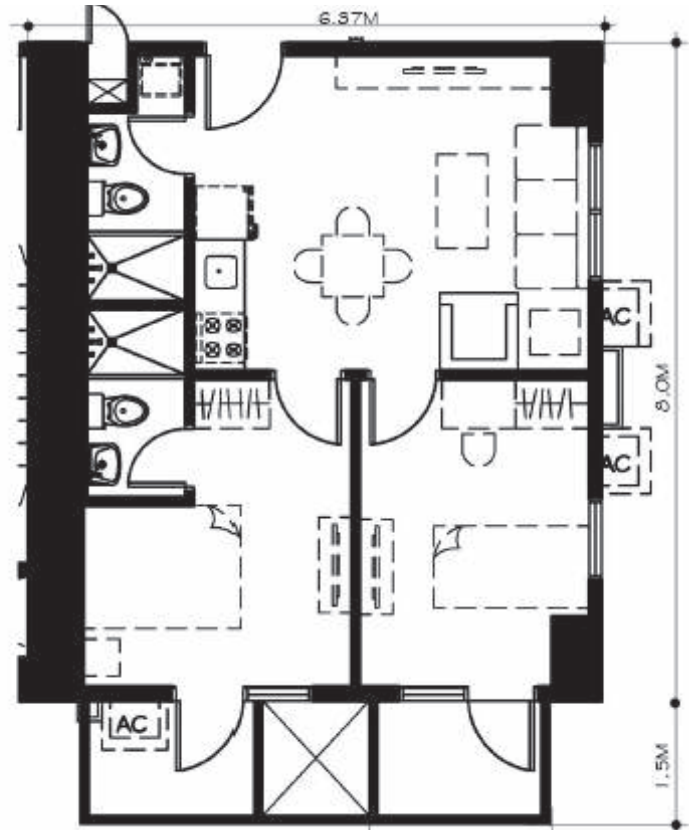


Unit D
44.70 SQM

TOWER FOUR – UNIT LAYOUTS TYPICAL TWO BEDROOM UNITS WITH BALCONY



Unit H
57.56 SQM



Unit A
57.56 SQM



Empire East

COMPUTATION SHEET

Kasara Urban Resort Residences
Tower 4

	Studio 22.72 sqm	1BR 27.60 sqm	2BR 57.56 sqm
Unit List Price	3,839,635.80	4,650,296.00	9,637,437.60
Selling Price	3,428,246.25	4,152,050.00	8,604,855.00
2% Less: Promo Discount	68,564.93	83,041.00	172,097.10
	3,359,681.33	4,069,009.00	8,432,757.90
5% Less: Additional Discount	167,984.07	203,450.45	421,637.90
	3,191,697.26	3,865,558.55	8,011,120.01
2.5% Less: 2BR Special Discount	-	-	200,278.00
	3,191,697.26	3,865,558.55	7,810,842.00
12% Add: VAT	-	463,867.03	1,011,930.95
Net Selling Price	3,191,697.26	4,329,425.58	8,822,772.95

TERMS OF PAYMENT

OPTION 1

20% of Net Selling Price	638,339.45	865,885.12	1,764,554.59
Less: Reservation Fee	25,000.00	25,000.00	25,000.00
	613,339.45	840,885.12	1,739,554.59
Monthly Amortization for Month 1-48	12,777.91	17,518.44	36,240.72
80% Balance Upon Turnover	2,553,357.81	3,463,540.46	7,058,218.36
7% Other Fees	239,977.24	290,643.50	602,339.85

Notes:

1. Empire East Land Holdings, Inc. reserves the right to correct error that may appear on above computation.
2. The Reservation Fee (25,000) is non-refundable in case of cancellation or withdrawal by the buyer.
3. All outstanding balances are due and demandable upon unit turn over.
4. All checks should be made payable to **Empire East Land Holdings, Inc.**
5. Prices and other details are subject to change without prior notice.
6. Other charges is computed at 7% of the Selling Price and shall be settled separately thru Empire East's Credit and Collection Department.

Presented by

Acknowledged by

Signature over Printed Name
Real Estate Broker

Signature over Printed Name
Client