





TOWER PERSPECTIVE



These renderings are based on the architect's perspective and do not form part of an offer or contract. Selling price is established principally on a per unit basis and not on the unit measurement or dimension. Empire East reserves the right to modify these illustrations without prior notice. Clients are invited to verify subsequent changes. As of June 2013. For reference and presentation purposes only.

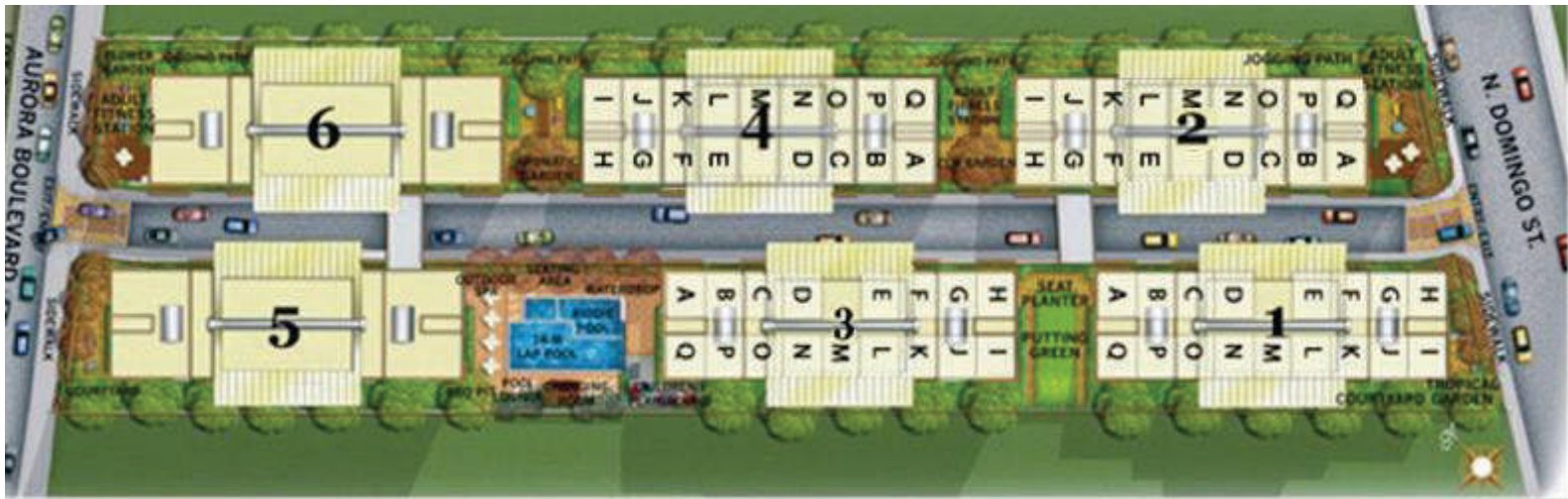


LOCATION MAP





SITE DEVELOPMENT PLAN



These renderings are based on the architect's perspective and do not form part of an offer or contract. Selling price is established principally on a per unit basis and not on the unit measurement or dimension. Empire East reserves the right to modify these illustrations without prior notice. Clients are invited to verify subsequent changes. As of June 2013. For reference and presentation purposes only.



TOWER TWO, THREE and FOUR

2BR 30 sqm 2BR 30 sqm 2BR 30 sqm 2BR 30 sqm 2BR 30 sqm 2BR 30 sqm 2BR 30 sqm 2BR 30 sqm



2BR 30 sqm 2BR 30 sqm 2BR 30 sqm 2BR 30 sqm 2BR 30 sqm 2BR 30 sqm 2BR 30 sqm 2BR 30 sqm 2BR 30 sqm

TYPICAL FLOOR PLAN
2nd to 24th LEVEL (Tower Two)
2nd to 20th LEVEL (Tower Three)
2nd to 18th LEVEL (Tower Four)

These renderings are based on the architect's perspective and do not form part of an offer or contract. Selling price is established principally on a per unit basis and not on the unit measurement or dimension. Empire East reserves the right to modify these illustrations without prior notice. Clients are invited to verify subsequent changes. As of June 2013. For reference and presentation purposes only.



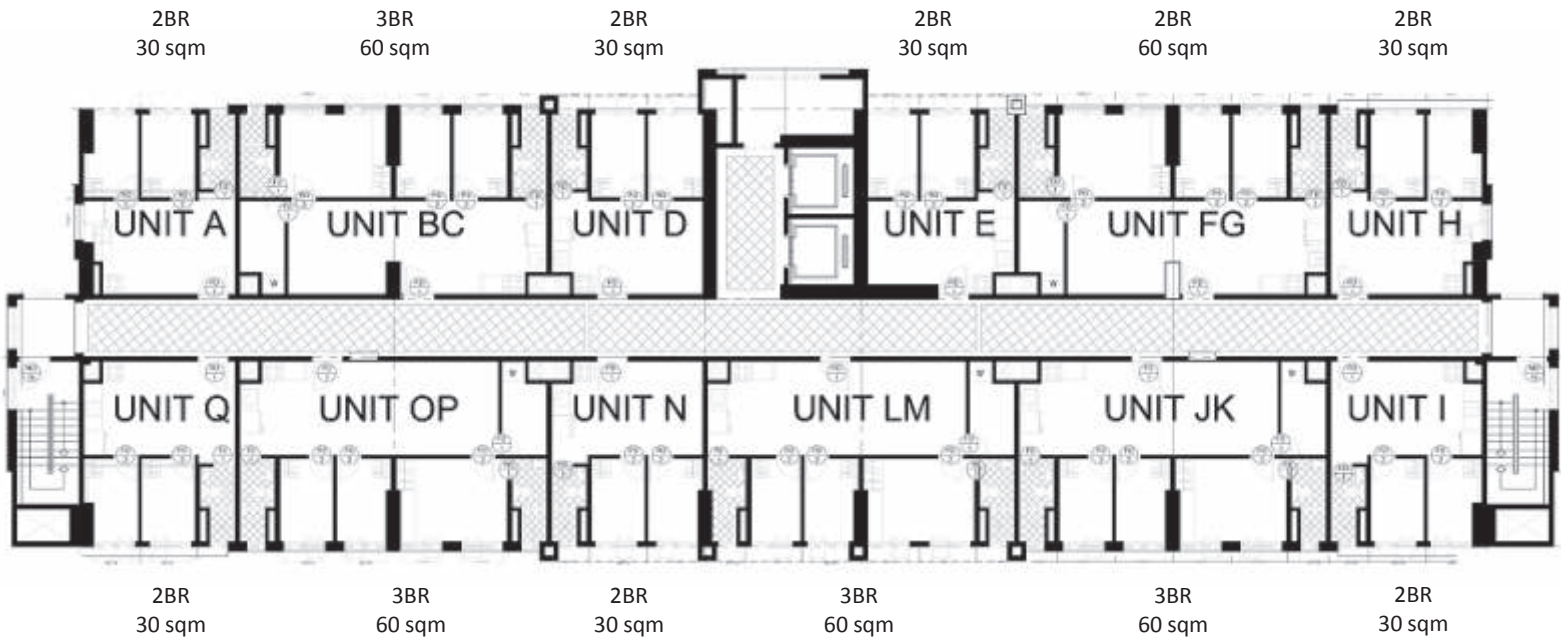
TOWER ONE, TWO, THREE and FOUR – UNIT LAYOUT TYPICAL TWO BEDROOM UNIT



INNER UNIT – 30 SQ.M.



TOWER ONE

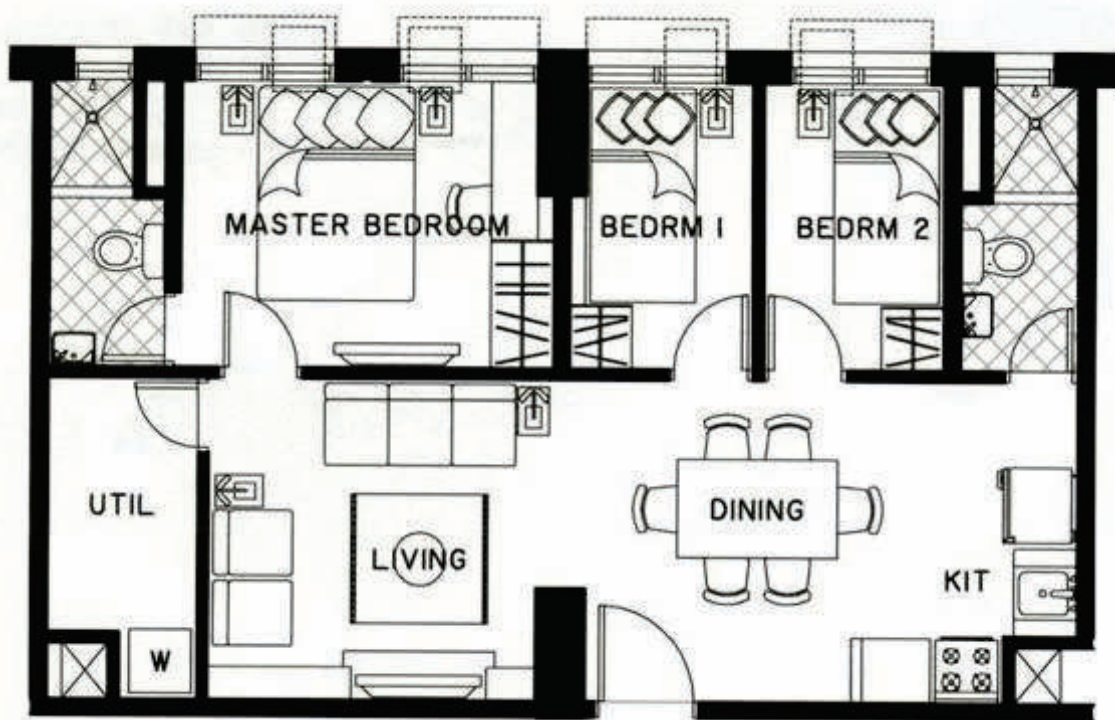


TYPICAL FLOOR PLAN 2nd to 15th LEVEL

These renderings are based on the architect's perspective and do not form part of an offer or contract. Selling price is established principally on a per unit basis and not on the unit measurement or dimension. Empire East reserves the right to modify these illustrations without prior notice. Clients are invited to verify subsequent changes. As of June 2013. For reference and presentation purposes only.



TOWER ONE – UNIT LAYOUT TYPICAL THREE BEDROOM UNIT



COMBINED UNIT – 60 SQ.M.



COMPUTATION SHEET

Little Baguio Terraces

	2BR 30 sqm	3 BR Combined 60 sqm
Unit List Price	4,705,400.00	9,410,800.00
Selling Price	4,201,250.00	8,402,500.00
5% Less: Promo Discount	210,062.50	420,125.00
	<u>3,991,187.50</u>	<u>7,982,375.00</u>
5% Less: Additional Discount	199,559.38	399,118.75
	<u>3,791,628.13</u>	<u>7,583,256.25</u>
2.5% Less: 2BR Special Discount	94,790.70	189,581.41
	<u>3,696,837.42</u>	<u>7,393,674.84</u>
12% Add: VAT	443,620.49	957,885.00
Net Selling Price	<u>4,140,457.91</u>	<u>8,351,559.84</u>

TERMS OF PAYMENT

OPTION 1

2.50% Outright Downpayment	103,511.45	208,789.00
10% of Net Selling Price	414,045.79	835,155.98
Monthly Amortization for 24 months	17,251.91	34,798.17
7.50% of Net Selling Price	310,534.34	626,366.99
Less: Reservation Fee	25,000.00	50,000.00
	<u>285,534.34</u>	<u>576,366.99</u>
Lumpsum Payment for Month 12, 18 and 24	95,178.11	192,122.33
80% Balance on Month 25	3,312,366.33	6,681,247.88
7% Other Fees	294,087.50	658,756.00

Notes:

1. Empire East Land Holdings, Inc. reserves the right to correct error that may appear on above computation.
2. The Reservation Fee (25,000) is non-refundable in case of cancellation or withdrawal by the buyer.
3. All outstanding balances are due and demandable upon unit turn over.
4. All checks should be made payable to **Empire East Land Holdings, Inc.**
5. Prices and other details are subject to change without prior notice.
6. Other charges is computed at 7% of the Selling Price and shall be settled separately thru Empire East's Credit and Collection Department.

Presented by

Signature over Printed Name
Real Estate Broker

Signature over Printed Name
Client