

THE
RISE
MAKATI

THE *grand* ADVENTURE

Life isn't always about where you work, or the kind of clothes you wear. Nor is it just about the wheels you drive, or the expectations you strive to meet. It's about something else entirely.

We think it's about the family you cherish, and the friends you make along the way. It's about doing what you want, when you want. It's about the freedom to decide for yourself. It's not about what you have, but what you can achieve. We think it's about the moments where you step back and realise life's a grand adventure.

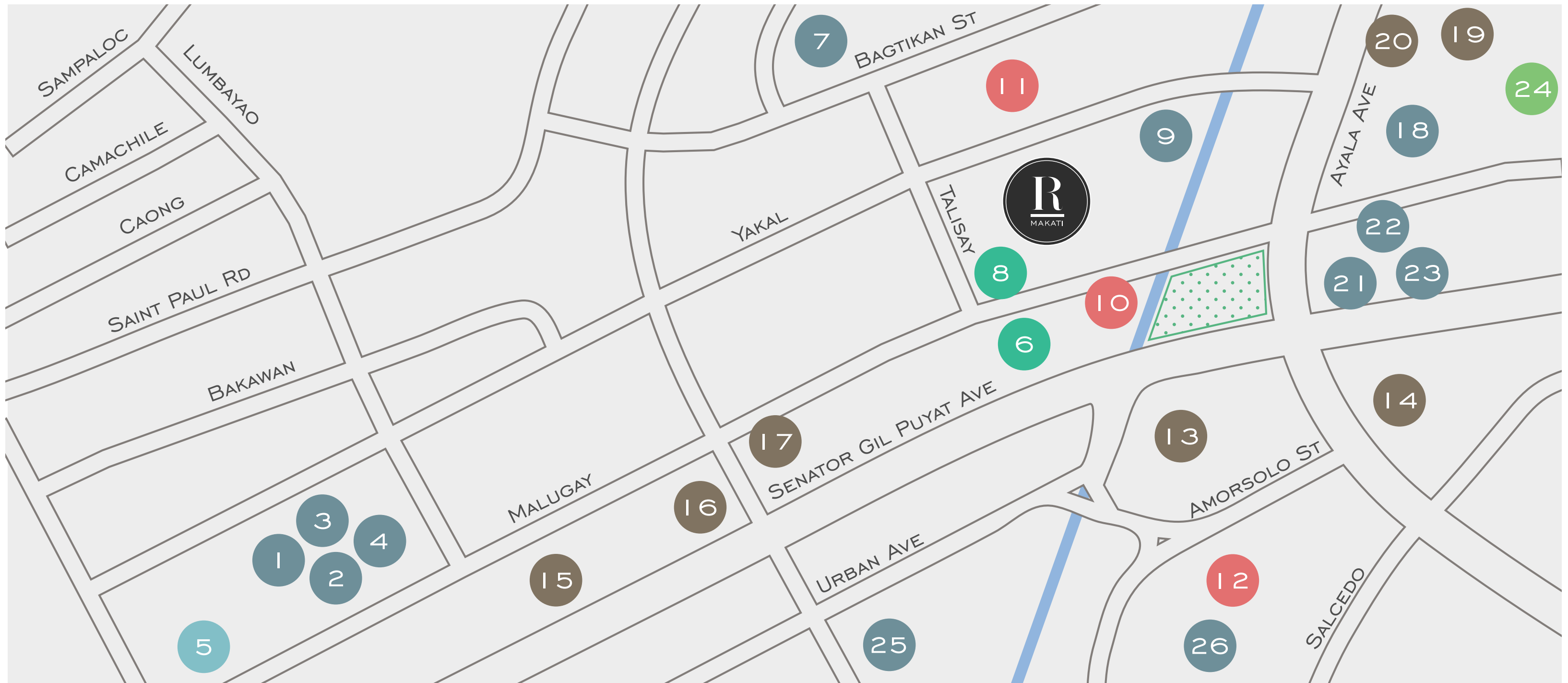
The Rise is your canvas, and we invite you to create your masterpiece.



A group of four people, two men and two women, are shown in profile, smiling and talking to each other. They are outdoors, and the scene is bathed in bright, warm sunlight, creating a lens flare effect. The people are dressed in casual, colorful clothing. The overall mood is joyful and communal.

PASSIONATE
community
AT HEART

Love what you do? So do we. The Rise is an active and thriving art, music, and creative community for like-minded people to come together and inspire each other, and to follow their passions.



WHAT'S *around* NOMA?

The Rise is situated at the heart of NOMA, or North Makati - the burgeoning art, design, and culinary district just north of Ayala Avenue. The area is known for its unique mix of galleries, delicatessens, indie music venues, and one-of-a-kind retail experiences - all of which is only a stones throw from The Rise.

What better place to experience this thriving and ever-changing community of artists, chefs, and creatives than at The Rise!

- | | | |
|---|---|--|
| <ul style="list-style-type: none"> 1. Carpaccio Ristorante Italiano 2. Chesa Bianca Swiss Restaurant 3. I'm Angus Steak House 4. Santis Delicatessen 5. The Collective 6. Skyland Plaza Condominium 7. The National Shrine of the Sacred Heart 8. Tiara Hotel 9. Makati Fire Station 10. Makati Central Post Office | <ul style="list-style-type: none"> 11. Makati Central Police Headquarters 12. Makati Medical Center 13. People Support 14. RCBC Plaza 15. Petron Gas Station 16. Caltex Gas Station 17. Bank of the Philippine Islands 18. Rustan's Supermarket 19. National Bookstore 20. Handyman | <ul style="list-style-type: none"> 21. New Bombay 22. Starbucks 23. Earle's Delicatessen 24. Makati Golf Club Driving Range 25. Petra and Pilar Restaurant 26. Stockton Place by Chef Celine |
|---|---|--|

 Parks & Gardens

NUMBERS *around* THE RISE

 **78** NUMBER OF RESTAURANTS, CAFES & TAKE OUT

 **16** NUMBER OF ART GALLERIES & STUDIOS

 **05** NUMBER OF GAS STATIONS

 **25** NUMBER OF BARS

 **57** NUMBER OF SCHOOLS, INSTITUTIONS & EDUCATION CENTERS

 **67** NUMBER OF BANKS & ATMS

WHAT'S *around* THE RISE

 **10** MINUTES
RIDE TO GREENBELT CENTER

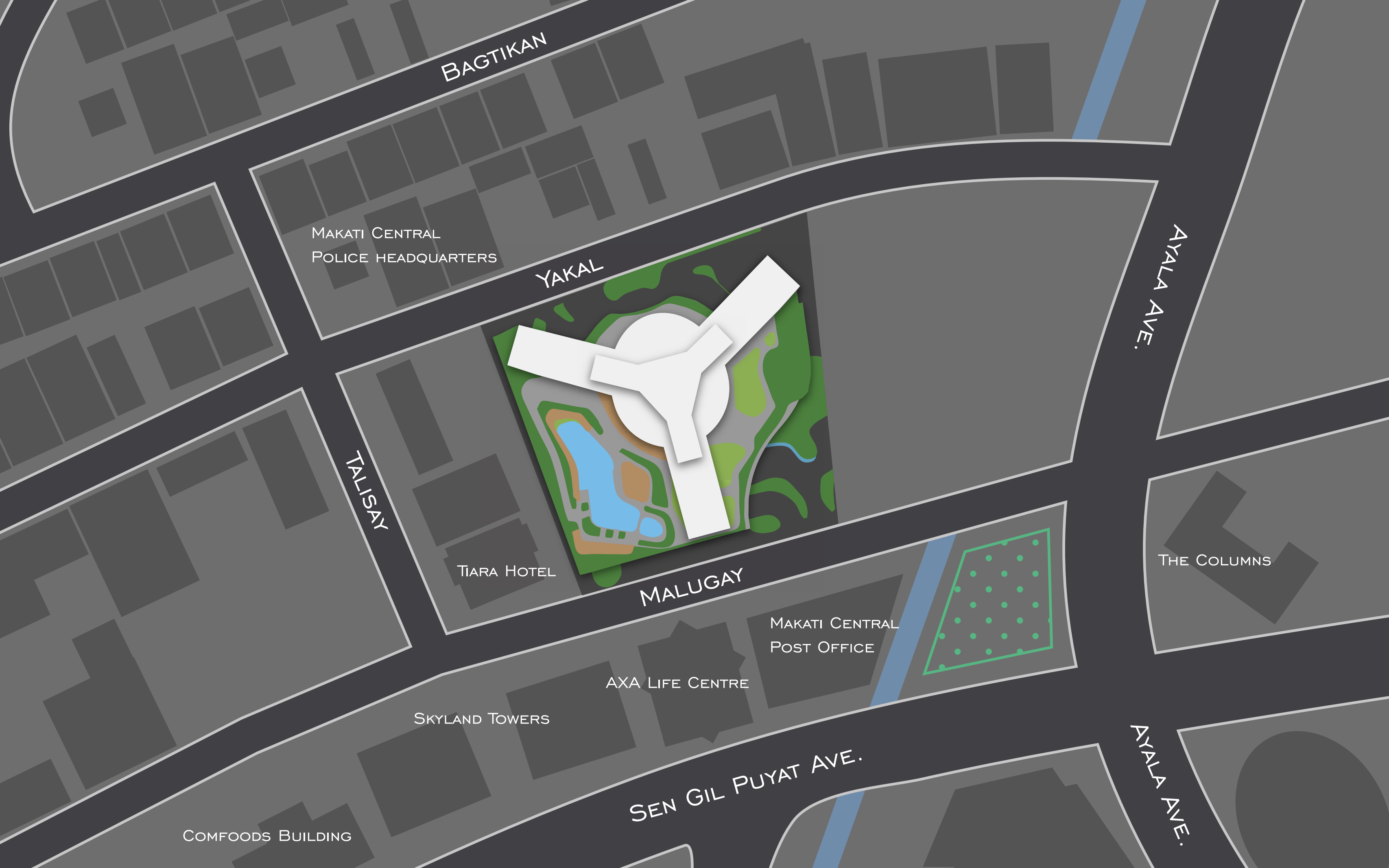
 **5** MINUTES
WALK TO MAKATI MEDICAL CENTER

 **5.9** KM
RIDE TO NAIA TERMINAL 1

 **15** MINUTES
RIDE TO BONIFACIO GLOBAL CITY

 **5** MINUTES
RIDE TO THE CHURCH

 **10** MINUTES
RIDE TO AYALA TRIANGLE



BAGTIKAN

MAKATI CENTRAL
POLICE HEADQUARTERS

YAKAL

AYALA AVE.

TALISAY

TIARA HOTEL

MALUGAY

THE COLUMNS

MAKATI CENTRAL
POST OFFICE

AXA LIFE CENTRE

SKYLAND TOWERS

AYALA AVE.

SEN GIL PUYAT AVE.

COMFOODS BUILDING

WHAT'S *inside* THE RISE



55

UNITS PER FLOOR SPLIT INTO 3 WINGS



2 FLOORS

OF STATE OF THE ART GYM



280 SQM

OF CHILDRENS PLAYZONE



17-21

UNITS PER WING



380M

DISTANCE OF PRIVATE JOGGING PATH



1000 SQM

OF SPACE FOR BBQ



18

NUMBER OF PASSENGER LIFTS



28M

TROPICAL SWIMMING POOL



1620 SQM

AREA OF GREEN SPACES



744

NUMBER OF RESIDENTS PARKING SPOTS



7647 SQM

OF AMENITIES SPACES



51

NUMBER OF RESTAURANTS & SHOPS



24HR CCTV



NON-SMOKING
LOUNGE AREAS



INTERCOM



CENTRAL MAILBOX



RECEPTION
SERVICES



ELEVATOR PASS CARD



SPACES AT THE RISE
a new amenities concept



KARAOKE ROOMS



SWIMMING POOL



SAUNA



CENTRALIZED GARBAGE
DISPOSAL



FUNCTION ROOMS

YOUR WORLD

your

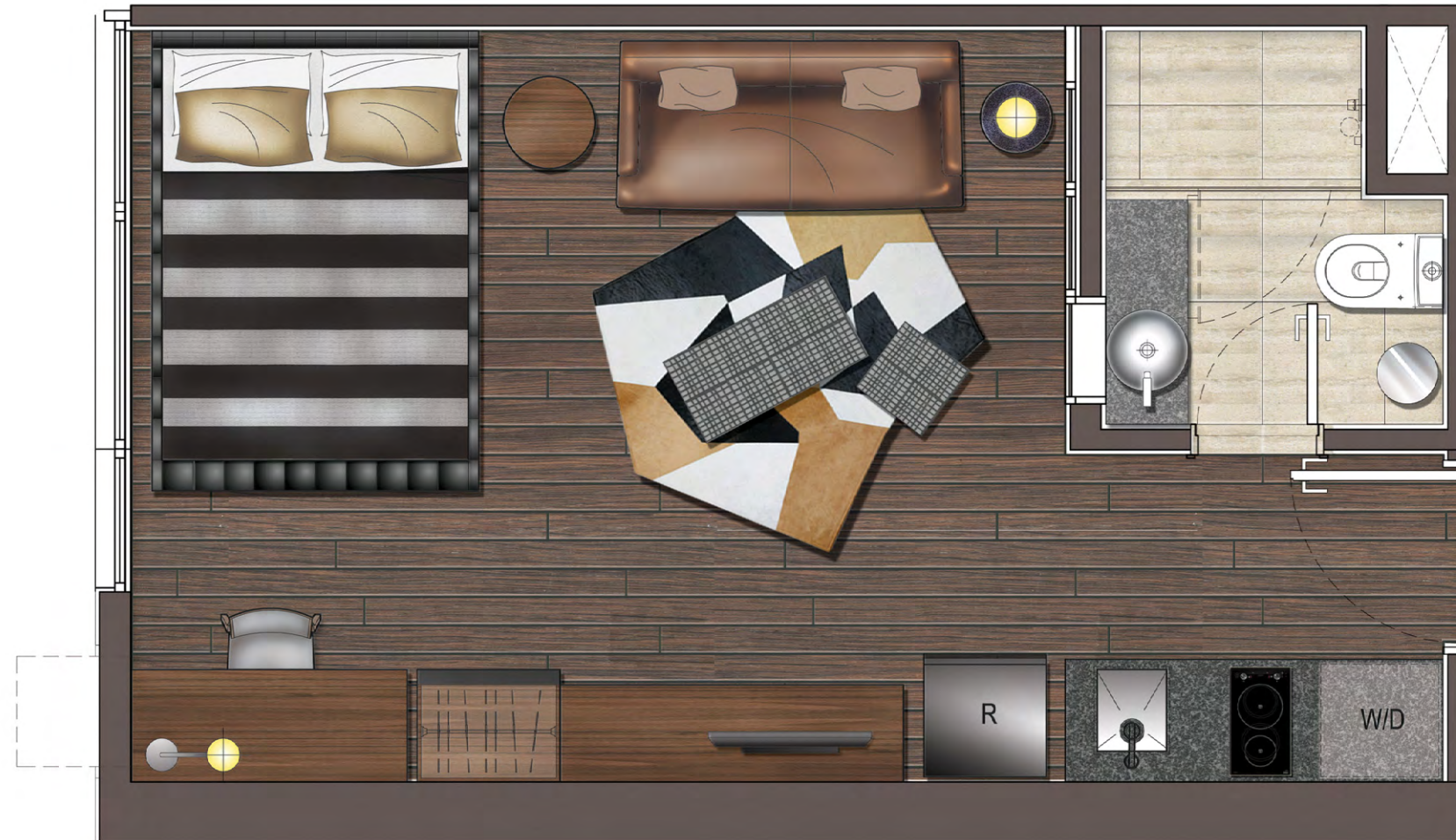
RULES

You're active, you're passionate, and you live life to the fullest. Your home is your base from where you plan your days (and your nights); where you unwind after your adventures.

Your home is yours to create. The possibilities are endless.







ONE-BEDROOM UNIT (WITHOUT BALCONY)

Unit D - 27.17 sqm

**This layout shows a converted unit for illustration purposes only.*

A woman with dark hair and glasses, wearing a light-colored cardigan over a red and white striped top, is sitting on a light-colored sofa. She is smiling and looking at a laptop screen. In front of her are several sheets of paper, and she appears to be reviewing them. The background shows a large window with a view of greenery outside.

BUILD *your* DREAM HOME

Whether you're a career-oriented professional, an aspiring artist / entrepreneur, or a busy urban couple - our one-bedroom apartments are lofty, airy, and designed to give you (and your partner!) the perfect space to build your dream home.



THE ONE BEDROOM

Our one-bedroom apartments are ideal for one, but are also ample enough for two - and you'll still have plenty of space for storage.



*Artist's image for illustration purposes only.



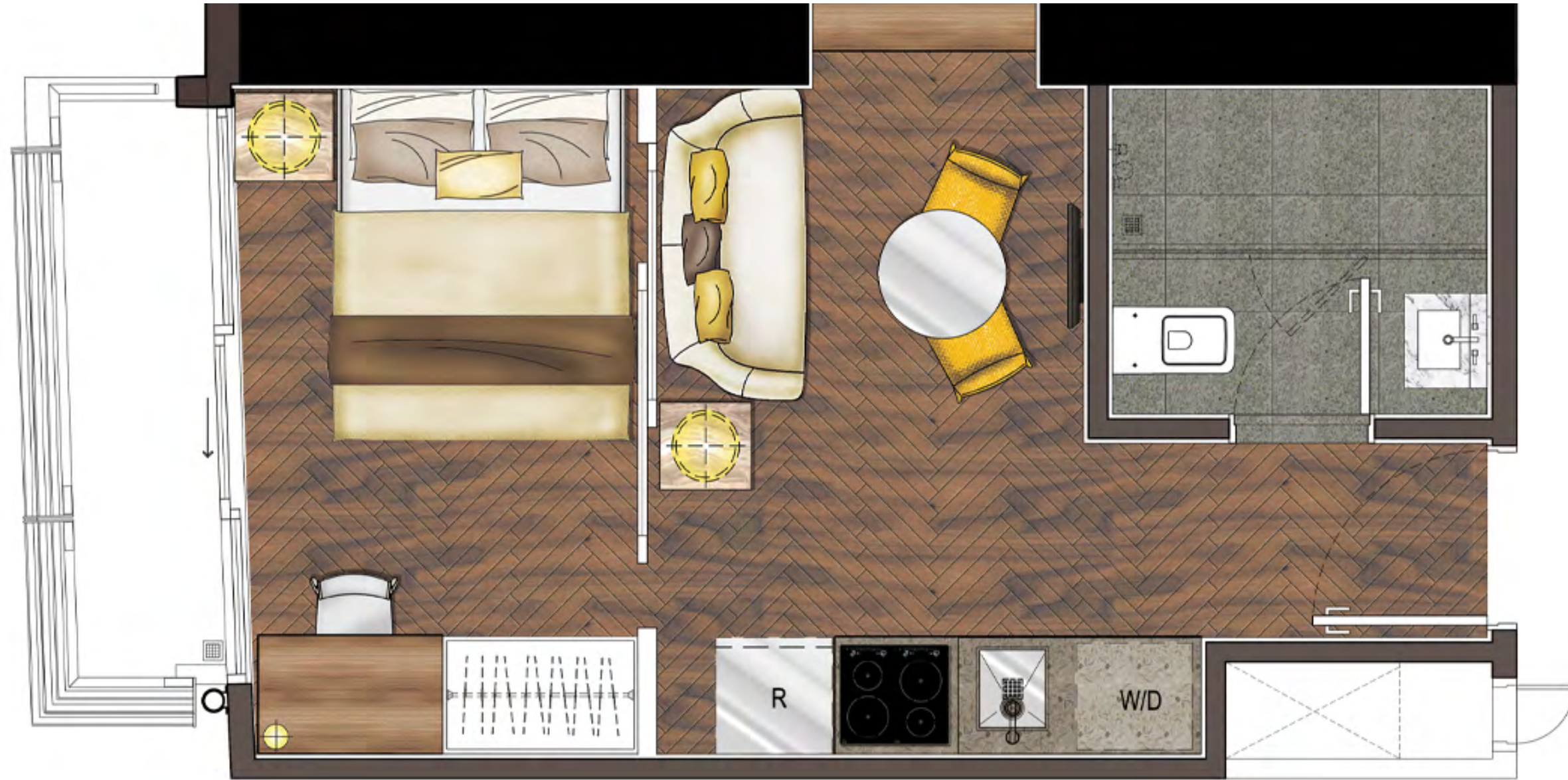
EAST WING ONE-BEDROOM UNIT (WITH BALCONY)

Unit G - 31.64 sqm inclusive of 4.97 sqm Balcony



ONE-BEDROOM UNIT

Unit G - 33.60 sqm



ONE-BEDROOM UNIT (WITH BALCONY)

Unit F - 27.51 - 28.59 sqm inclusive of 3.09 sqm Balcony



ONE-BEDROOM UNIT (WITH BALCONY)

Unit C - 29.21 sqm inclusive of 1.20 sqm Balcony



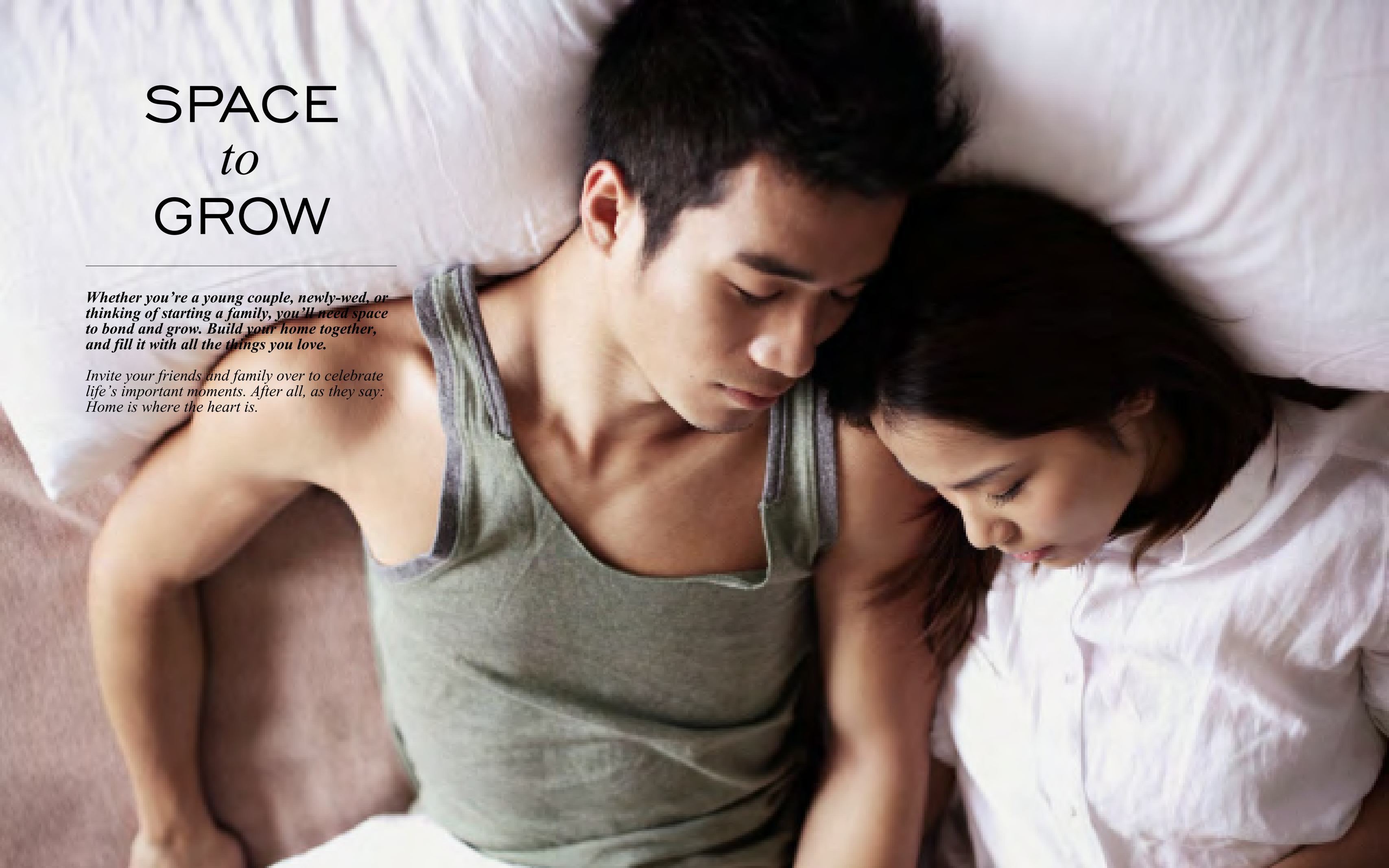
ONE-BEDROOM UNIT (WITH BALCONY)

Unit C - 29.21 sqm inclusive of 1.20 sqm Balcony

SPACE *to* GROW

Whether you're a young couple, newly-wed, or thinking of starting a family, you'll need space to bond and grow. Build your home together, and fill it with all the things you love.

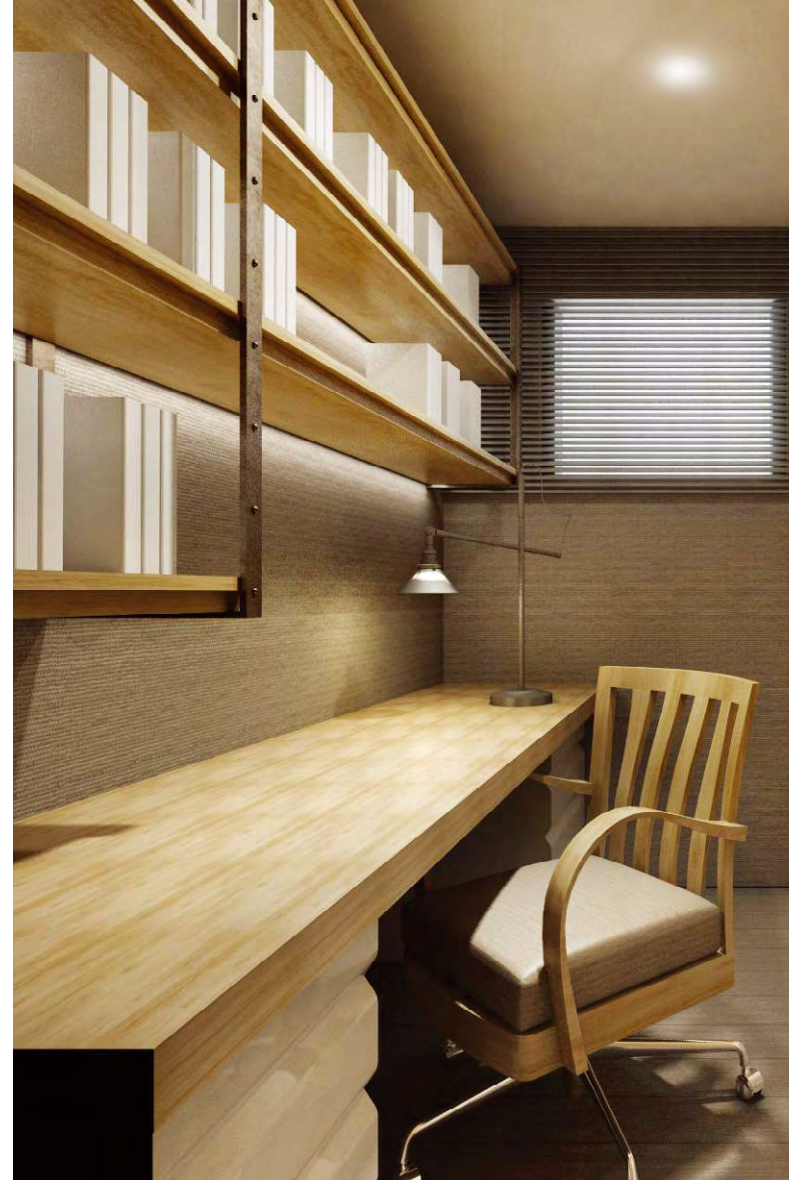
Invite your friends and family over to celebrate life's important moments. After all, as they say: Home is where the heart is.



THE COUPLE

Return to your sanctuary after a day at the office - our two bedroom units are sized for spaciousness and comfort, perfect for young couples and small families.





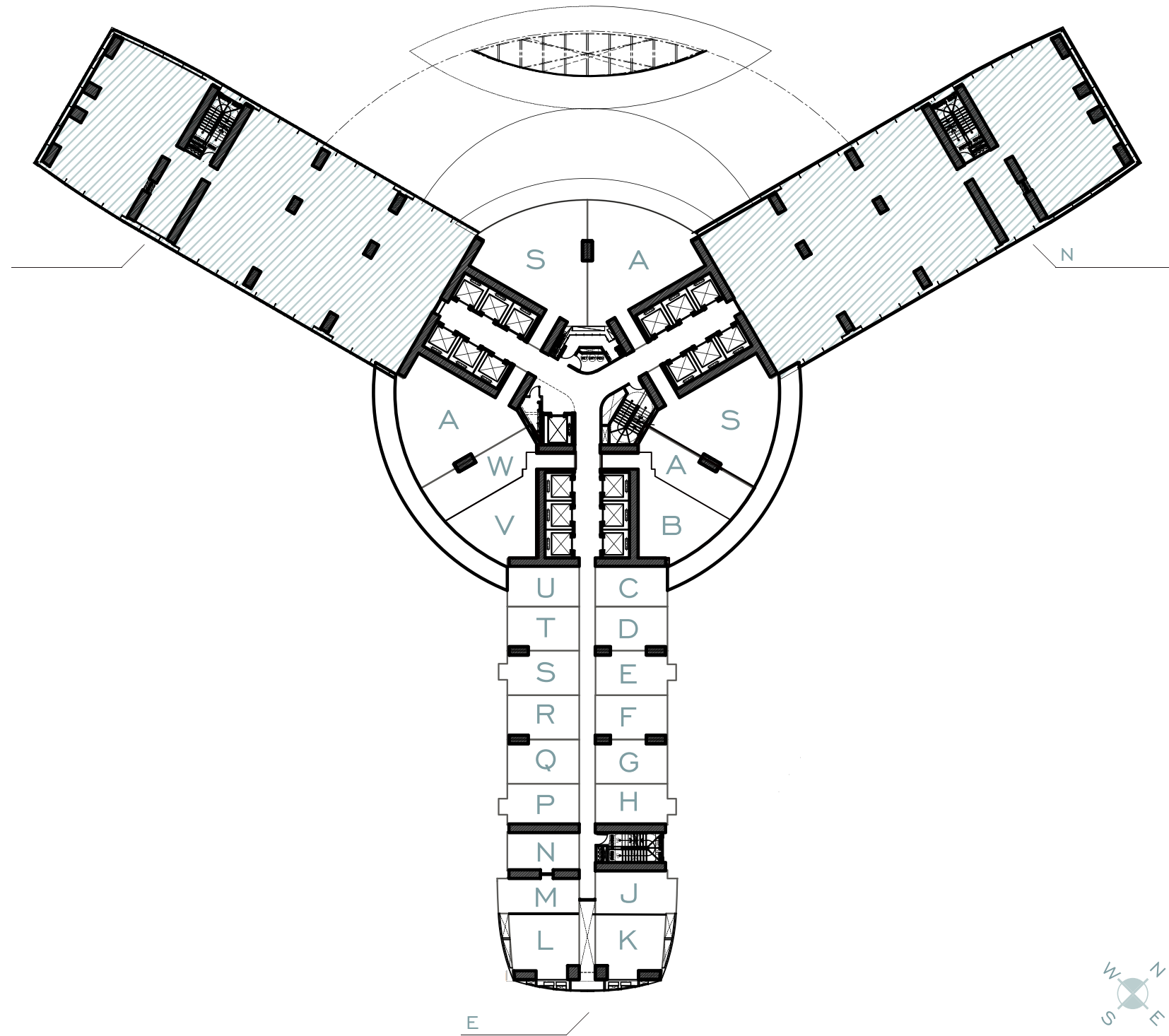


TWO-BEDROOM CORNER UNIT (WITH BALCONY)

Unit F - 73.56 sqm

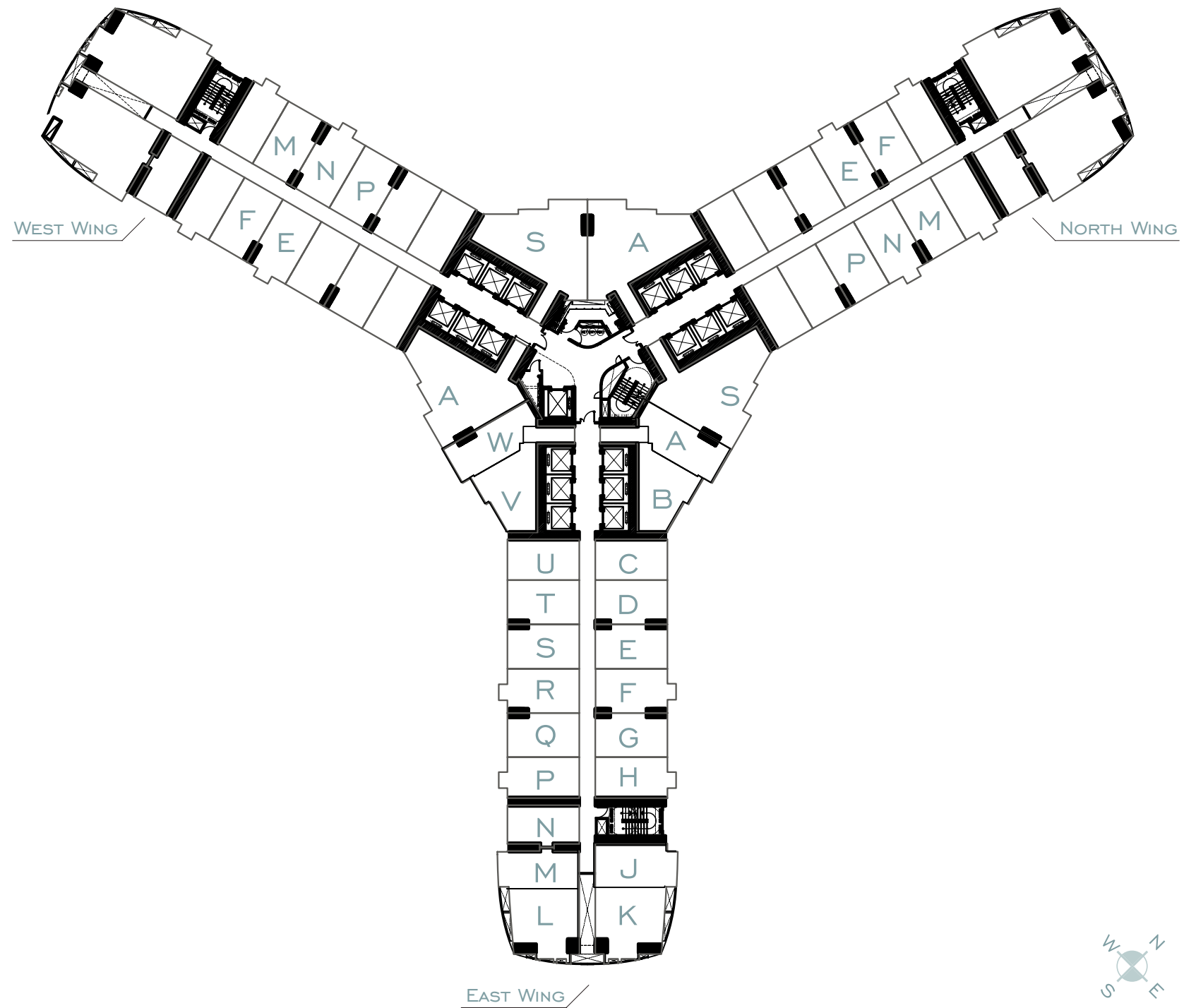
MASTER FLOOR-PLAN

5th floor



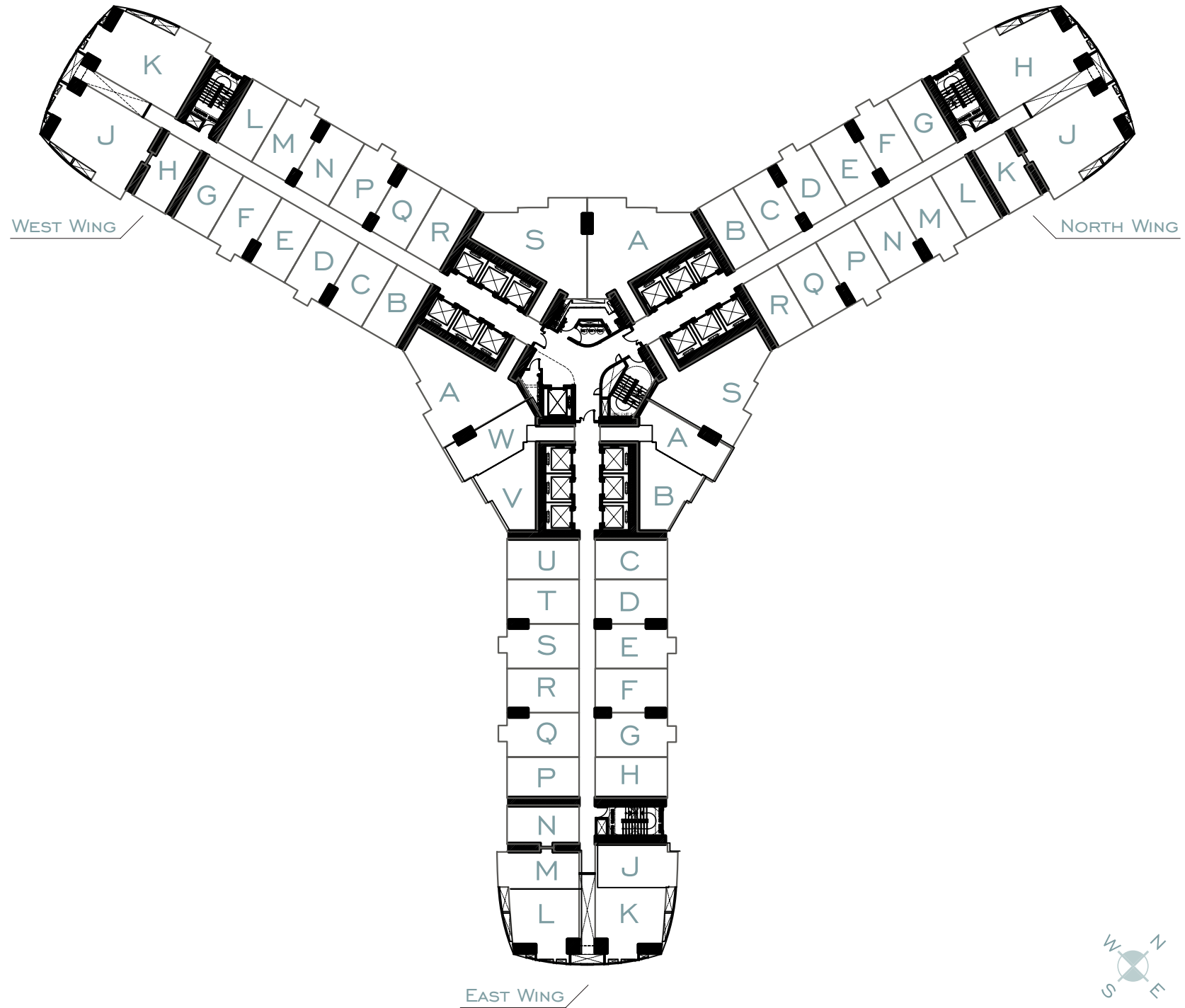
MASTER F LOOR-PLAN

6th, 10th, 15th, 18th and 21st floors



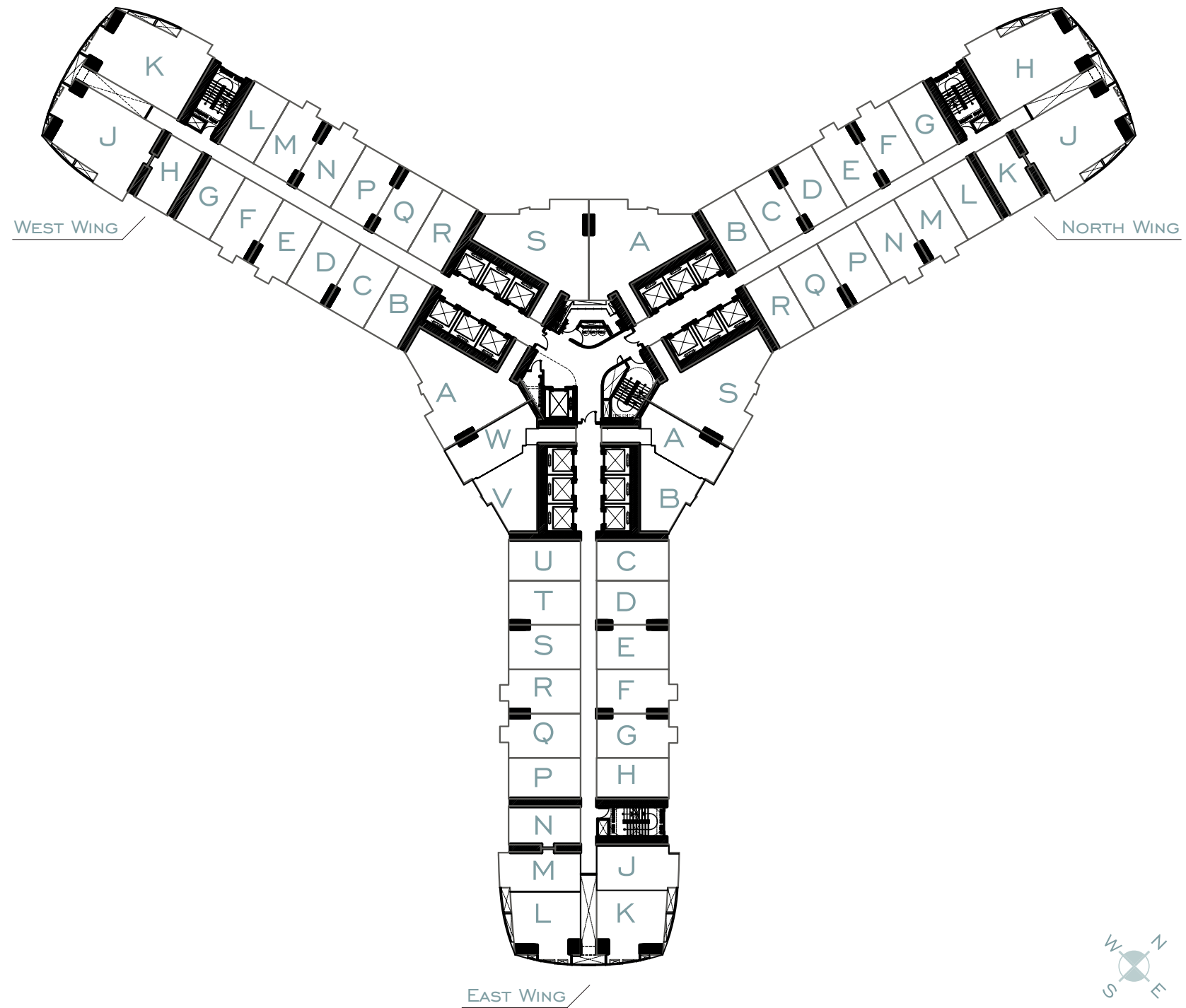
MASTER F LOOR-PLAN

7th, 11th, 17th, 20th and 22nd floors



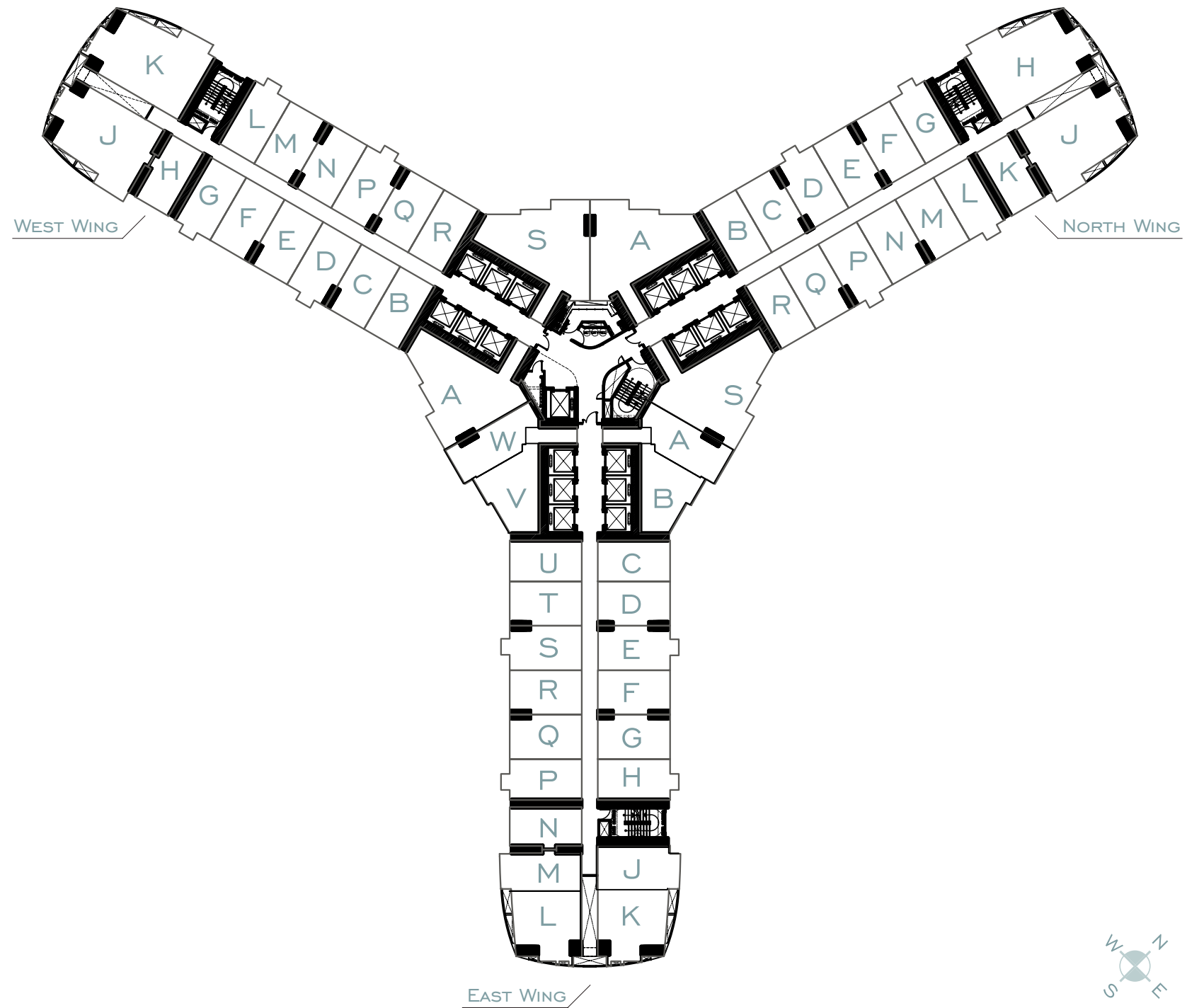
MASTER F LOOR-PLAN

8th and 14th floors



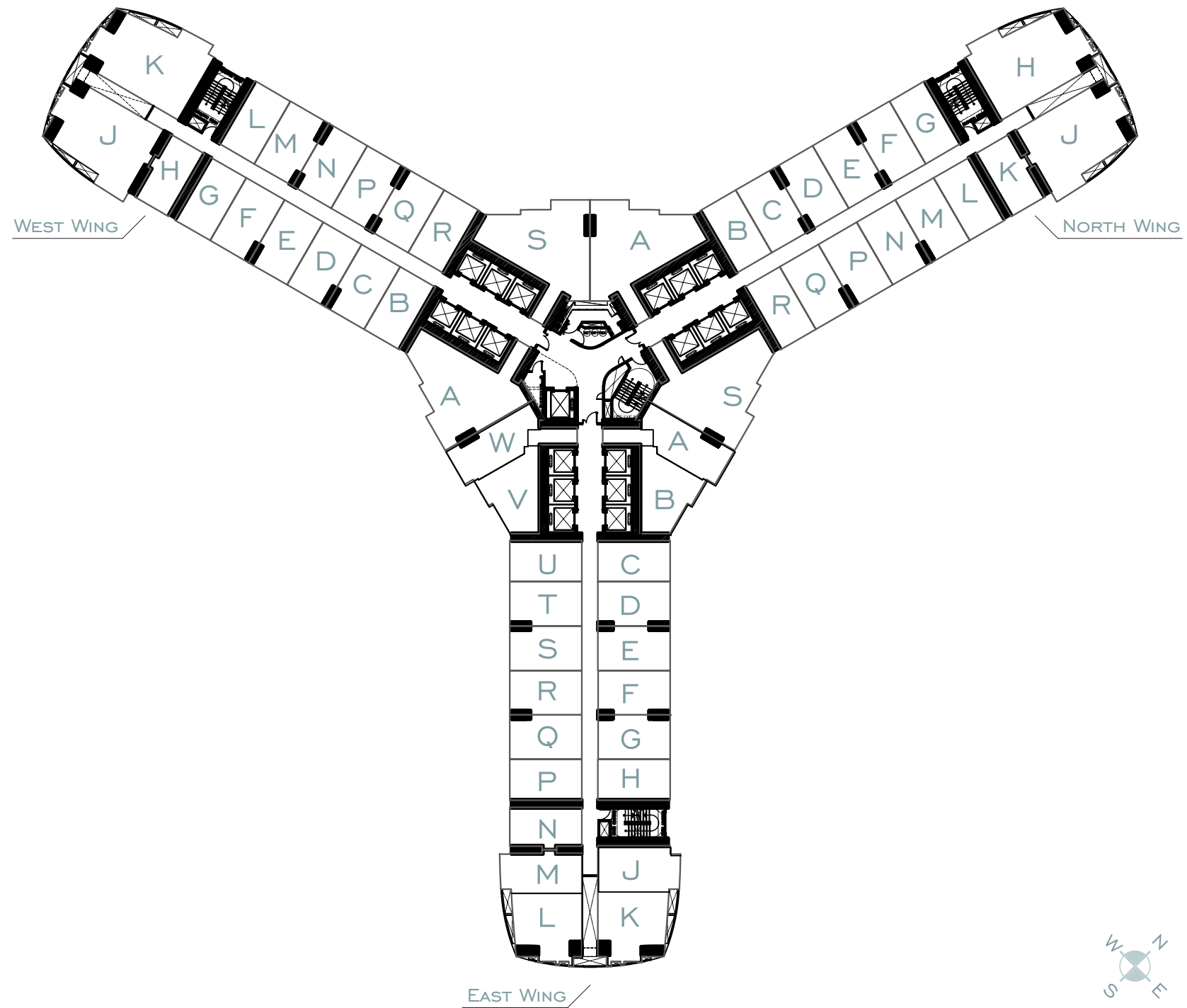
MASTER F LOOR-PLAN

9th, 12th, 16th and 19th floors



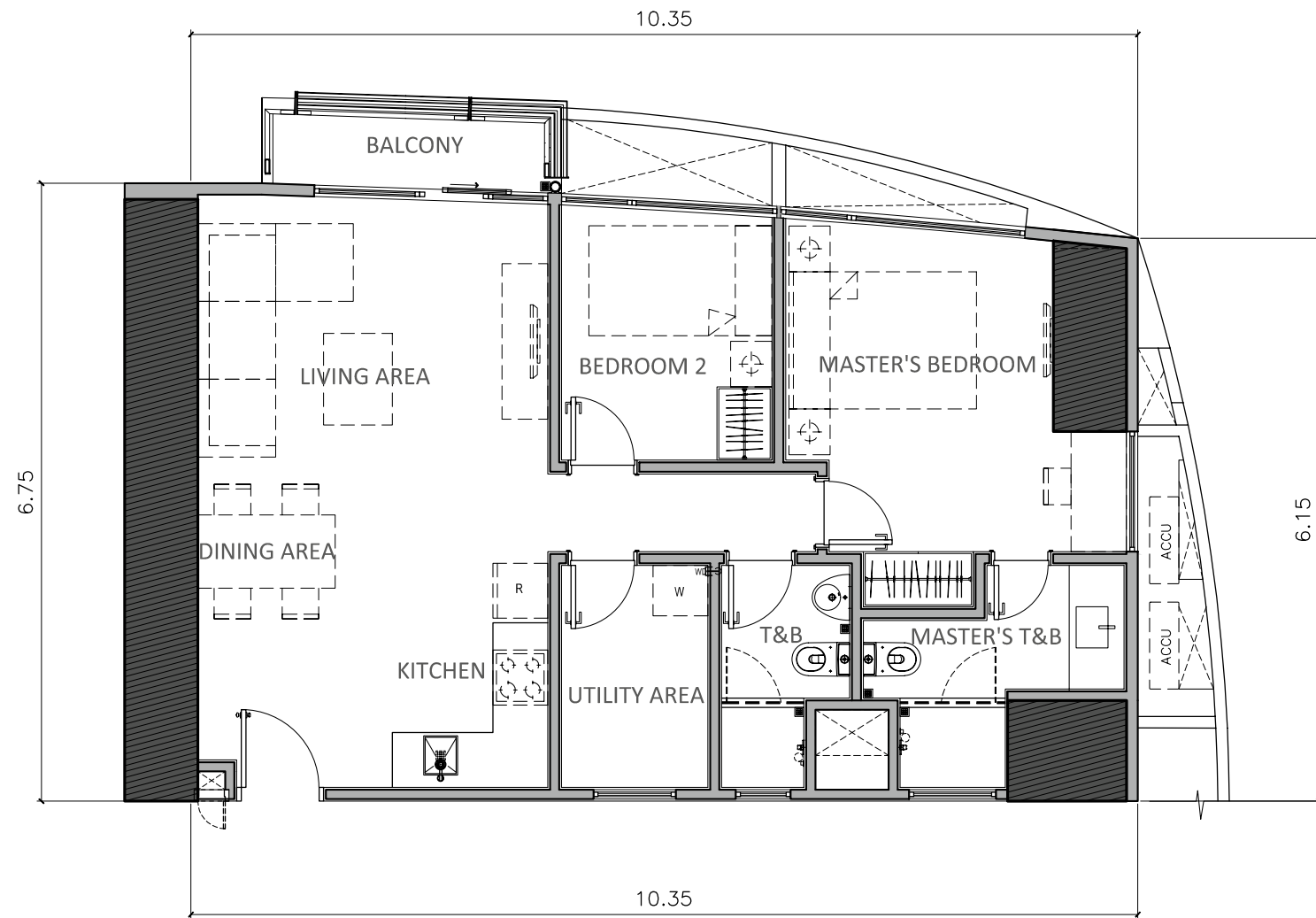
MASTER F LOOR-PLAN

23rd - 63rd floors

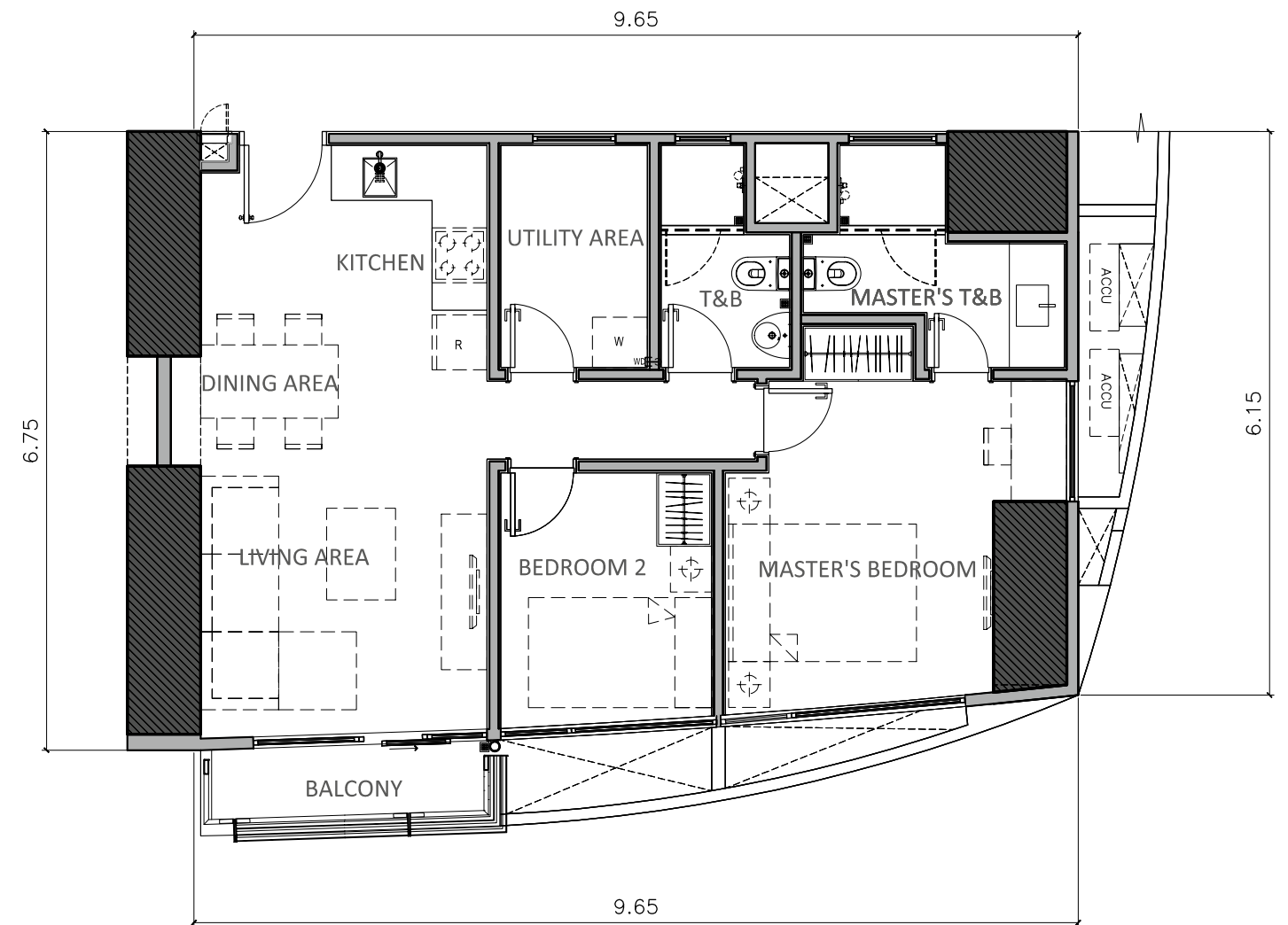


TWO BEDROOM CORNER UNIT WITH BALCONY

5th - 63rd floors



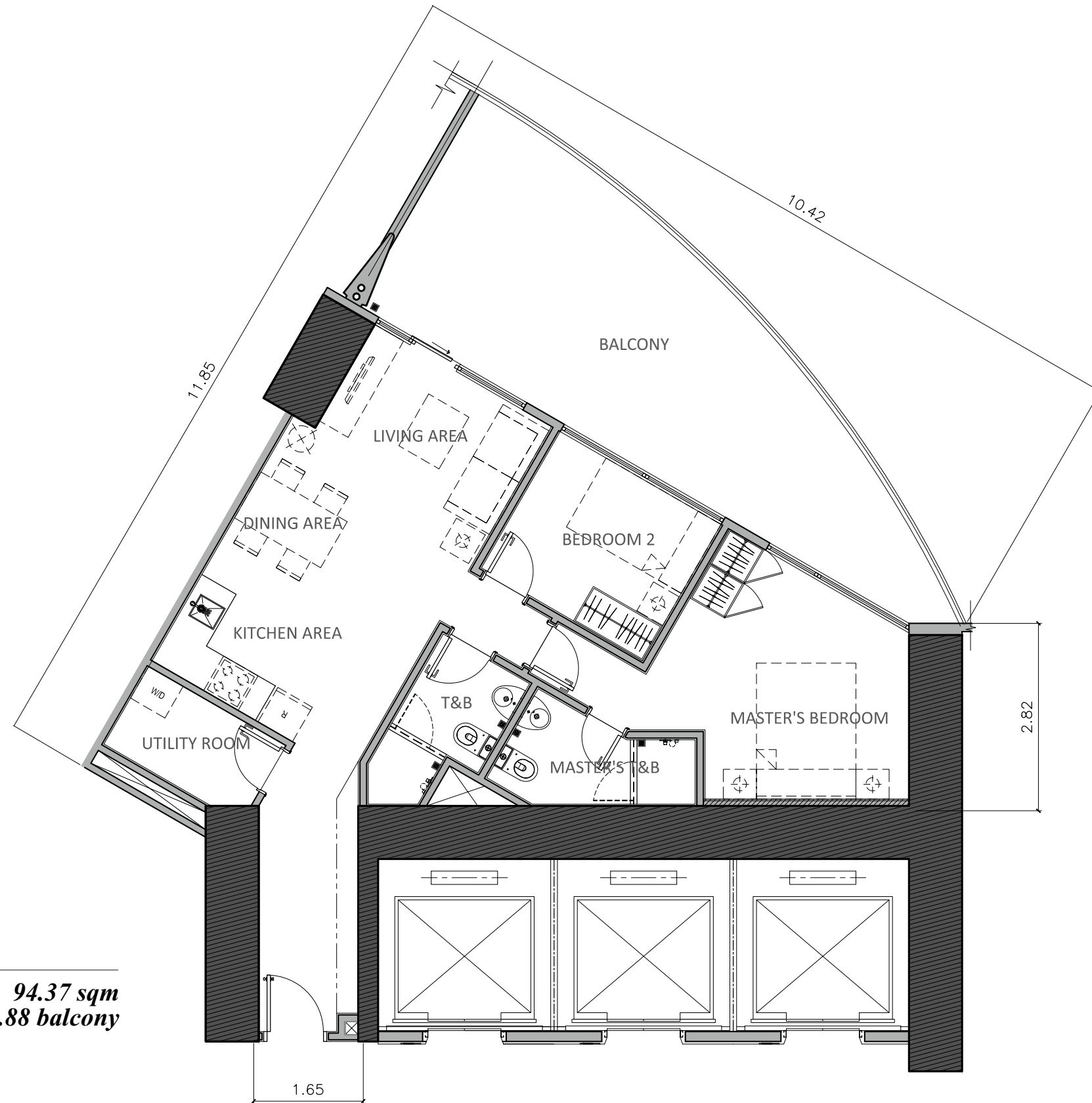
72.21 - 73.56 sqm
Inclusive of 3.09 sqm balcony



67.92 - 69.00 sqm
Inclusive of 3.09 sqm balcony

PREMIUM TWO BEDROOM UNIT WITH TERRACE

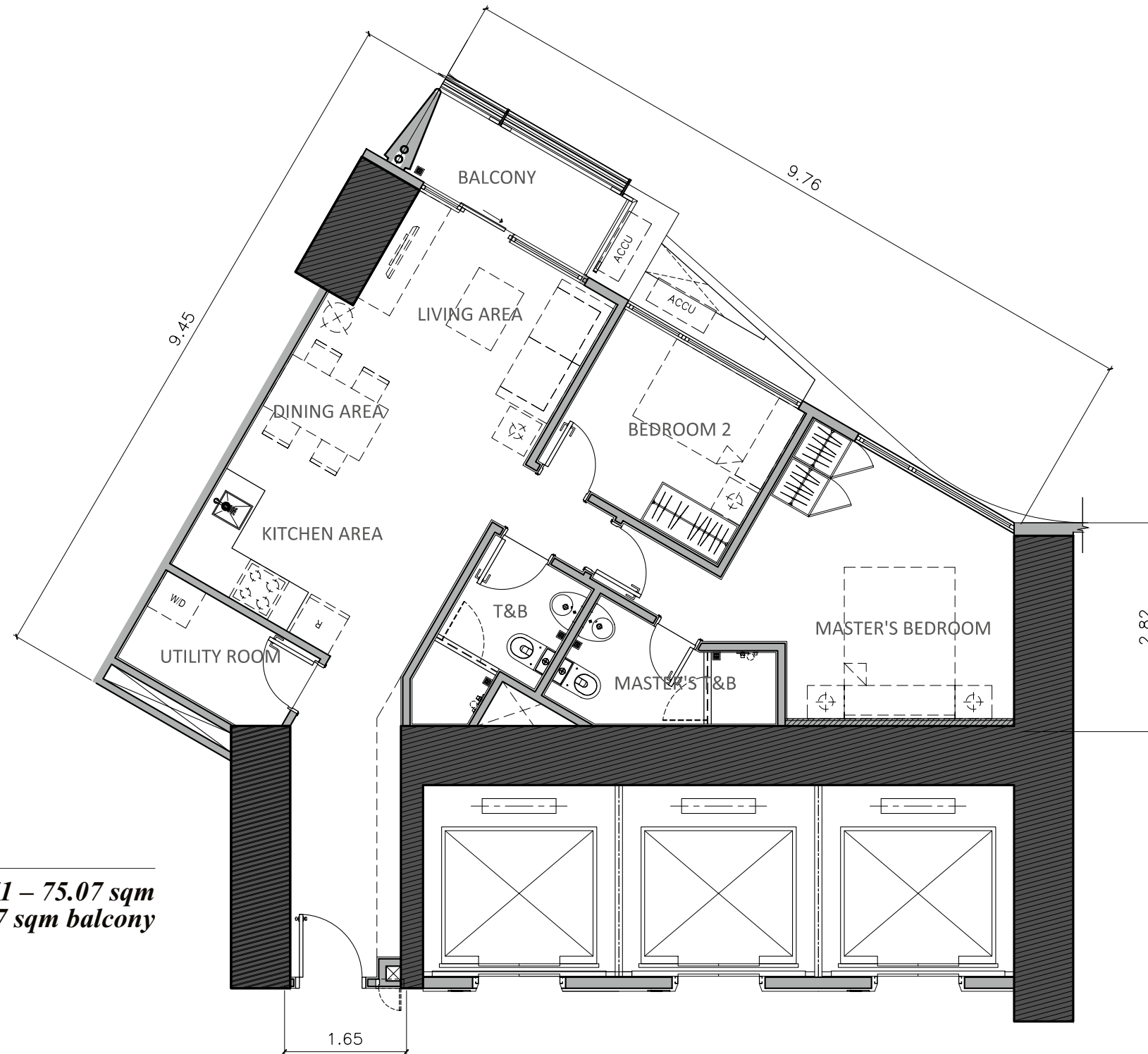
5th floor



94.37 sqm
Inclusive of 27.88 balcony

TWO BEDROOM CORE UNIT WITH BALCONY

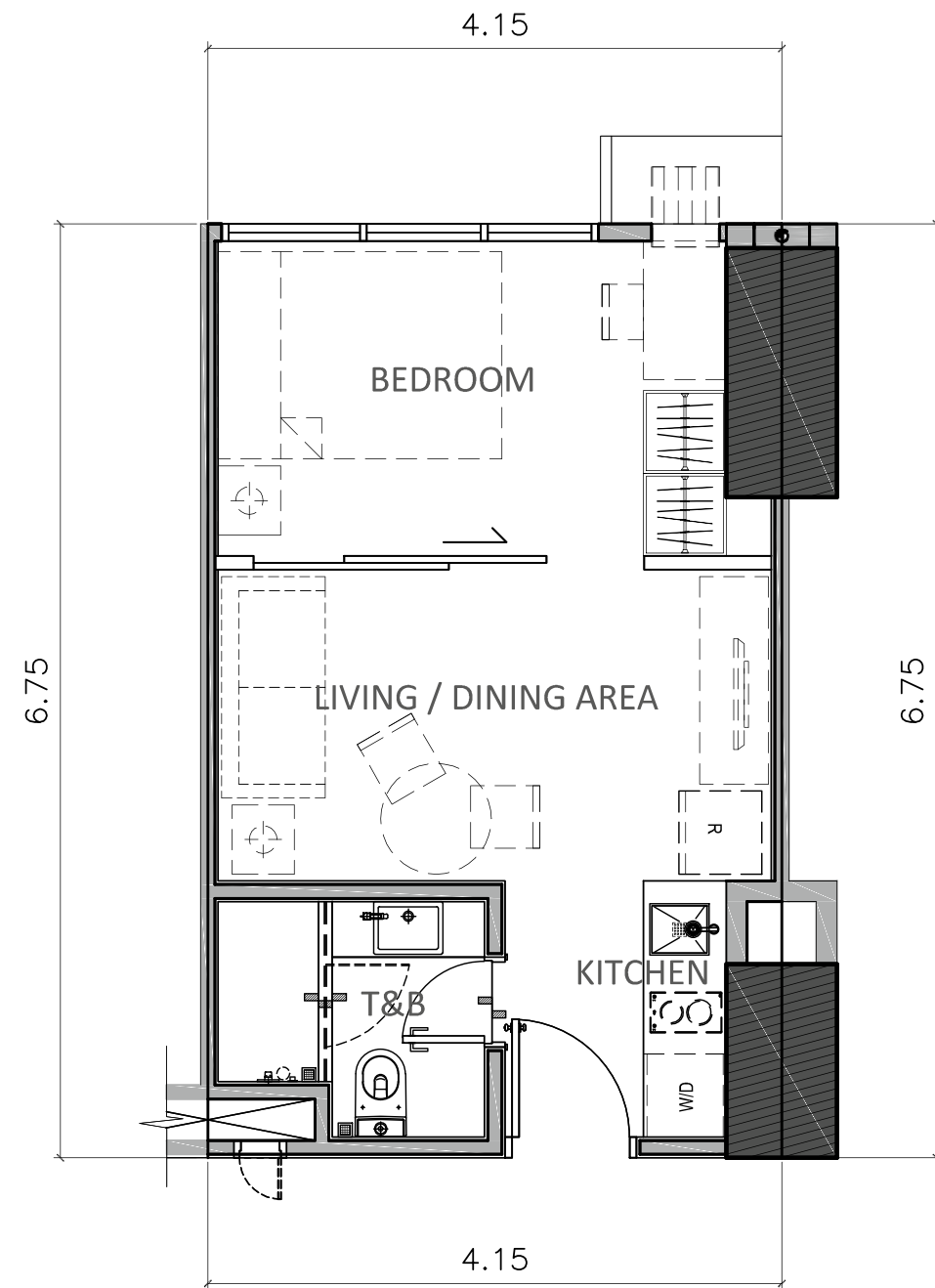
6 - 63rd floors



72.71 – 75.07 sqm
Inclusive of 4.97 sqm balcony

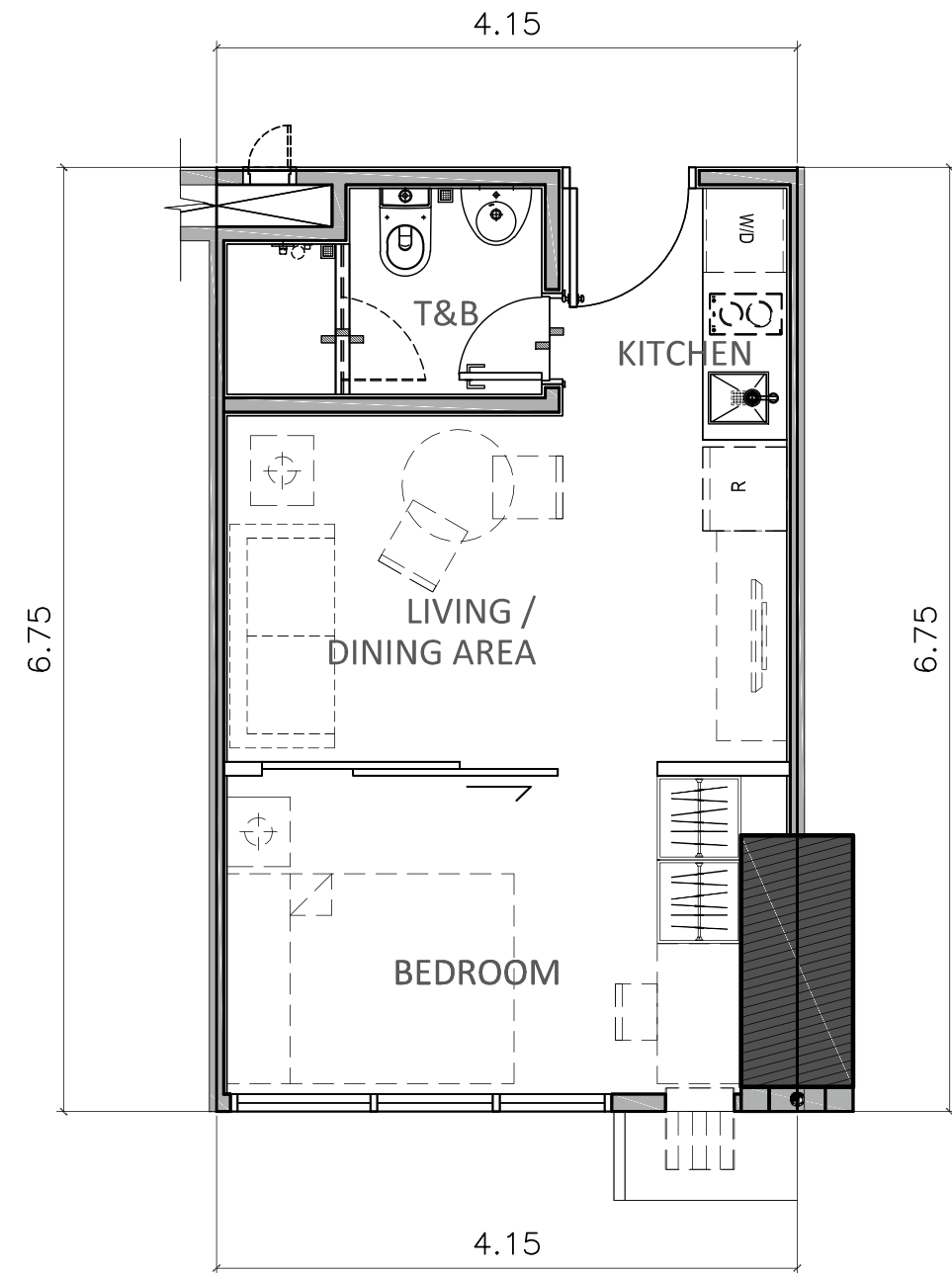
ONE BEDROOM UNIT (WITHOUT BALCONY)

5th - 63rd floors



TYPE 1

28.01 sqm

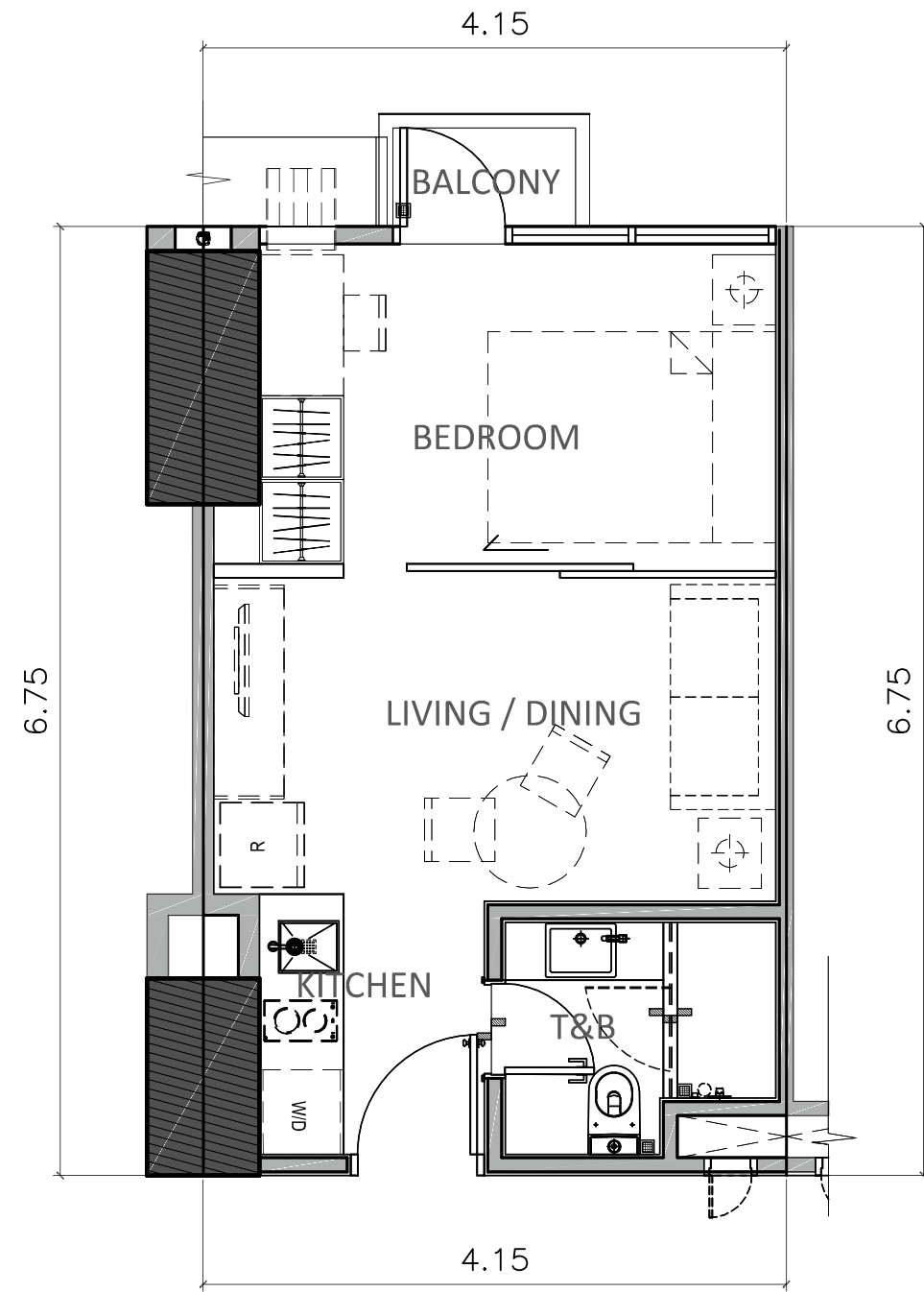


TYPE 2

28.01 sqm

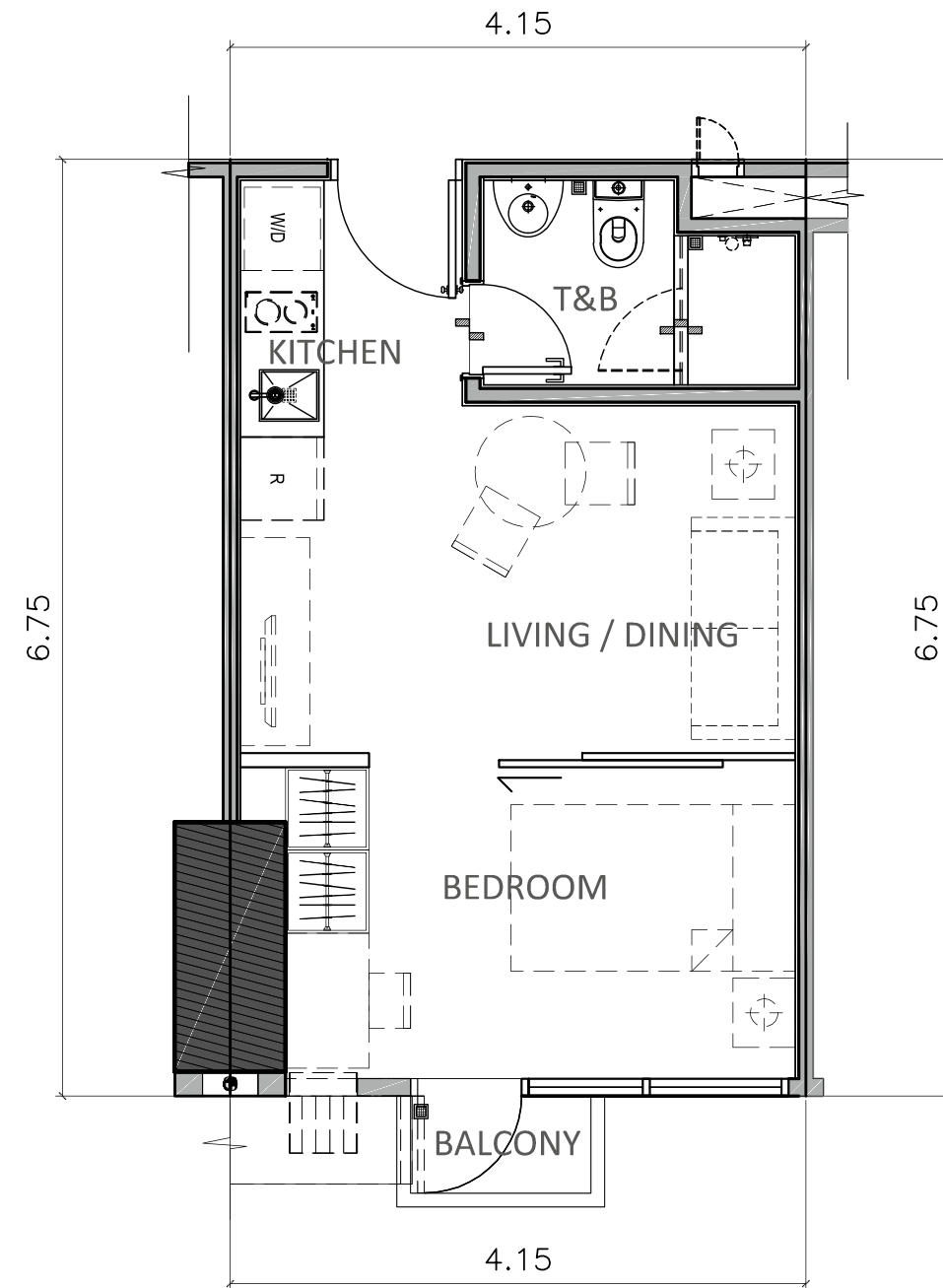
ONE BEDROOM UNIT (WITH BALCONY)

5th - 22nd floors



TYPE 1

29.21 sqm
Inclusive of 1.20 sqm balcony

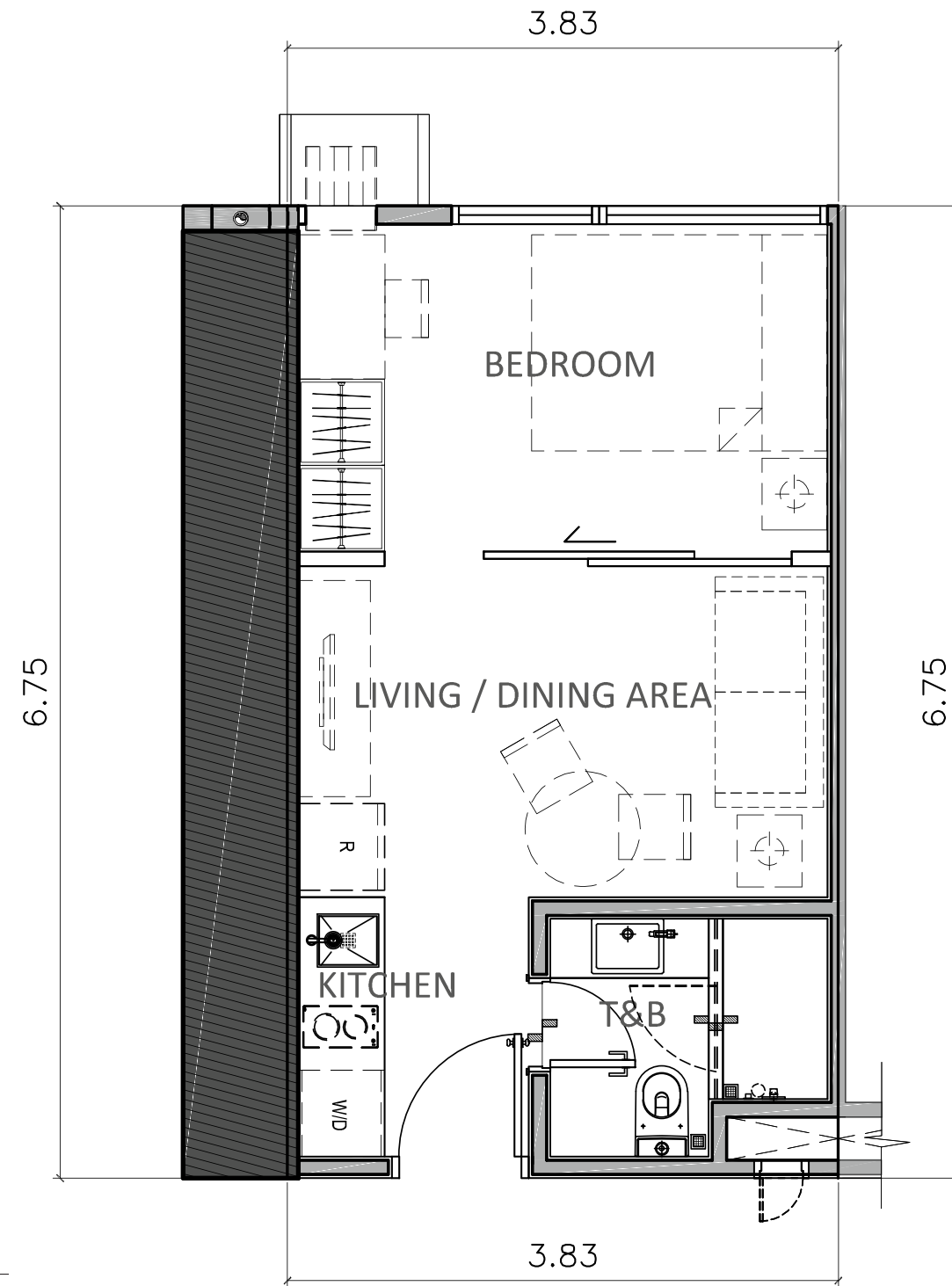


TYPE 2

29.21 sqm
Inclusive of 1.20 sqm balcony

ONE BEDROOM UNIT (WITHOUT BALCONY)

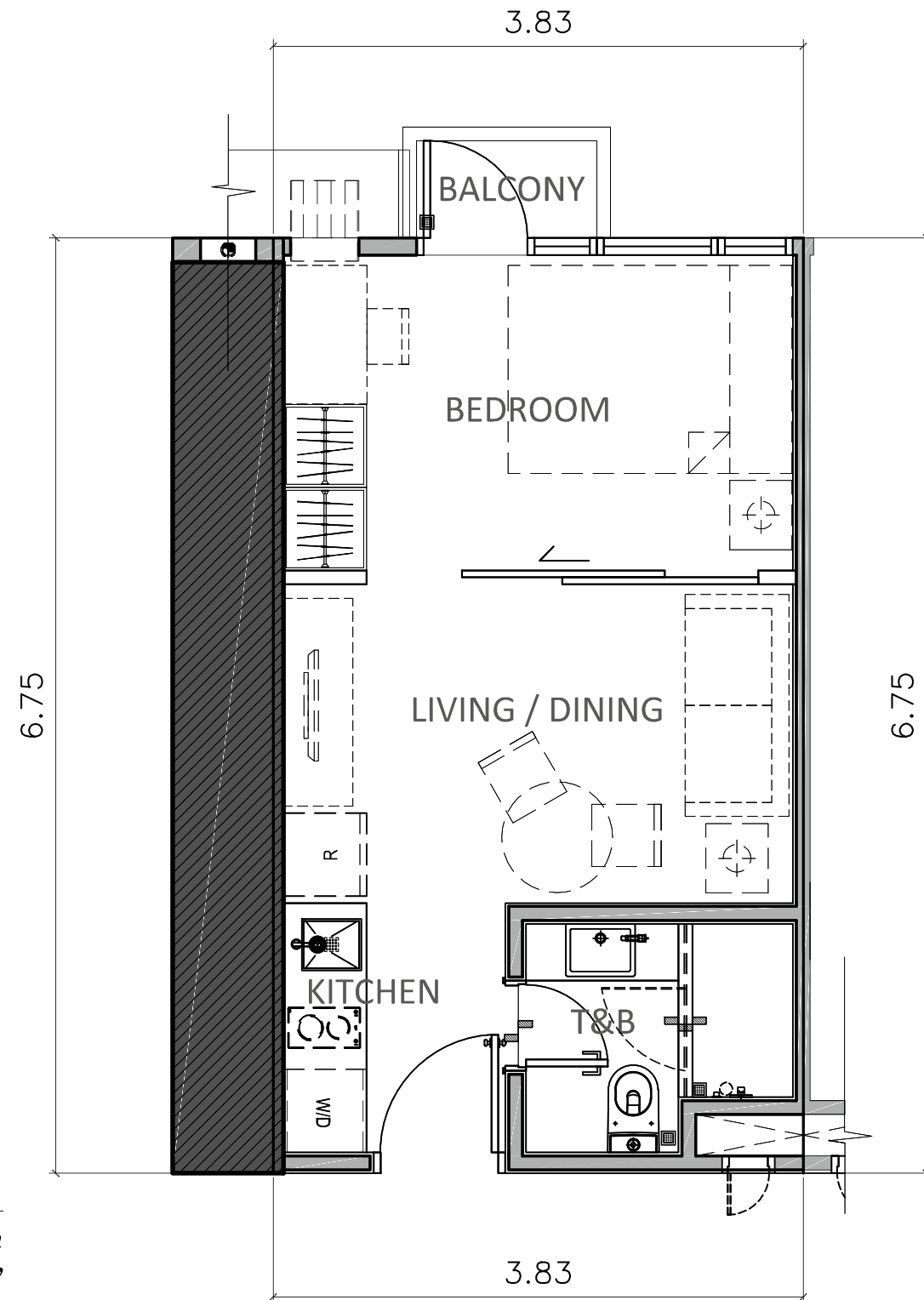
5th - 63rd floors



25.82 – 27.17 sqm

ONE BEDROOM UNIT (WITH BALCONY)

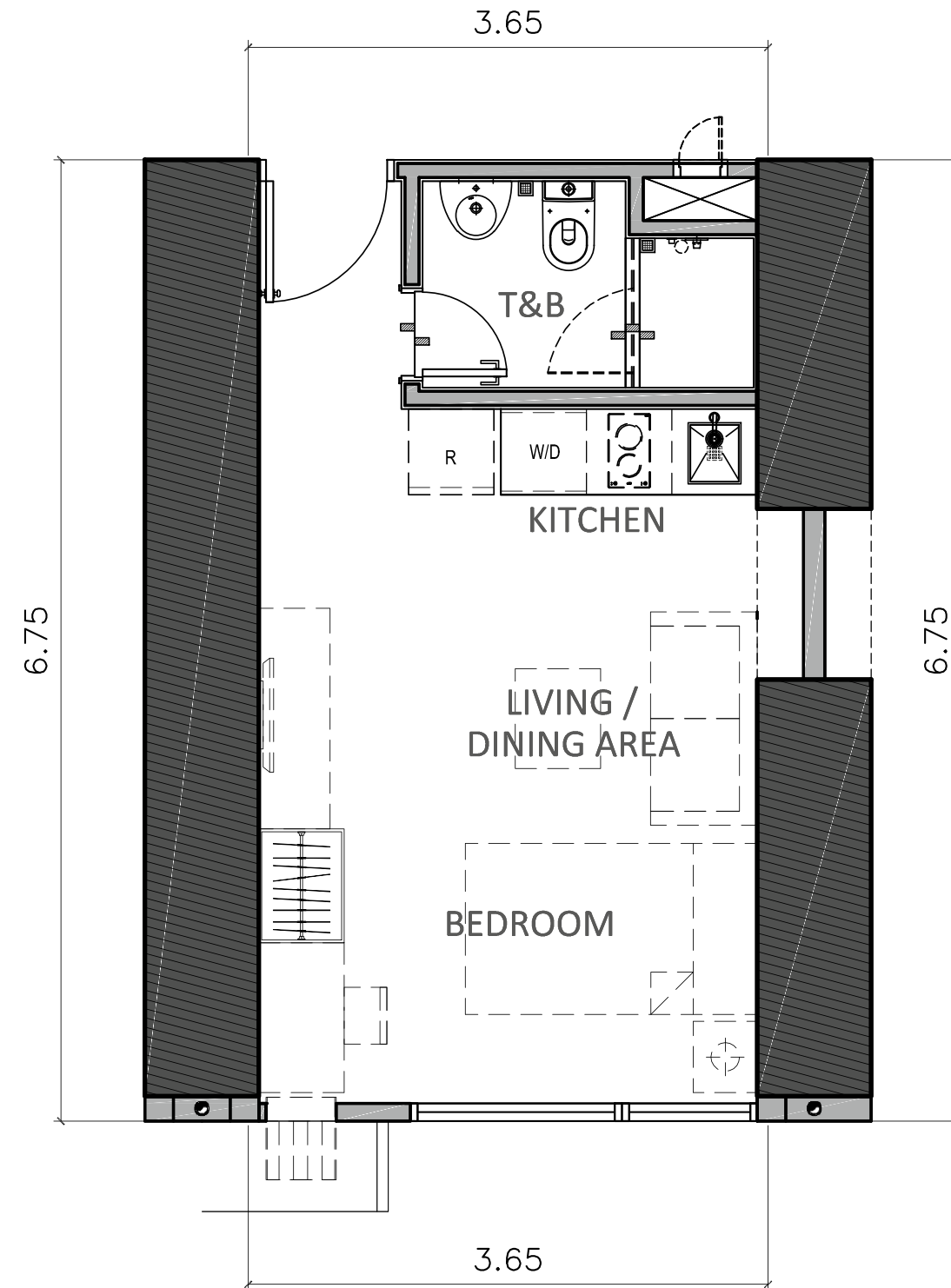
6th, 9th, 10th, 12th, 15th, 16th, 18th, 19th and 21st floors



*27.02 sqm
Inclusive of 1.20 sqm balcony*

STUDIO UNIT

5th - 63rd floors

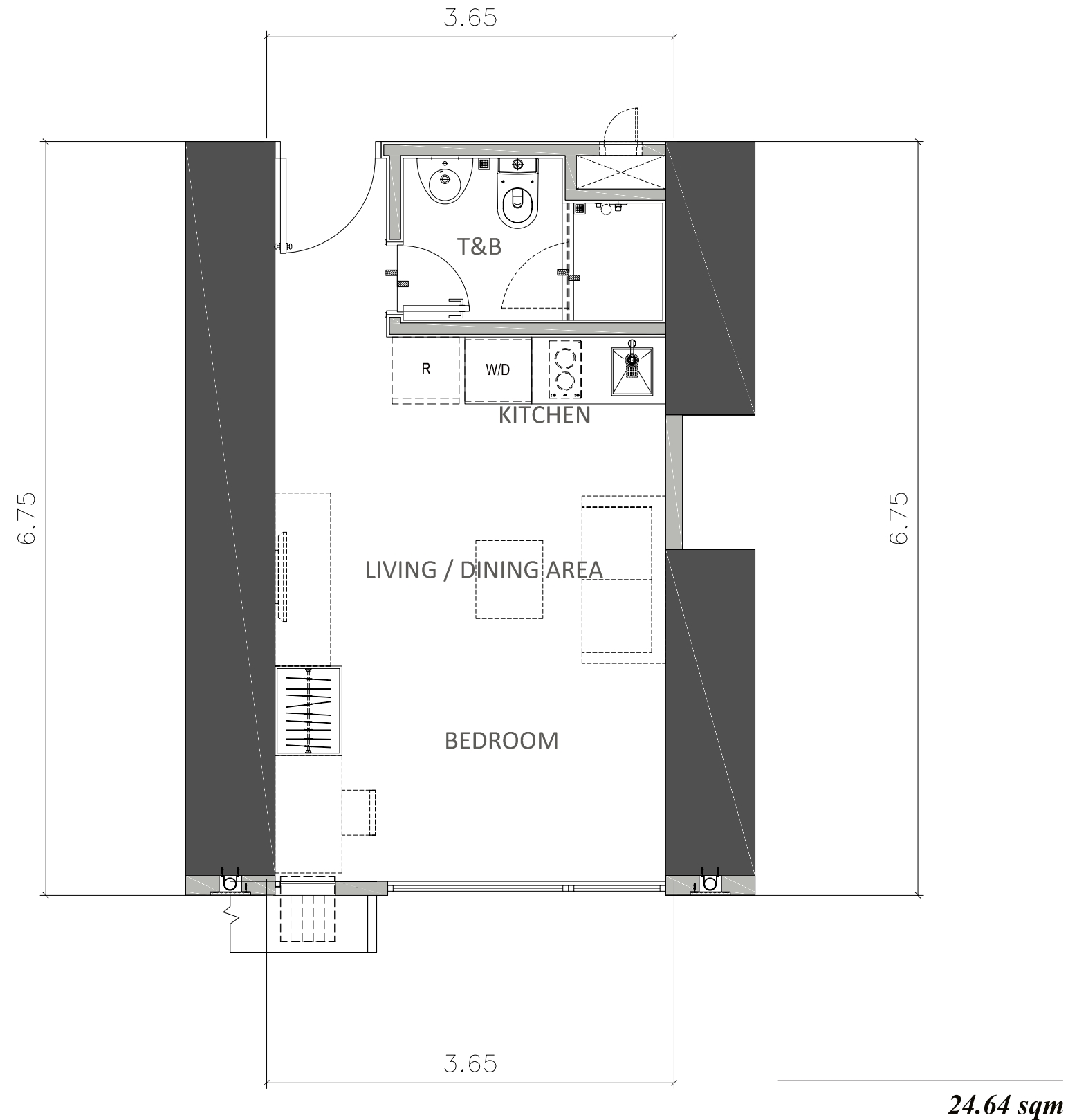


25.08 sqm

STUDIO UNIT (EAST)

5th - 63rd floors

EAST WING ONLY

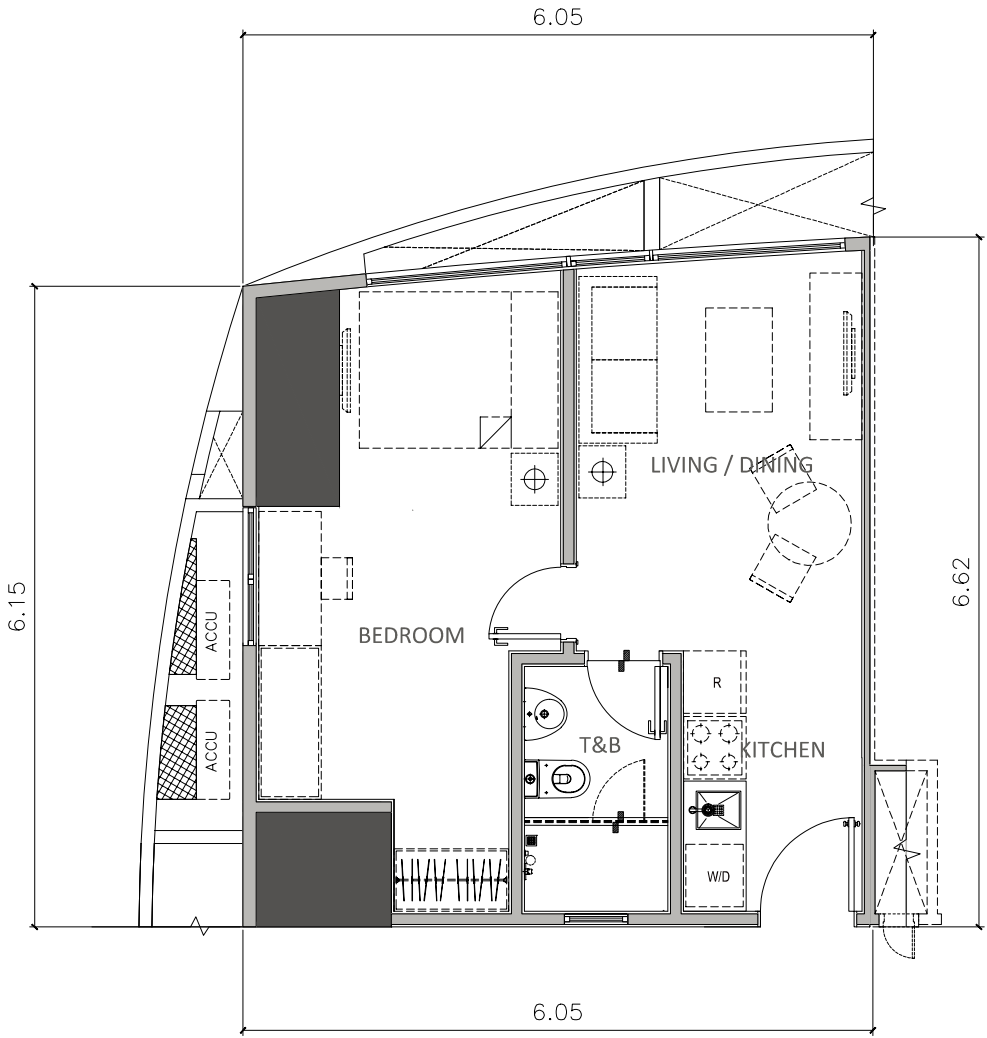


24.64 sqm

I BEDROOM CORNER UNIT (WITHOUT BALCONY)

5th - 63rd floors

EAST WING ONLY

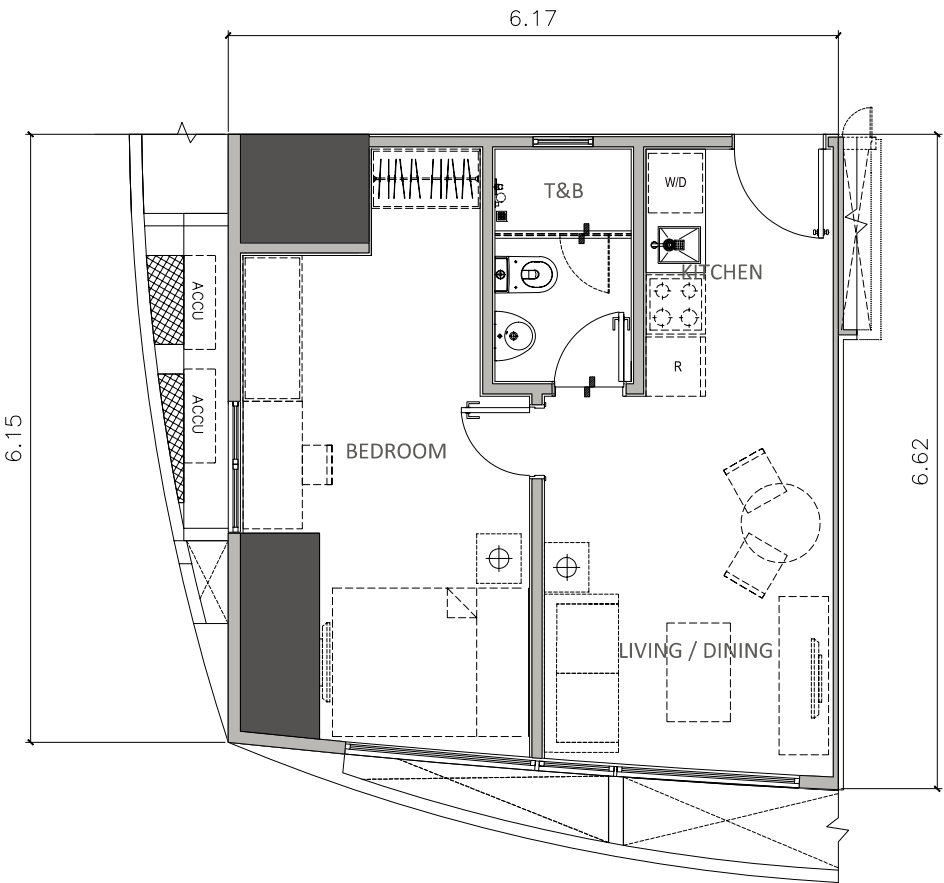


TYPE 1

40.61 sqm

TYPE 2

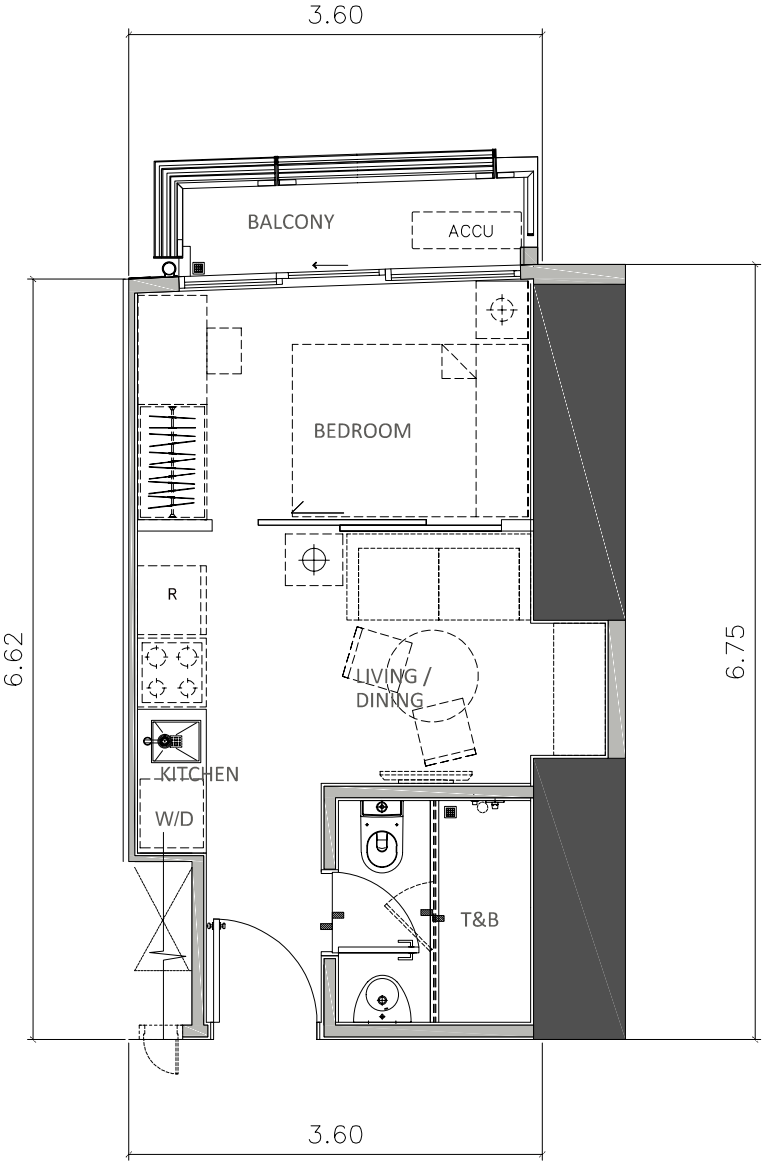
41.53 sqm



I BEDROOM CORNER WITH BALCONY

5th - 63rd floors

EAST WING ONLY

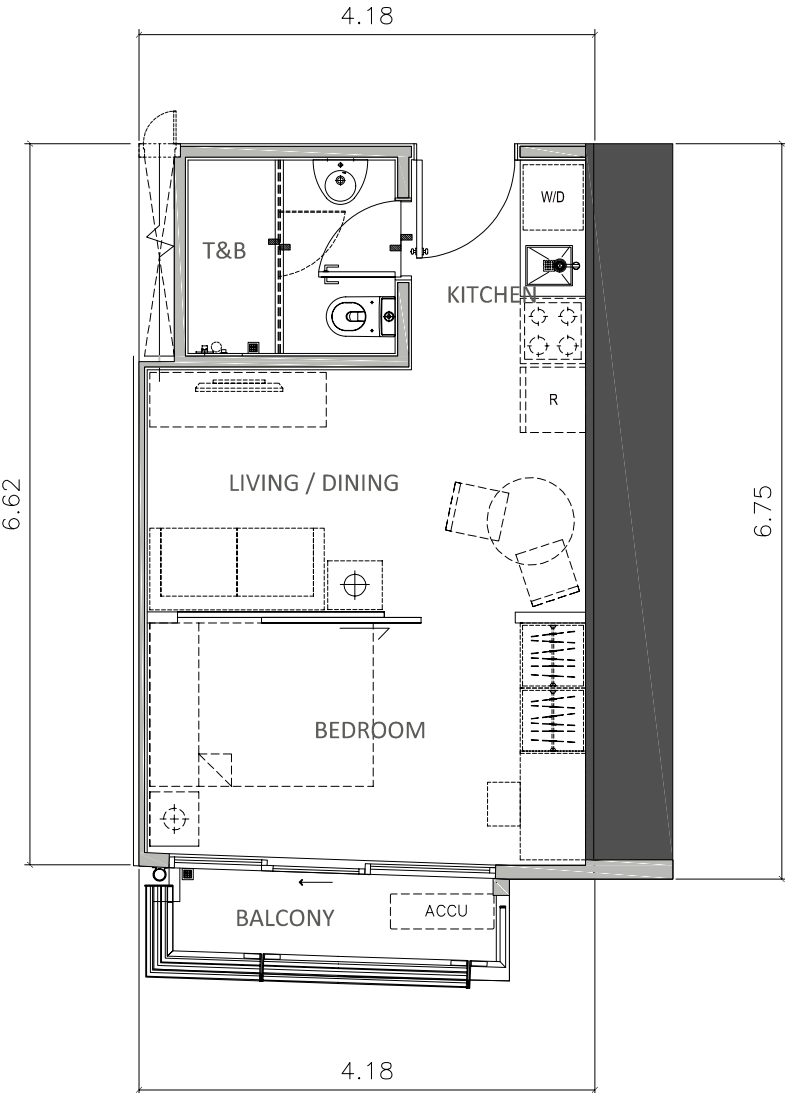


TYPE 1

27.51 - 28.59 sqm
Inclusive of 3.09 sqm balcony

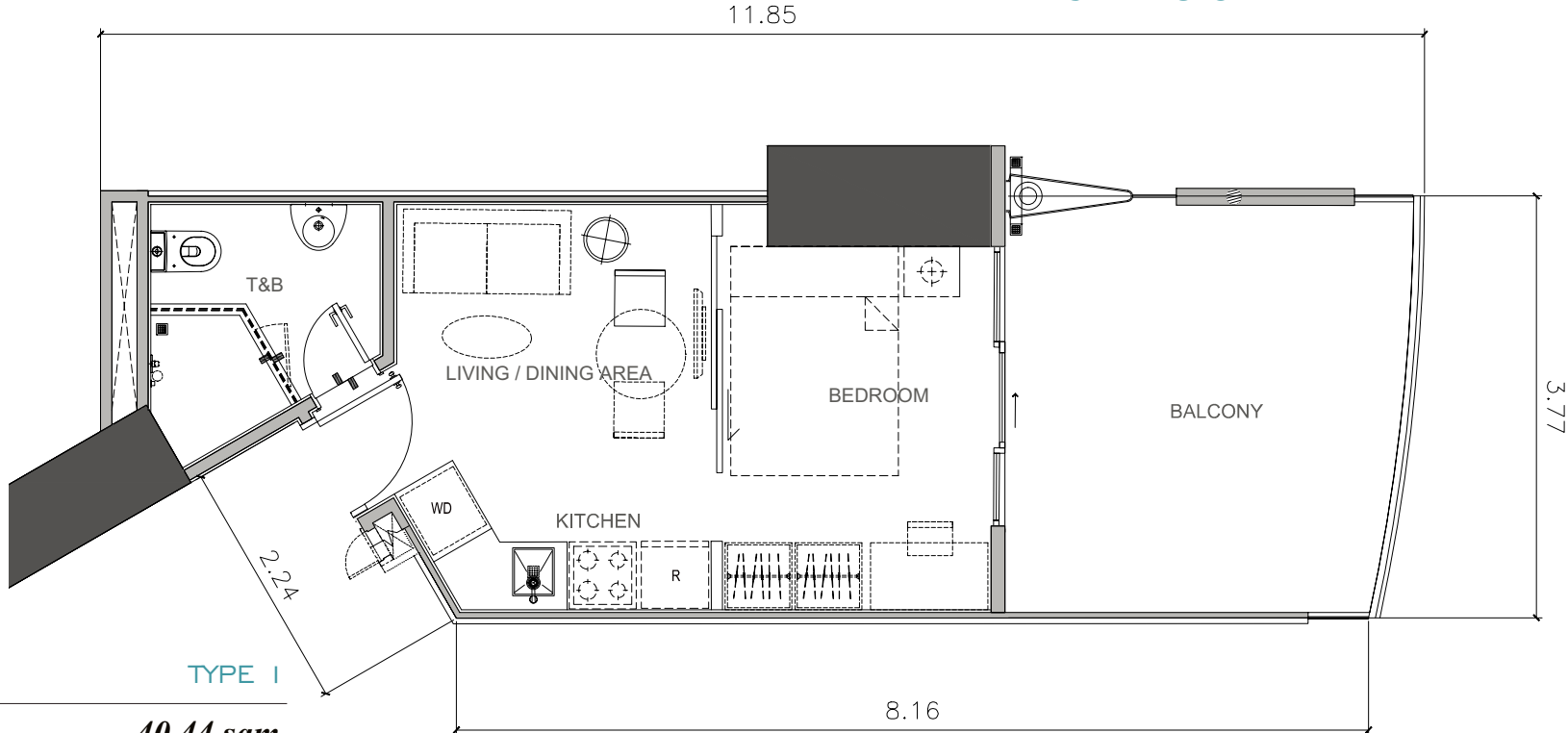
TYPE 2

30.67 - 32.02 sqm
Inclusive of 3.09 sqm balcony

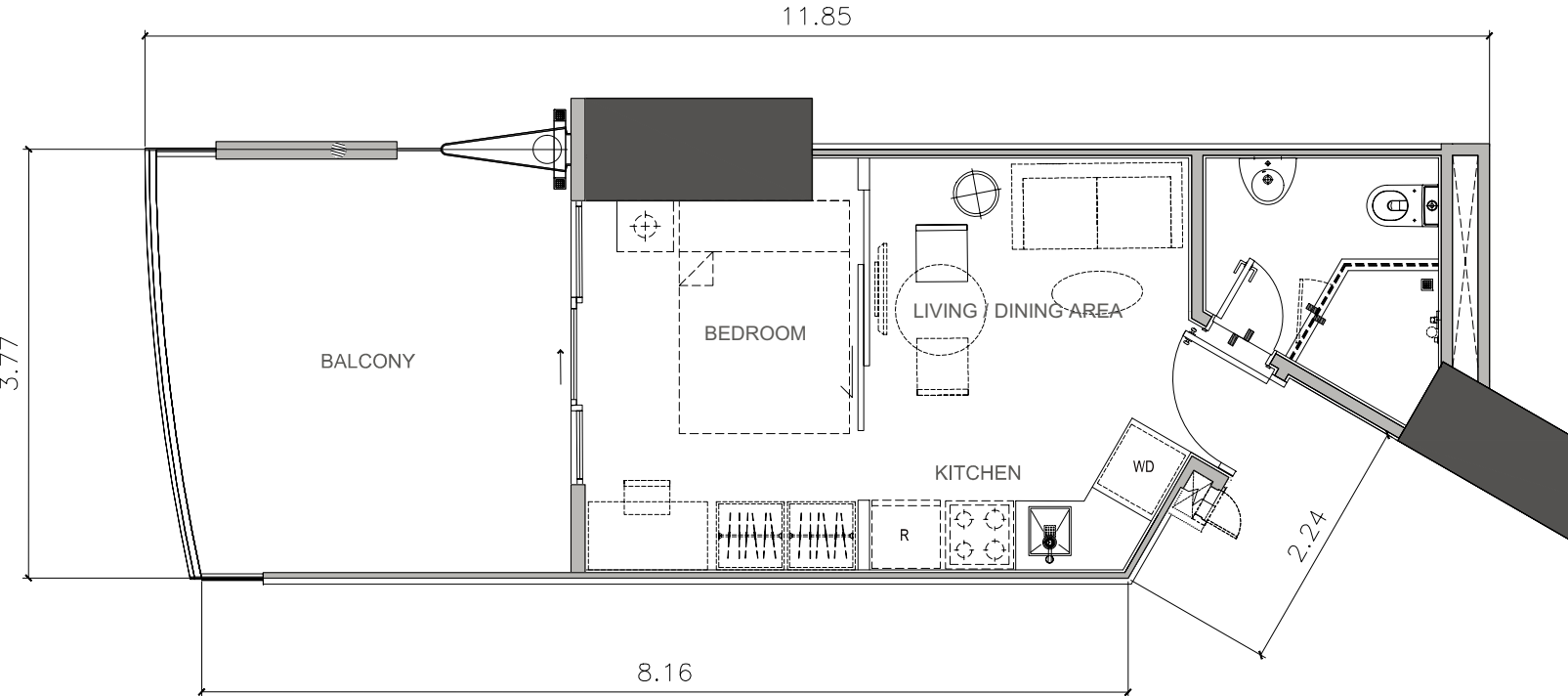


I BEDROOM CORE WITH BALCONY

5th floor
EAST WING ONLY



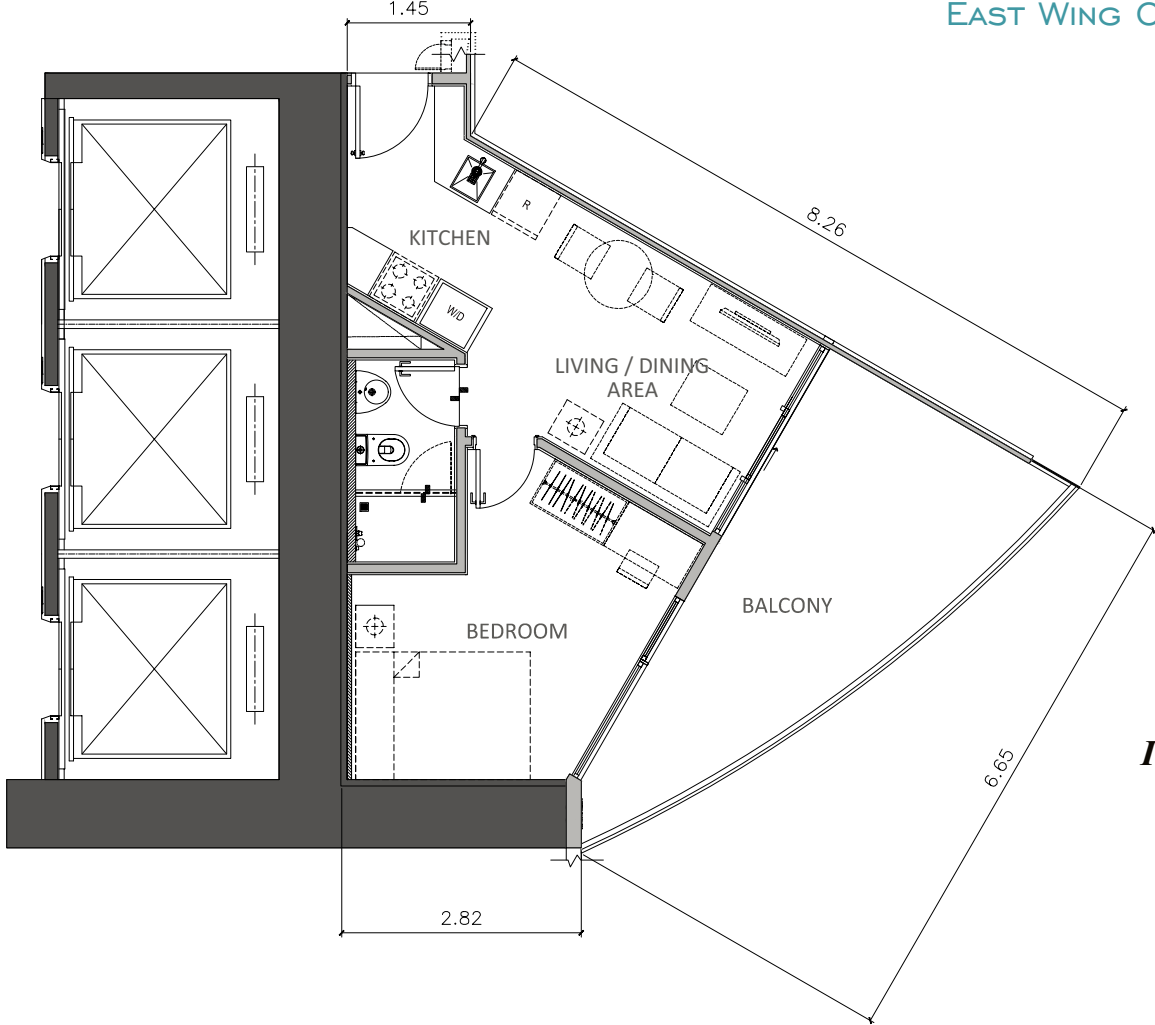
TYPE 1
40.44 sqm
Inclusive of 13.85 sqm balcony



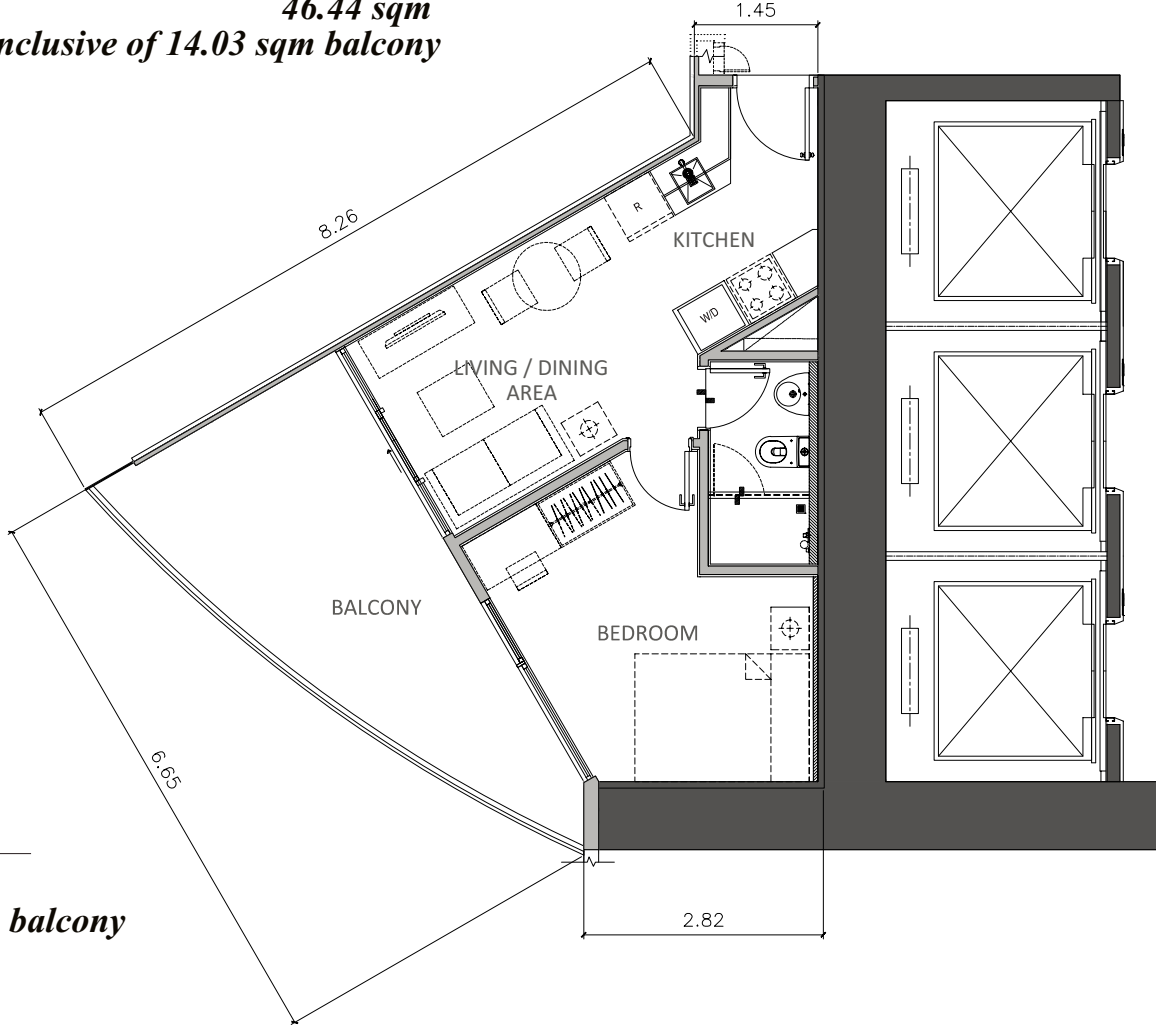
TYPE 2
40.44 sqm
Inclusive of 13.85 sqm balcony

I BEDROOM CORE WITH BALCONY

6th - 63rd floors
EAST WING ONLY



TYPE 1
46.44 sqm
Inclusive of 14.03 sqm balcony

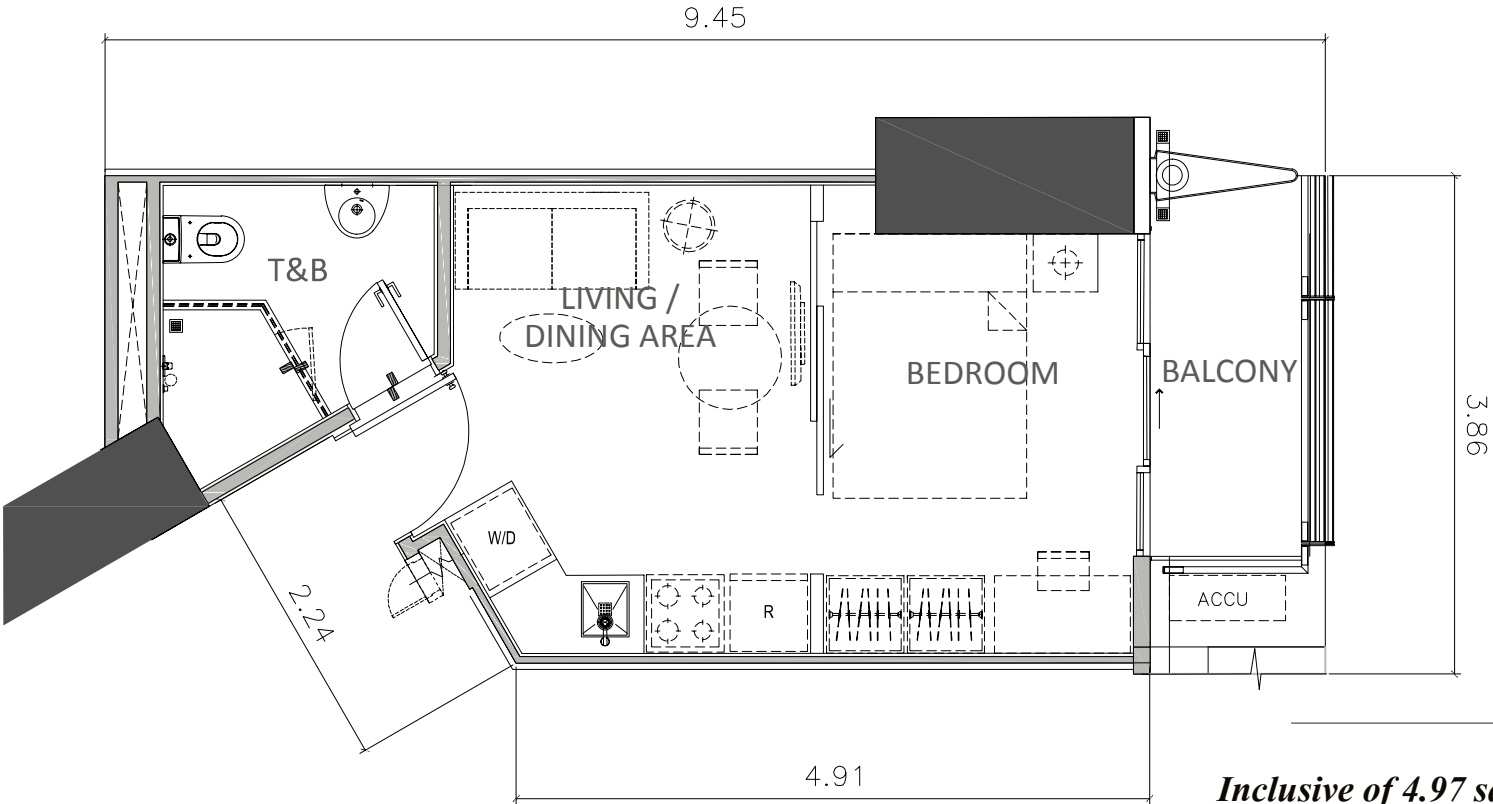


TYPE 2
46.44 sqm
Inclusive of 14.03 sqm balcony

I BEDROOM CORE WITH BALCONY

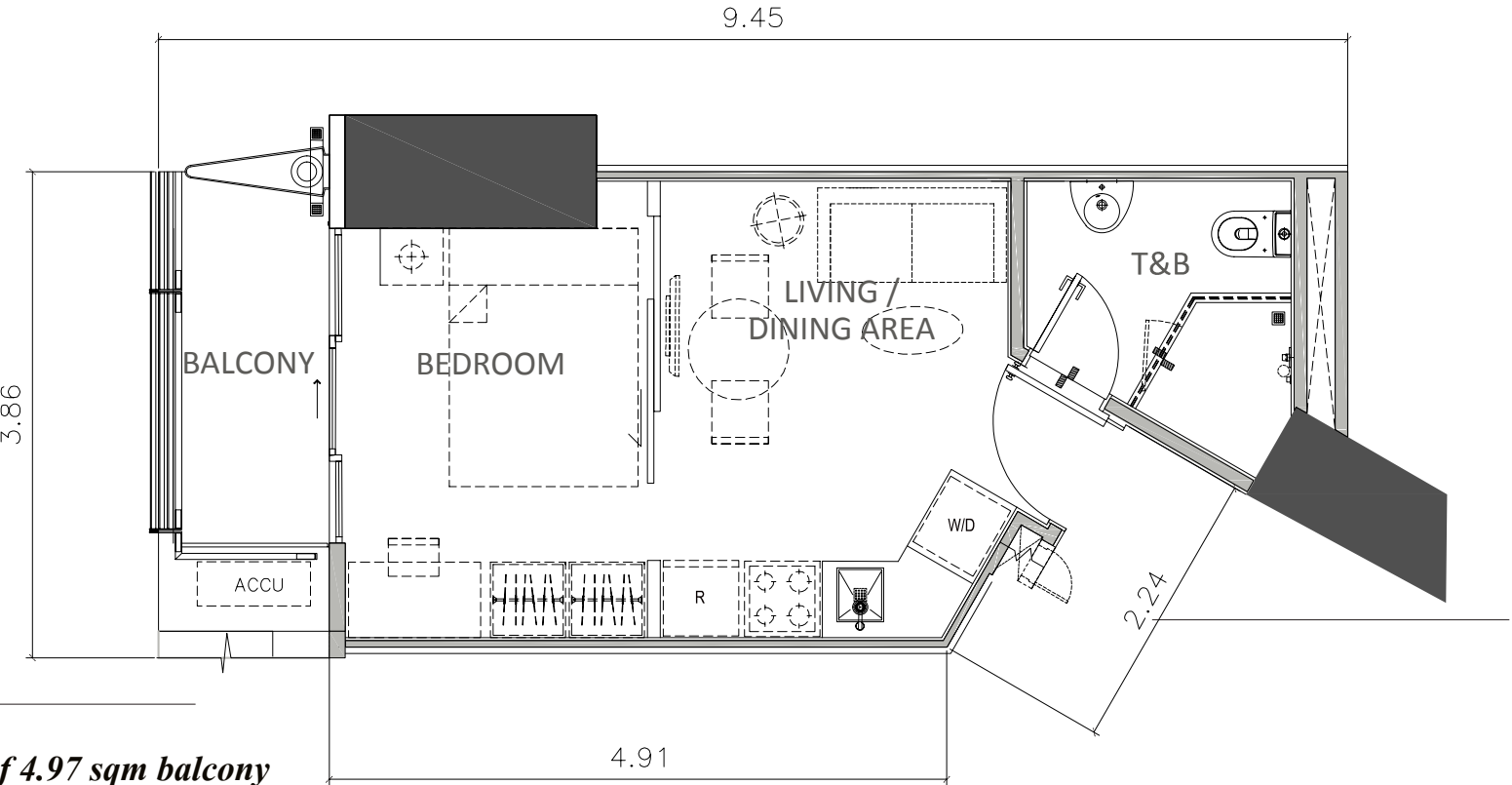
6th - 63rd floors

EAST WING ONLY



TYPE I

31.64 sqm
Inclusive of 4.97 sqm balcony



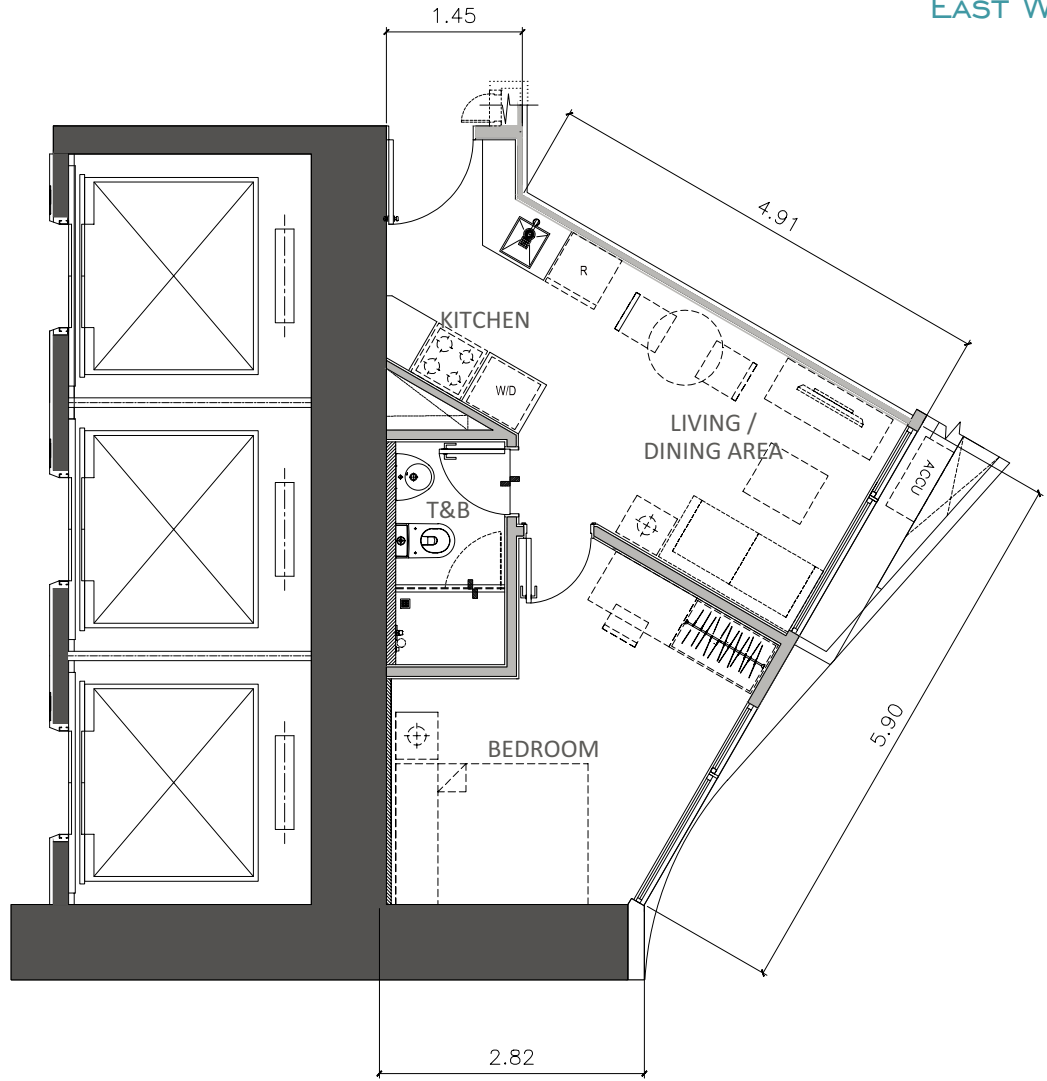
TYPE 2

31.64 sqm
Inclusive of 4.97 sqm balcony

I BEDROOM CORE UNIT (WITHOUT BALCONY)

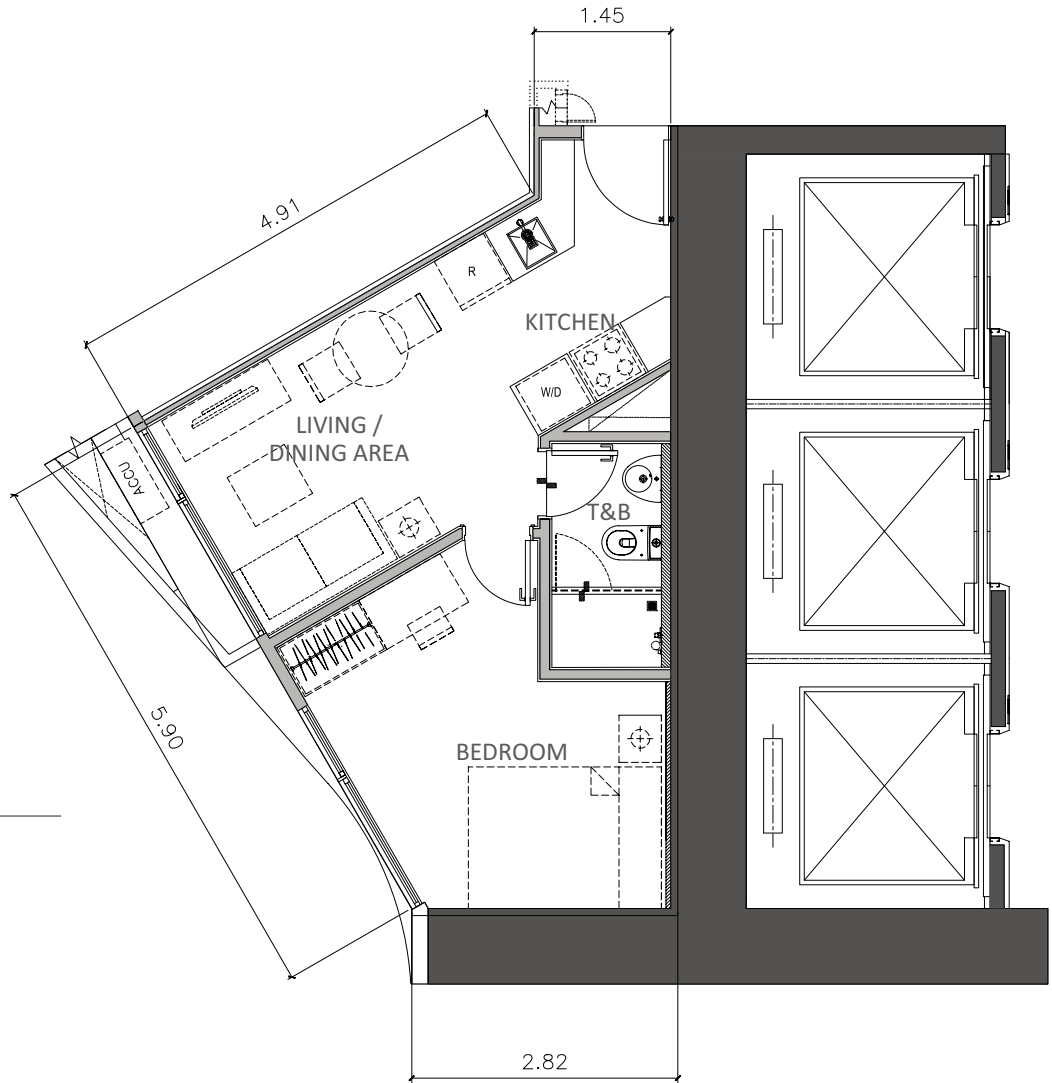
6th - 63rd floors

EAST WING ONLY



TYPE 1

33.60 – 35.88 sqm



TYPE 2

33.60 – 35.88 sqm

WORLD *class* AMENITIES

SPACES AT THE RISE

We designed The Rise with your comfort and ultimate convenience in mind - and that includes completely re-thinking what residential amenities are all about.

With Spaces at The Rise, we present a brand new concept that redefines what best-in-class amenities means: we start with a gorgeous 28 meter tropical pool, and a kids pool; a 380-meter private jogging path set in lush green landscaping; a barbecue patio; a billiards room; multi purpose-function rooms; and a reading room - and that's just a start. Did we mention there's also a two-storey world-class gym?

Divided into The Hangout, The Nest, and The Workshop - Spaces at The Rise is designed to let you decide how you want to play, relax and work - and to make the most of your day.



Amenities overview

Sometimes living in the city can get a little chaotic, so with Spaces at The Rise, we've created a private oasis of world-class amenities to help you make the most of your busy schedule.

1. RECEPTION
2. 'THE NEST' LOUNGE AREA
3. 'THE HANGOUT' LOUNGE AREA
4. 'THE WORKSHOP' LOUNGE AREA
5. GYM *2nd floor gym area not shown on this layout
6. PILATES/YOGA ROOMS
7. CHANGING ROOMS / SAUNA
8. PARTY / FUNCTION ROOMS
9. 'CRAWL SPACE' INFANTS' PLAY AREA
10. 'KID'S ZONE' TODDLERS' PLAY AREA
11. BILLIARDS ROOM
12. LIBRARY
13. KARAOKE ROOMS / HOME CINEMA
14. MAIN POOL
15. KIDS POOL
16. FLOATING LOUNGERS
17. SUN DECK
18. POOLSIDE LOUNGE
19. JOGGING TRAIL
20. OUTDOOR CHILDRENS PLAY AREA
21. THE LAWN
22. PROMENADE
23. BBQ AREA



the HANGOUT

Life's more fun when you share it with the people you love. With almost 300 square meters of open lounge areas, The Playroom includes a karaoke room, a billiards room and more, and is perfect for entertaining friends and family, whether it's for a special occasion, or just to catch up over a cup of coffee.



'THE HANGOUT' LOUNGE AREA

the WORKSHOP

The Workshop is a fully-stocked, purpose-designed workspace that includes multi-function rooms, an I.T bar, a library and more - ideal for when you're in the mood to plan your next big adventure, need a quiet space to focus on your studies, or even to brainstorm on a start-up idea with your partners.



'THE WORKSHOP' LOUNGE AREA

the NEST

Take a break from the hustle and bustle of daily life in The Nest, our relaxation and well-being zone that includes swinging hammocks, comfy seats, garden terraces and much more. Curl up with your favourite novel, or chill out on the sun deck for a relaxing day with friends and family.



'THE NEST' LOUNGE AREA



HEALTHY *urban* LIVING

Our expansive two-storey gym is packed with world-class training and exercise equipment designed for young professionals and families who work hard and play hard. Perfect for burning off that extra slice of pizza!



JUST *dive* IN

Cool off with a dip in the gorgeous 28 meter tropical pool, relax with a book under the swaying trees, or stretch your legs with a stroll around the 380 meter private jogging track. When it comes to unwinding after a long day at work or catching up with your friends on the weekends - we've got you covered.



the KID'S ZONE

The Rise is designed for kids too - with over 280 square meters of playspace for infants and toddlers, the Kid's Zone is perfect for the young ones to stretch their legs, climb a jungle gym, dive into a colourful ball pit, and even have a birthday party!





DINING *and services* TAILORED *for you*

With 2 levels, and more than 50 vendors for dining, retail, and services - you're never more than a few short steps away from everything you'll need in our boutique retail mall.

From uniquely quirky cafes and bars; to the best dining experiences this side of Makati; to banks, daycare centres, convenience stores, tailors, and spa services - we've assembled the best retailers and service providers to ensure that at The Rise, there's something for everyone.





RISE *above* THE REST

Located conveniently within 8 minutes walking distance from the Makati CBD, at the heart of the burgeoning North Makati (NOMA) district.

The Rise combines celebrated world-class architecture and interior design, with Shang Properties' signature build quality to create a one-of-a-kind residential and commercial development.

CONSULTANTS *of* THE RISE

Foreign Architects: KPLUSK (HK) INTERNATIONAL LIMITED

Local Architects: ASYA DESIGN

Landscape Consultants : ADRIAN L. NORMAN LIMITED (ALN)

Façade: KONSTRUCT WEST PARTNERS (KWP)

Structural Consultants : SY2 AND ASSOCIATES INCORPORATION

Interior Design: BTR WORKSHOP LIMITED



Showsuite and Sales Office

*4th Avenue corner Rizal Drive, Bonifacio Global City,
Taguig 1634, Philippines
Tel: +632 THE RISE (843-7473)*

WWW.THERISEMAKATI.COM