

# Ammaia STEPS

Alabang

ESPERANZA

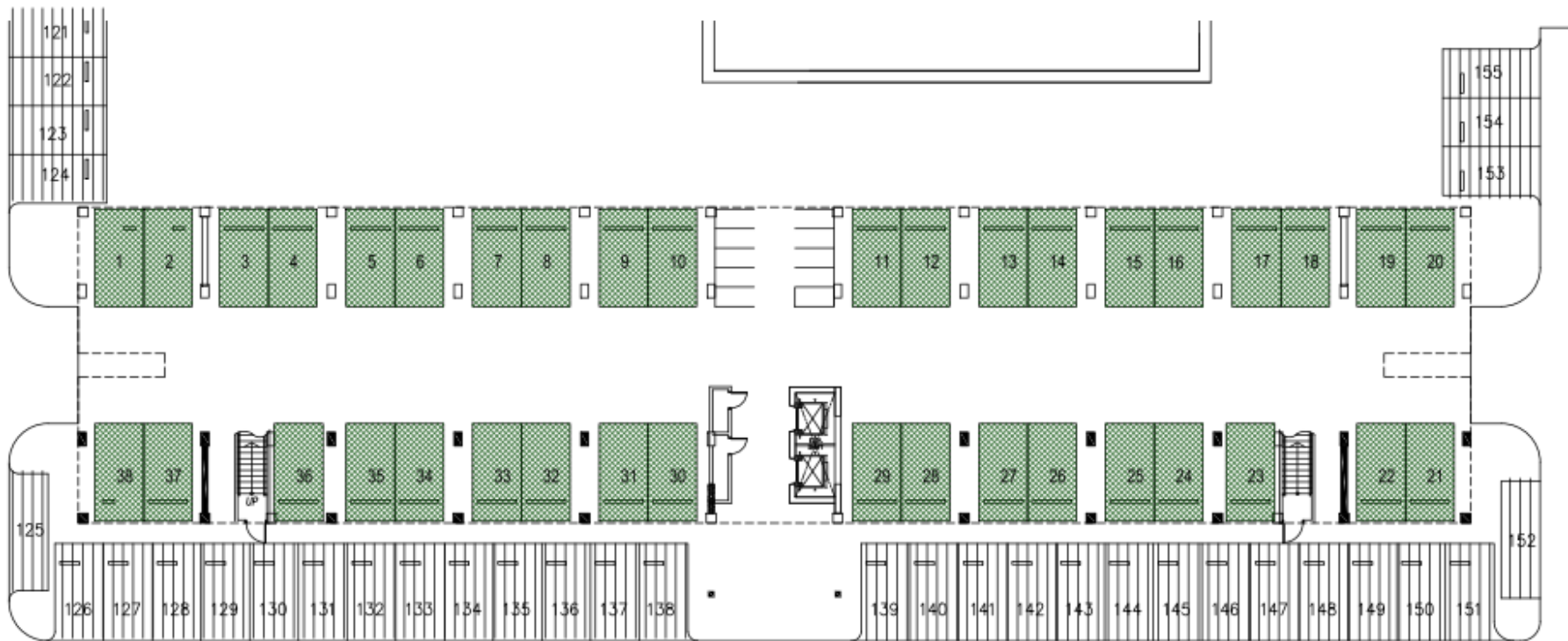
# SITE DEVELOPMENT PLAN



## ESPERANZA

- **No of floors:** 9 (8 residential, 1 parking)
- **Residential:** 256 units
- **Parking:** 73 units

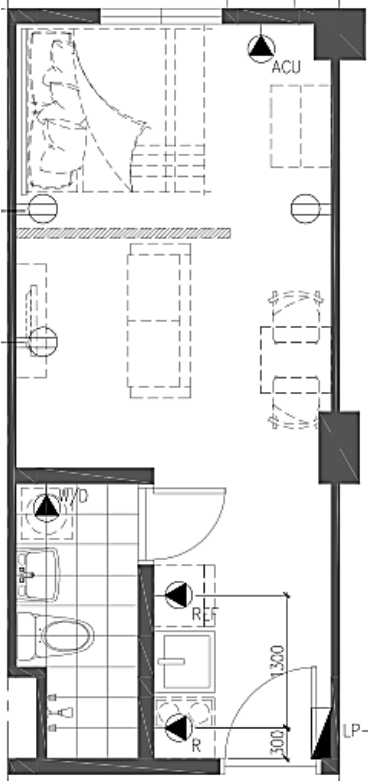
# ESPERANZA GROUND FLOOR



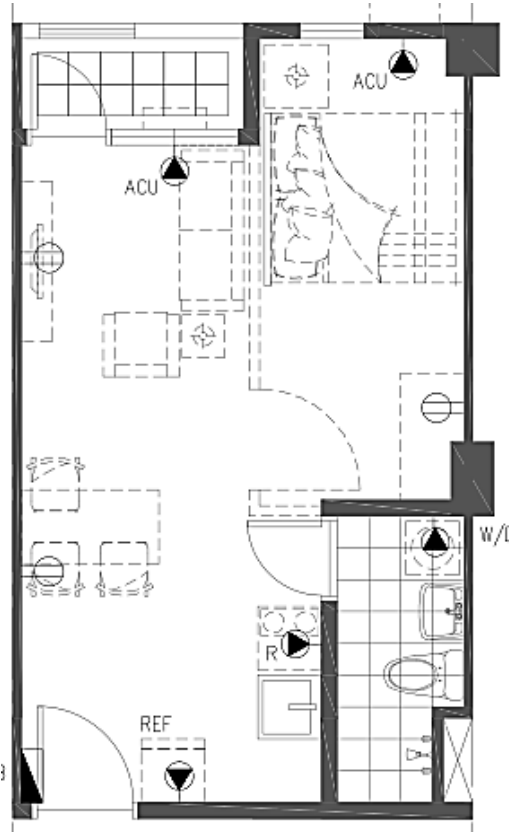
# ESPERANZA TYPICAL FLOOR PLAN



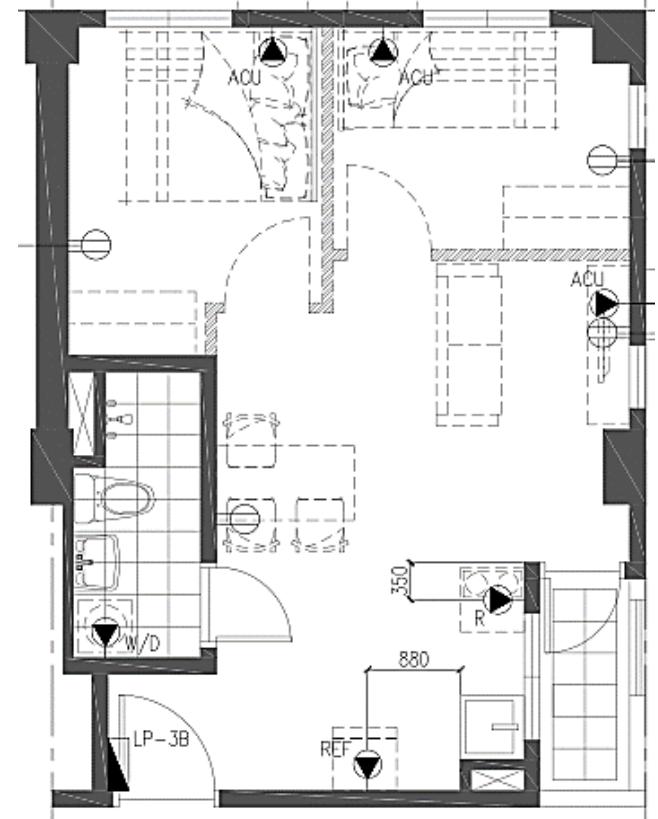
# UNIT TYPES



**Possible 1 BR**  
24.37 sqm  
2.7m



**Possible 1 BR**  
32.50 sqm  
3.19m



**Possible 2 BR**  
42.00 sqm  
4.8-5m



# UNIT DELIVERABLES



## Flooring

- Unit: Vinyl planks
- Balcony: Cement finish
- T&B: Ceramic tiles

## Walls

- Unit: painted concrete
- T&B: Ceramic tiles & CHB (wet area); painted walls (dry area)

## Windows

- Aluminum framed powder coated windows

## Ceiling

- Unit: Painted concrete
- T&B: Water resistant gypsum board

## Kitchen

- Kitchen sink with base cabinet
- Grease trap

## Toilet and Bath

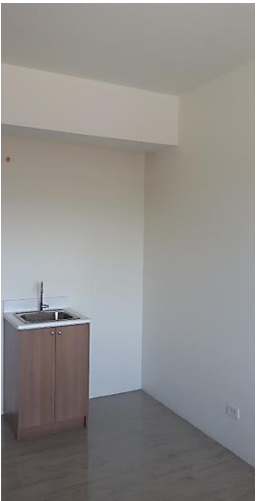
- Complete toilet and bath fixtures

## Laundry area

- Provision for washer/dryer; units with balconies have utility/drying area for the resident's convenience

## Units

- Telephone and cable ready
- Equipped with smoke detectors, fire sprinklers and emergency lights



# AMENITIES



Swimming Pool | Basketball Court | Landscaped Gardens | Guard House | Clubhouse | Children's Play Area