

ACACIA ESCALADES



ROBINSONS LAND
RESIDENTIAL DIVISION

We Are Home.

ROBINSONS
COMMUNITIES
Affordable quality condos



ROBINSONS LAND
RESIDENTIAL DIVISION

We Are Home.

DISCLAIMER: All plans, specifications, and illustrations contained herein are for identification and reference only. While every care has been taken in preparation of this material, all details are subject to change without prior notice and do not constitute part of any offer or contract. The developer does not authorize the person to render any representation or warranty regarding this project. Sales agents are not authorized to make statements outside this material.

ROBINSONS
CommUNITIES
Affordable quality condos



See Your Future Flourish

Watch the fruits of your labor come alive in another smart affordable investment option from Robinsons Communities: **Acacia Escalades**, a two-tower development in Manggahan, Pasig City.



HLURB LTS # 029250



Nearby Schools

University of the Philippines Diliman
Ateneo de Manila University
University of Asia and the Pacific
Miriam College
Entrepreneurs School of Asia

Nearby Commercial Areas

Robinsons Metro East
Eastwood City
Robinsons Galleria
SM Marikina
Shopwise Libis
SM Hypermarket Pasig
South Supermarket
Savemore Supermarket Santolan
Sta. Lucia East Grand Mall/Brick Road

Nearby Healthcare Facilities

The Medical City
Amang Rodriguez Medical Hospital

Get Soaked in Convenience

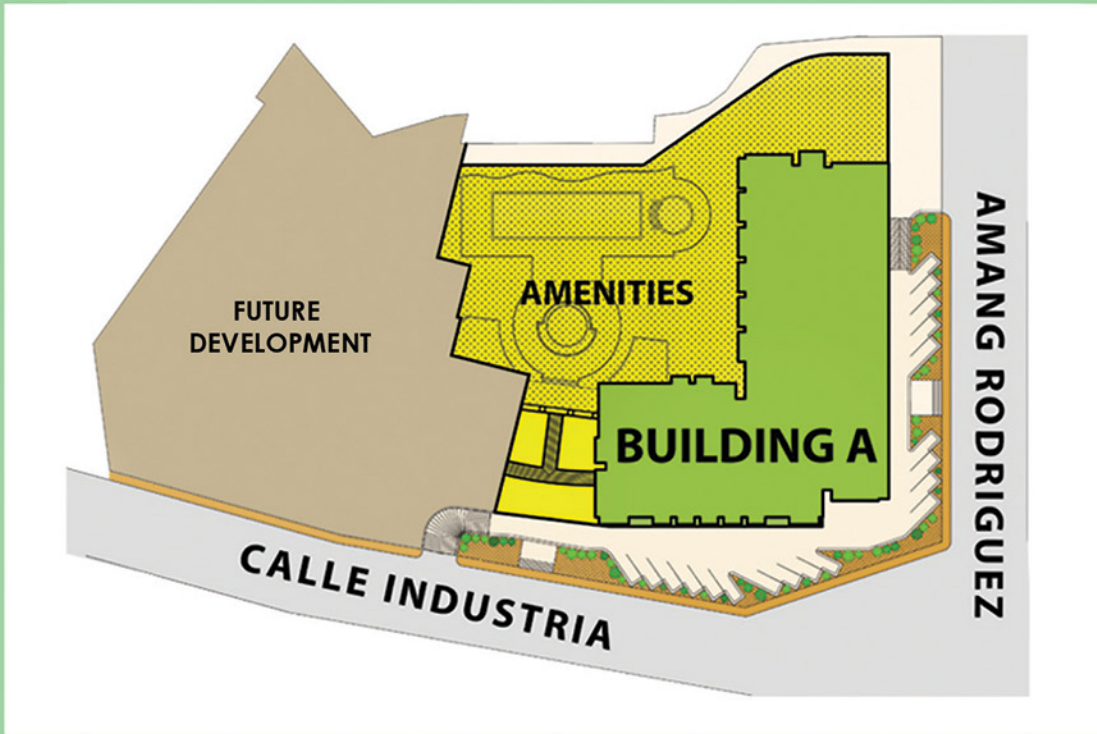
Have zero trouble running your daily errands with Acacia Escalades' practical location.

So near but not so far. **Acacia Escalades'** location in Amang Rodriguez corner Calle Industria in Manggahan is comfortably near business districts for your weekday dash, and peaceful enough for your weekend joys.

Quick city link. Easy access of transportation systems from **Acacia Escalades** takes you from your home to another place in no time at all.

Water proof. While **Acacia Escalades'** ingenious design guards you against the summer heat, its flood-free location spells the assurance for rainy days.





Site Development

Watch the fruits of your labor come alive in another smart affordable investment option from Robinsons Communities: **Acacia Escalades**, a two-tower development in Manggahan, Pasig City.





ROBINSONS LAND
RESIDENTIAL DIVISION

We Are Home.

DISCLAIMER: All plans, specifications, and illustrations contained herein are for identification and reference only. While every care has been taken in preparation of this material, all details are subject to change without prior notice and do not constitute part of any offer or contract. The developer does not authorize the person to render any representation or warranty regarding this project. Sales agents are not authorized to make statements outside this material.

ROBINSONS
CommUNITIES
Affordable quality condos



Theme / Architectural Design

The modern Filipiniana design concept of Robinsons Communities' Escalades development brings you the benefits and aesthetics of:

- Sunlight penetrating freely
- Cross ventilation
- Visible outdoor scenery at both sides of the units
- Earth colors complementing tropical setting

Depending on your space preference, **Acacia Escalades** also offers units with balconies.





Building Facilities / Services

- Guard House
- CCTV cameras at strategic locations
- Back-up power supply
- Individual mailboxes
- Centralized garbage area
- Automatic fire sprinkler and fire detection systems at hallways
- Fire hoses at the hallways near the stairwells





Project Designer

Architect Edgardo "Butch" Daza received a Bachelor of Science in Architecture degree in 1986 from the Technological Institute of the Philippines. He passed the Professional Regulation Board Exam for Architects in 1990 and is a Corporate Member of the United Architects of the Philippines.

His 20 years of work experience, he has been involved with various projects, local and international. From residential to commercial and even industrial and institutional projects, these have given him the necessary experience to enhance his professional practice.

As an Associate/Managing Partner of Arkiasia, his responsibility includes Design Planning and Conceptualization, Preparation of Construction Documents, Project Management and Client Coordination.





ROBINSONS LAND
RESIDENTIAL DIVISION

We Are Home.

DISCLAIMER: All plans, specifications, and illustrations contained herein are for identification and reference only. While every care has been taken in preparation of this material, all details are subject to change without prior notice and do not constitute part of any offer or contract. The developer does not authorize the person to render any representation or warranty regarding this project. Sales agents are not authorized to make statements outside this material.

ROBINSONS
CommUNITIES
Affordable quality condos



Unit Options

Unit Type	Area (Approx.)	No. of Units
Studio	26.40 to 32.01 sqm	88 units
1-Bedroom	32.00 to 38.80 sqm	165 units
2-Bedroom	48.00 to 57.69 sqm	130 units





ROBINSONS LAND
RESIDENTIAL DIVISION

We Are Home.

DISCLAIMER: All plans, specifications, and illustrations contained herein are for identification and reference only. While every care has been taken in preparation of this material, all details are subject to change without prior notice and do not constitute part of any offer or contract. The developer does not authorize the person to render any representation or warranty regarding this project. Sales agents are not authorized to make statements outside this material.

ROBINSONS
Communities
Affordable quality condos



Typical Floor Plan

Building A

4th Floor



LEGEND:

- STUDIO
- ONE BEDROOM
- TWO BEDROOM



Typical Floor Plan

Building A

Floors 6, 8, 10, 12, 15



LEGEND:

- STUDIO
- ONE BEDROOM
- TWO BEDROOM



Typical Floor Plan

Building A

Floors 5, 7, 9, 11, 14



LEGEND:

-  STUDIO
-  ONE BEDROOM
-  TWO BEDROOM

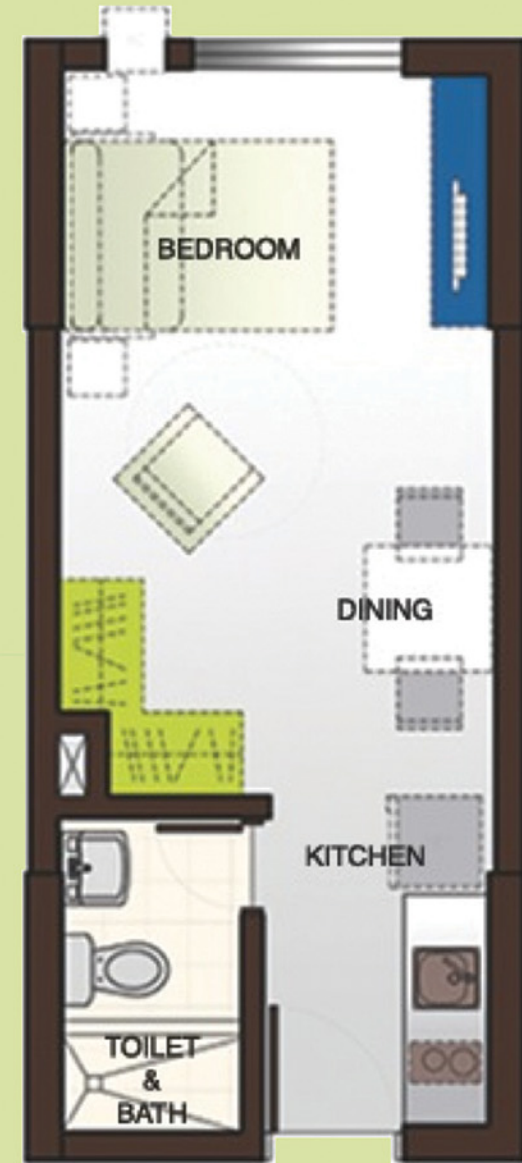


Unitized Floor Plan

Building A

Studio

Approximately 26.50 sqm





Unitized Floor Plan

Building A

1-Bedroom Unit
Approximately 35.72 sqm

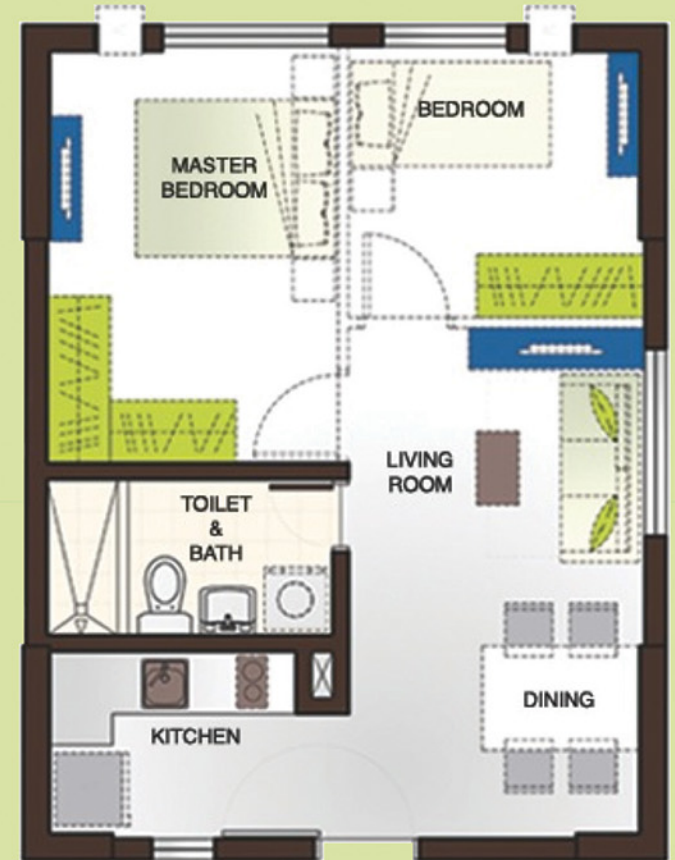




Unitized Floor Plan

Building A

2-Bedroom Unit
Approximately 48 sqm





Unit Features

- Individual meter for water and electricity
- Provision for telephone and cable TV line
- Ventilation for kitchen and toilets
- Provision for water heater at shower area
- Emergency back-up power supply
- Window type aircon opening and electrical outlet
- Automatic smoke detectors and fire alarm with sprinkler in all units
- Entrance panel door with viewer





Particulars	Living/Dining	Bedroom	Kitchen	Toilet and Bath
FLOORS	Concrete slab ready to receive floor finish			Ceramic Tiles
WALLS	Plastered Painted Finish	Plastered Painted Finish (Concrete Walls)	Plastered Painted Finish	Ceramic Tiles (Wet Area); Painted Finish (Dry Area)
CEILING	Painted Concrete with exposed pipes			Moisture-resistant Gypsum Board
DOORS	Panel Door at Main Entry only			Flush Door
WINDOWS	Glass in Aluminum Framing			
FIXTURES			Granite countertop with Kitchen sink and faucet	Basic fixtures with provision for water heater at shower area
OTHERS	Supplied with smoke detectors and sprinkler system			



Unit Deliverables

Building A

Bare unit with finished toilet and bath and kitchen counter



Amenities

Speed up or slow down in **Acacia Escalades'** amenities:

- Lobby
- Kiddie and Adult Pool
- Landscaped Atrium
- Children's Playground
- Function Rooms
- Gym

Ground Floor:

- Robinsons Supermarket
- Retail Spaces





ROBINSONS LAND
RESIDENTIAL DIVISION

We Are Home.

DISCLAIMER: All plans, specifications, and illustrations contained herein are for identification and reference only. While every care has been taken in preparation of this material, all details are subject to change without prior notice and do not constitute part of any offer or contract. The developer does not authorize the person to render any representation or warranty regarding this project. Sales agents are not authorized to make statements outside this material.

ROBINSONS
CommUNITIES
Affordable quality condos



Amenities

Lobby





ROBINSONS LAND
RESIDENTIAL DIVISION

We Are Home.

DISCLAIMER: All plans, specifications, and illustrations contained herein are for identification and reference only. While every care has been taken in preparation of this material, all details are subject to change without prior notice and do not constitute part of any offer or contract. The developer does not authorize the person to render any representation or warranty regarding this project. Sales agents are not authorized to make statements outside this material.

ROBINSONS
CommUNITIES
Affordable quality condos



Amenities

Function Rooms





ROBINSONS LAND
RESIDENTIAL DIVISION

We Are Home.

DISCLAIMER: All plans, specifications, and illustrations contained herein are for identification and reference only. While every care has been taken in preparation of this material, all details are subject to change without prior notice and do not constitute part of any offer or contract. The developer does not authorize the person to render any representation or warranty regarding this project. Sales agents are not authorized to make statements outside this material.

ROBINSONS
CommUNITIES
Affordable quality condos



Amenities

Landscaped Atrium





ROBINSONS LAND
RESIDENTIAL DIVISION

We Are Home.

DISCLAIMER: All plans, specifications, and illustrations contained herein are for identification and reference only. While every care has been taken in preparation of this material, all details are subject to change without prior notice and do not constitute part of any offer or contract. The developer does not authorize the person to render any representation or warranty regarding this project. Sales agents are not authorized to make statements outside this material.

ROBINSONS
CommUNITIES
Affordable quality condos



Amenities

Kiddie and Adult Pool





ROBINSONS LAND
RESIDENTIAL DIVISION

We Are Home.

DISCLAIMER: All plans, specifications, and illustrations contained herein are for identification and reference only. While every care has been taken in preparation of this material, all details are subject to change without prior notice and do not constitute part of any offer or contract. The developer does not authorize the person to render any representation or warranty regarding this project. Sales agents are not authorized to make statements outside this material.

ROBINSONS
CommUNITIES
Affordable quality condos



Amenities

Robinsons Supermarket and Retail Spaces on the Ground Floor





ROBINSONS LAND
RESIDENTIAL DIVISION

We Are Home.

DISCLAIMER: All plans, specifications, and illustrations contained herein are for identification and reference only. While every care has been taken in preparation of this material, all details are subject to change without prior notice and do not constitute part of any offer or contract. The developer does not authorize the person to render any representation or warranty regarding this project. Sales agents are not authorized to make statements outside this material.

ROBINSONS
CommUNITIES
Affordable quality condos



ROBINSONS LAND
CORPORATION

YOUR DREAMS, OUR FOUNDATION.

ACACIA
ESCALADES

Robinsons Land Corporation

Acacia Escalades is a project of Robinsons Land Corporation under its Robinsons Communities brand.

Robinsons Communities is committed in delivering quality and affordably priced homes in a relaxed community setting. It promises to provide homeowners a happy and relaxed way of life by offering open spaces ideal for community get-togethers, fun and functional amenities, complementing facilities and services for neighborhood and household conveniences all in a easily accessible location.

Robinsons Land Corporation is one of the Philippines' reputable real estate developers. It is a company of JG Summit Holdings, Inc., one of the largest conglomerates in the Philippines with interests in manufacturing, airline, real estate, banking, and petrochemicals. Robinsons Land has been a stable developer with businesses in malls, hotels, office buildings, horizontal housing, and residential condominium developments. The company has been awarded by leading international magazine Euromoney for being the Overall Best Managed Company in the Philippines for 2013 and 2014 consecutively. This citation is given to companies that displayed impressive execution of management accessibility, accounting transparency and corporate governance

