

# AMAIA SKIES CUBAO



# Amaia Skies Cubao

Amaia Skies Cubao is a high-rise residential project located at EDSA cor. P. Tuazon, Brgy. Socorro, Cubao, Quezon City.

This integrated mixed-use development has access to the best of everything such as shopping and entertainment center, transport hubs and offices.



# Connect to everything

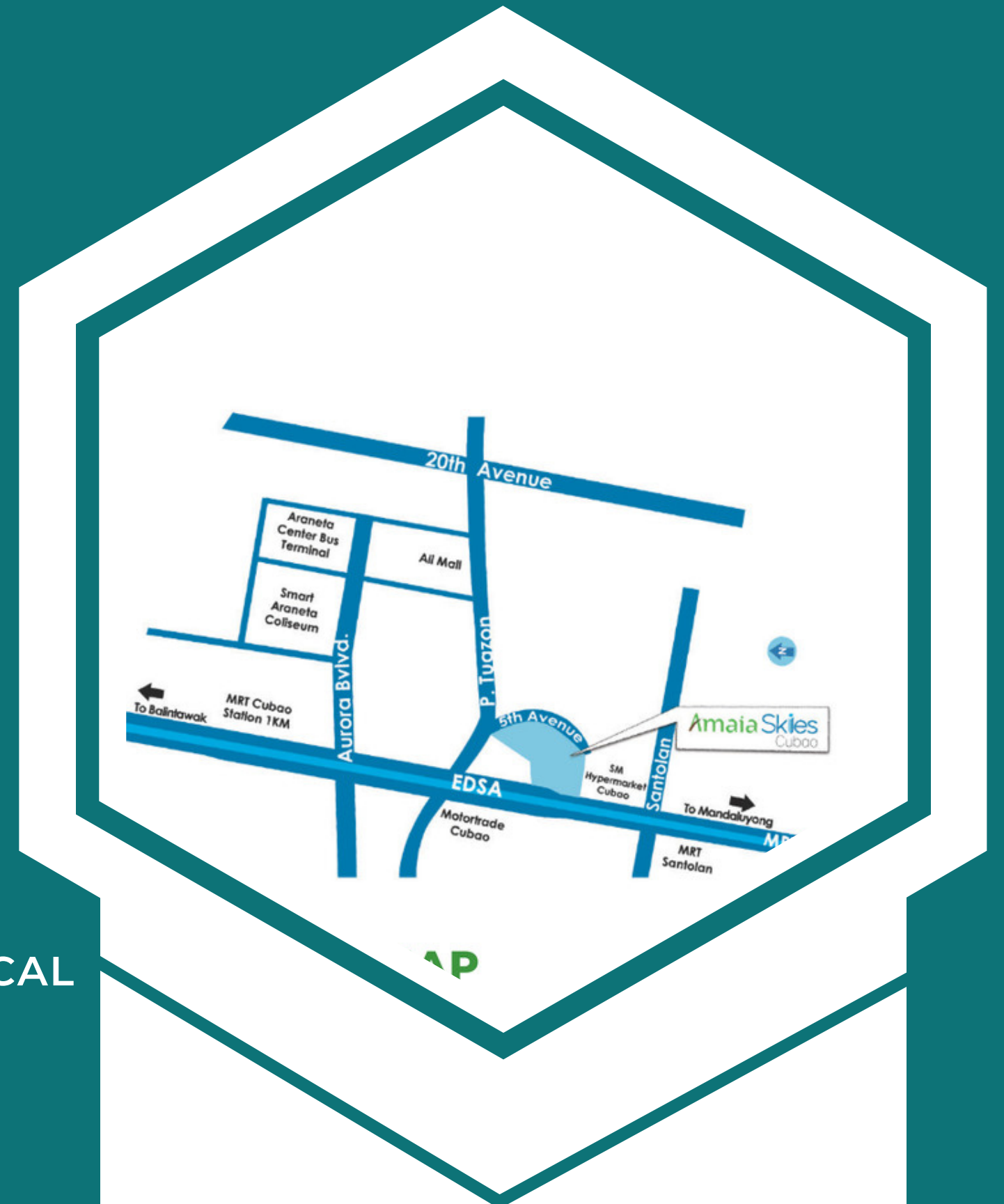
Amaia Skies Cubao is strategically located at EDSA corner P. Tuazon Cubao, Quezon City.

## Main Transport Hub:

- MRT Cubao Station
- LRT-2 Cubao Station
- EDSA Bus Stop

## Around the area:

- Gateway Mall, SM Cubao & Farmers Market
- Ortigas Business District
- Stella Maris College & ABE International Business College
- ST. LUKE'S MEDICAL CENTER & DE LOS SANTOS MEDICAL CENTER
- OUR LADY OF PERPETUAL HELP PARISH





# Site development plan

The entire projects sits on a 1 hectare lot, composed of 3 towers.

## Development Features:

- Main lobby and Elevator per building
- Operational arcaded retail at the ground floor
- LED lights in common area
- Heat reflected roofs and light colored faded
- Complete and fully functional amenities per building
- own access to EDSA via tower 3



# Site development plan

## TOWER 1

- No. of Residential floors: 30
- Total no. of residential units: 1,126
- No. of parking floors: 5

## TOWER 2

- No. of residential floors: 30
- No. of residential units: 1,042
- No. of parking floors: 5



# Home within your reach

At Amaia Skies Cubao, units are designed to suit your functional need for functional living spaces. There are sufficient area for living and dining room, bedroom, bathroom, and kitchen. All units are priced affordably.



# STUDIO UNIT DELIVERABLES



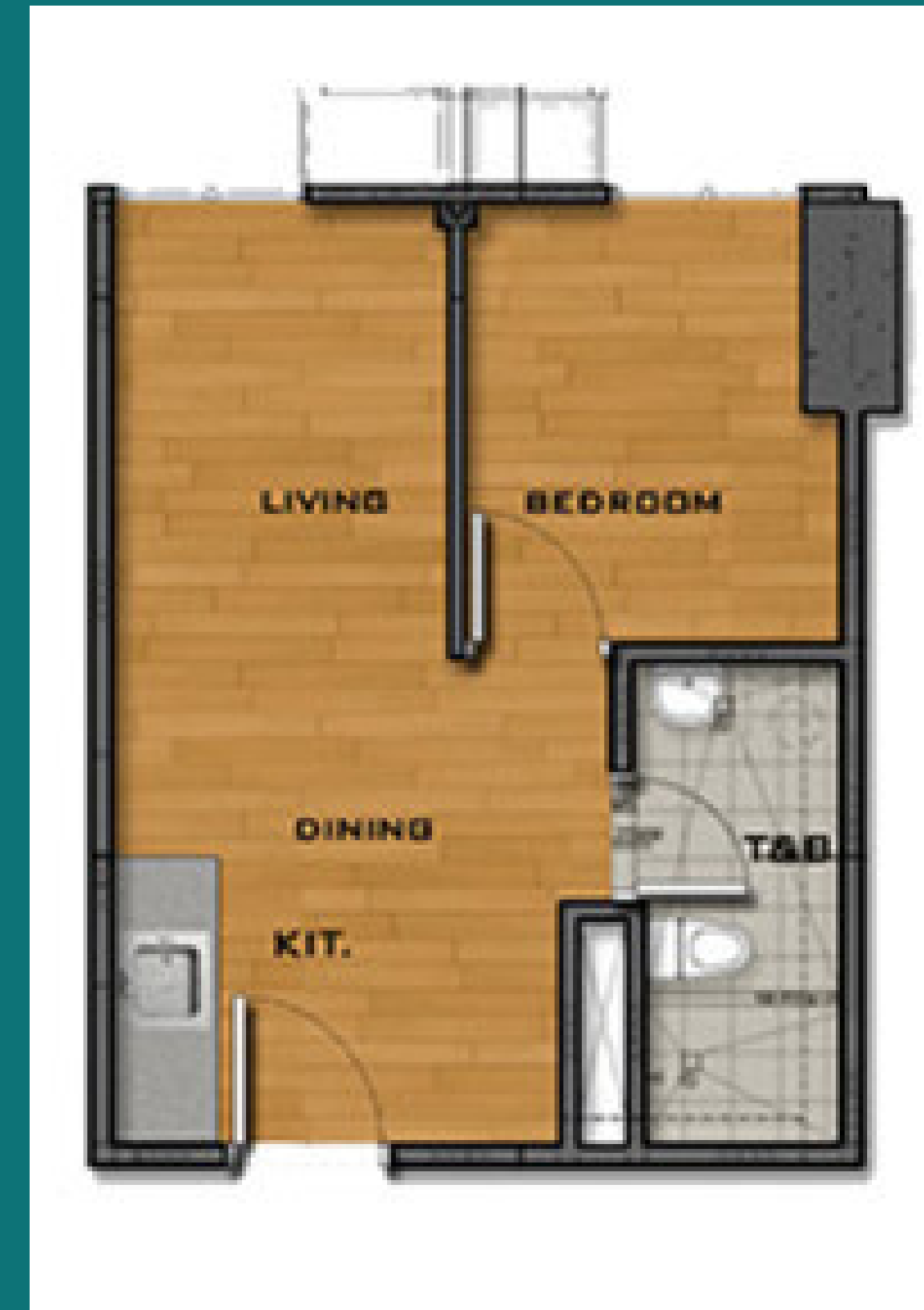
## STUDIO UNIT DELIVERABLES (SPECIFICATIONS)

- Ideal Use** : Best for single occupants
- Deliverable Unit** : Units are telephone and cable ready  
Units are equipped with sprinkler system
- Flooring** : Common hallways: - Vinyl tiles  
Unit - Vinyl tiles  
Toilet and bath - Ceramic tiles
- Walls** : Painted concrete  
Toilet and bath: Ceramic tiles (wet area)  
and painted concrete (dry area)
- Windows** : Aluminum windows
- Kitchen** : Kitchen sink with base
- Toilet and Bath** : Complete toilet and bath fixtures
- In-unit Laundry Area** : Each unit has a provision for washer/dryer  
at the toilet and bath

# 1 BEDROOM UNIT DELIVERABLES

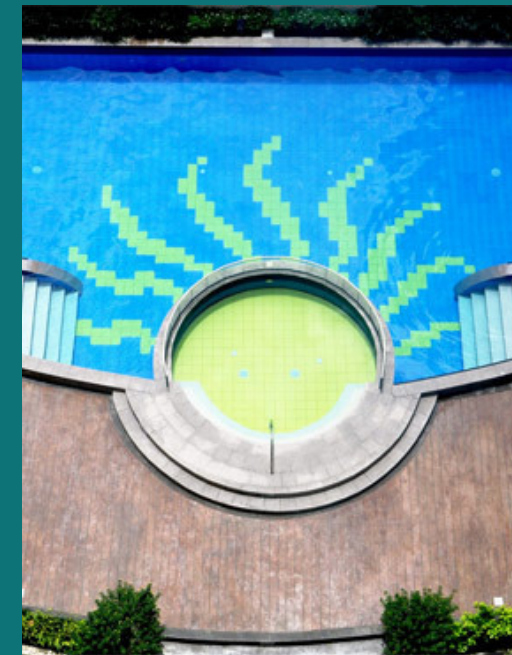
## 1 BEDROOM UNIT DELIVERABLES (SPECIFICATIONS)

- Ideal Use** : Best for newly weds
- Deliverable Unit** : Units are telephone and cable ready  
Units are equipped with sprinkler system
- Flooring** : Common hallways: - Vinyl tiles  
Unit - Vinyl tiles  
Toilet and bath - Ceramic tiles
- Walls** : Painted concrete  
Painted partitions  
Toilet and bath: Ceramic tiles (wet area)  
and painted concrete (dry area)
- Windows** : Aluminum windows
- Kitchen** : Kitchen sink with base
- Toilet and Bath** : Complete toilet and bath fixtures
- In-unit Laundry Area** : Each unit has a provision for washer/dryer  
at the toilet and bath





# Amenities and Facilities





**TOP  
REASON  
TO INVEST**



**PROPERTY APPRECIATION**

**UNBEATABLE LOCATION**

**BRANDED INVESTMENT**

**SPACIOUS LIVING**

**FIRST RATE AMENITIES  
ARCADED RETAIL AREA**

# LEASING POTENTIALS

## STUDIO

UNFURNISHED 10,000-13,000

SEMI-FURNISHED 13,000-18,000

FURNISHED 18,000-23,000

## 1 BEDROOM

UNFURNISHED 13,000-15,000

SEMI-FURNISHED 18,000-23,000

FURNISHED 23,000-30,000



**THANK  
YOU**

**PREPARED BY :  
MAYRITZ BATULA**