



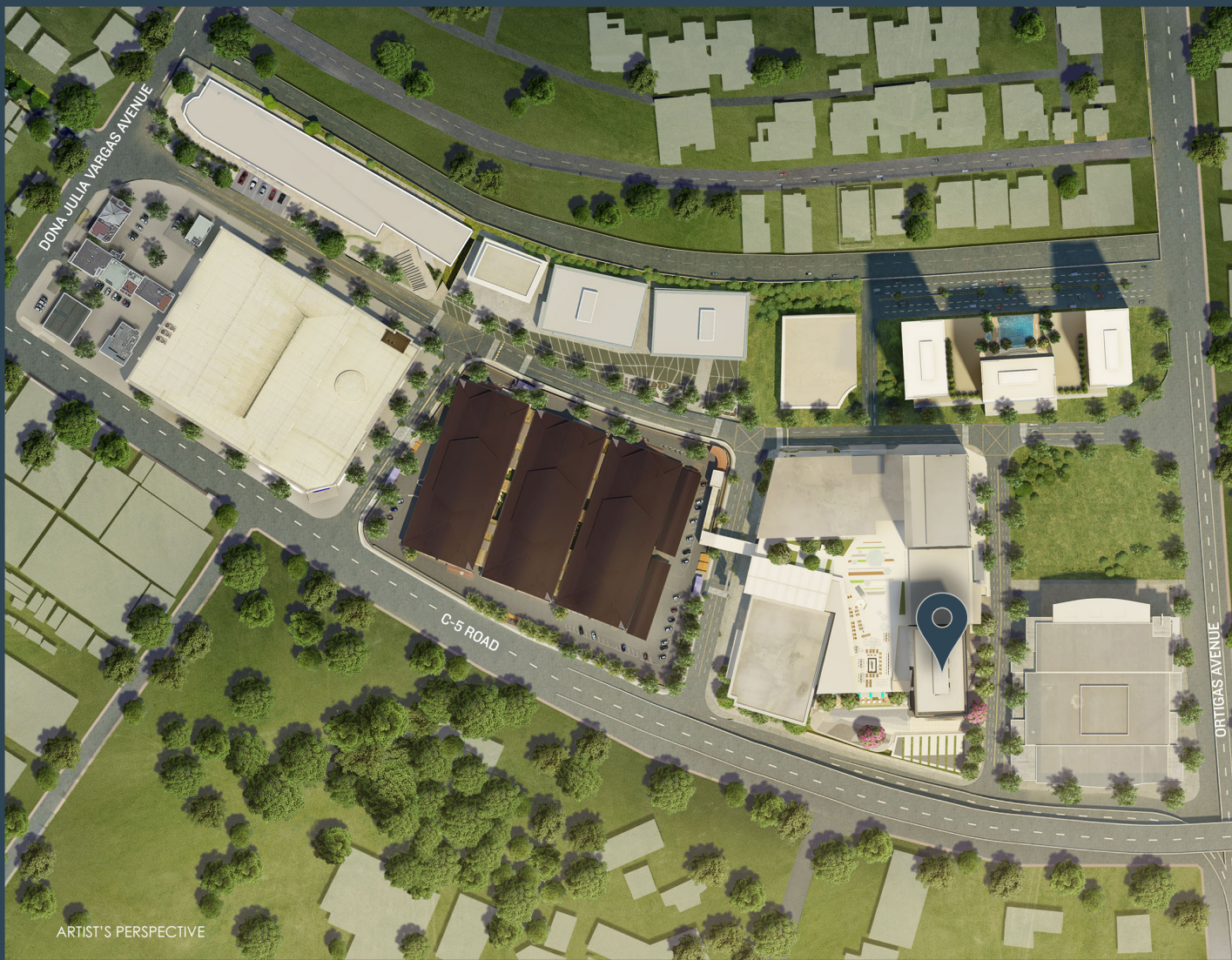
THE  
GLASTON  
TOWER

# THE GLASTON TOWER

The Glaston Tower is a 34-storey office building that is poised to become Metro Manila's next prime business address. It will breathe new life into the office space market with its exquisite form and functionality. It is currently pursuing LEED certification.







ARTIST'S PERSPECTIVE

*ORTIGAS EAST MASTERPLAN*



ARTIST'S PERSPECTIVE

*THE GLASTON TOWER*



# THE GLASTON TOWER

**349 UNITS**  
TOTAL NUMBER OF UNITS

**34 LEVELS**  
TOTAL NUMBER OF STOREYS

**8 LEVELS**  
PODIUM PARKING

**2 LEVEL**  
BASEMENT PARKING

**25 LEVELS**  
OFFICE FLOORS

**15 LIFTS**  
TOTAL NUMBER OF ELEVATORS

**12 LIFTS**  
PASSENGER

**2 LIFTS**  
PARKING

**1 LIFT**  
SERVICE

**UNIT OFFERINGS**

76.88 - 88.88 SQM

100.88 - 123.88 SQM

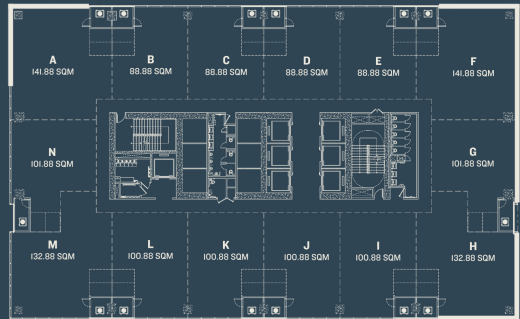
132.88 - 141.88 SQM

HIGH ZONE  
LEVELS  
24 - 36

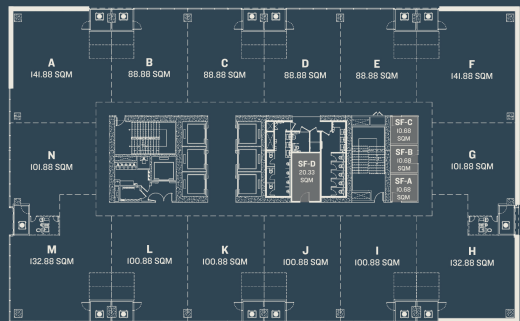
LOW ZONE  
LEVELS  
11 - 23

SKY  
LOBBY

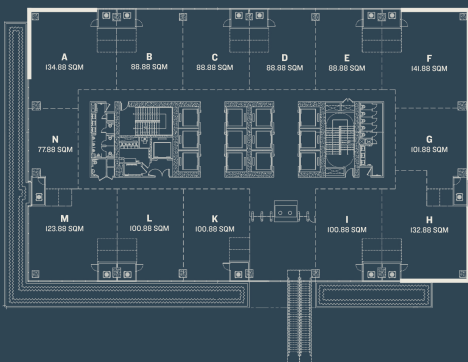
## LEVEL 12 - 23 LOW ZONE FLOOR PLAN



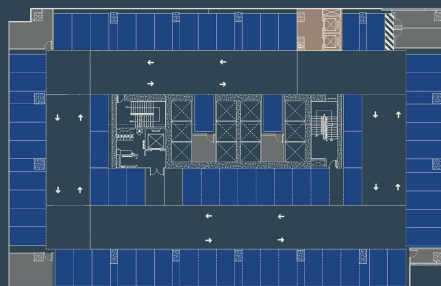
## LEVEL 24 - 36 HIGH ZONE FLOOR PLAN



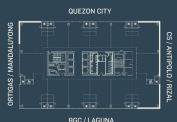
## LEVEL II OFFICE - MALL CONNECTION



## PARKING FLOOR PLAN TYPICAL



- FULL GLASS WINDOW
- ELEVATOR LOBBY
- PARKING SLOTS
- STORAGE FACILITY



\*NO LEVEL 4 AND 13



DEVELOPER	Ortigas & Company
MASTER PLANNING	Callison RTKL
ARCHITECTURAL DESIGN	ASYA Design
STRUCTURAL ENGINEERING	Magnusson Klemencic Associates + ASYA Engineering
STRUCTURAL PEER REVIEW	AIT Solutions
ELECTRICAL ENGINEER	Arquee Corporation
MECHANICAL ENGINEER	Arquee Corporation
PLUMBING & FIRE PROTECTION ENGINEERING	Arquee Corporation
INTERIOR DESIGN	Arquee Corporation
ELEVATOR CONSULTANT	Roy Barry & Associates International Elevator Consultants
WAYFINDING & EGD DESIGN	QASYA Industrial Design
BUILDING INFORMATION MODELLING	ARQUEE Corp.
LEED COMMISSIONING	Flowforth Ventures, Inc.



THE  
GLASTON  
TOWER

Ortigas East, E. Rodriguez Jr. Ave.,  
Brgy. Ugong, Pasig City

**CHARLES HARNER TAN**

**+63 915 787 8812 VIBER / WHATSAPP**

**charlestan.ortigas@gmail.com**

**ORTIGAS EAST**

 **Ortigas & Company**