



THE
ROYALTON
AT CAPITOL COMMONS

THE TOWER

421 UNITS
TOTAL NUMBER OF UNITS

64 FLOORS
TOTAL NUMBER OF STOREYS

3 FLOORS
PODIUM PARKING

5 FLOORS
BASEMENT PARKING

61 FLOORS
RESIDENTIAL

5 LIFTS
TOTAL NUMBER OF ELEVATORS

4 LIFTS
PASSENGER
1 LIFT
SERVICE

UNIT OFFERINGS

STUDIO
1-BEDROOM
2-BEDROOM
3-BEDROOM

AMENITIES

SPACIOUS LOBBY
LANDSCAPED GARDEN DECK
LAP POOL WITH CABANAS
RESIDENTS' LOUNGE
FUNCTION ROOMS
FITNESS CENTER
MAIL ROOM
CONCIERGE
ACCESS TO GROUND LEVEL RETAIL

LEVELS
64, 66, AND 67

HIGH ZONE LEVELS
38 - 65

LOW ZONE LEVELS
6 - 37

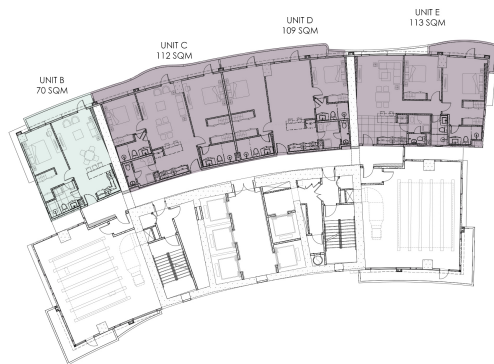
**TYPICAL LOW ZONE LEVEL 6 - 37
(SAMPLE LEVEL 18)**



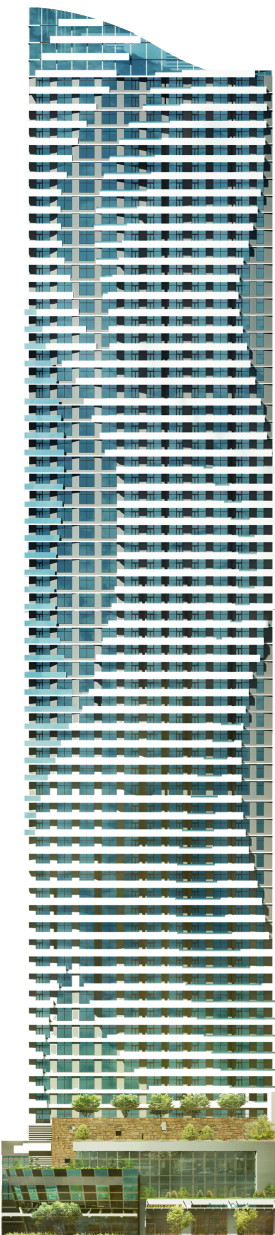
**TYPICAL HIGH ZONE LEVEL 38 - 65
(SAMPLE LEVEL 38)**



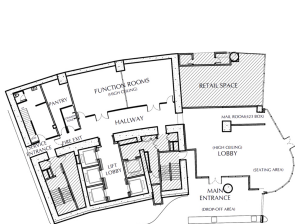
**MECHANICAL FLOOR
LEVEL 48**



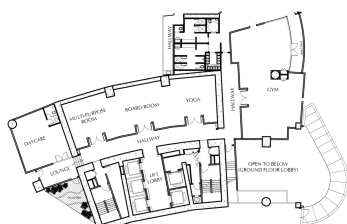
**LEVEL 64, 66, AND 67
(SAMPLE LEVEL 64)**



GENERAL AMENITIES



GROUND LEVEL



2ND LEVEL

THE ROYALTON AT CAPITOL COMMONS

Standing 64 storeys high, this iconic residential masterpiece exudes both beauty and function. It is designed to capture your eyes with its sinuous curves seeming to float and flow with the wind. The curves are the balconies of every residential unit bringing in fresh air while blocking the heat from the afternoon sun.

The Royalton is located in Capitol Commons, the newest urban destination that features 10 hectares of prime office, commercial, and residential developments with 50% of its area dedicated to open spaces.



0.13km away from Valle Verde Country Club



ARTIST'S PERSPECTIVE

CAPITOL COMMONS MASTERPLAN



ARTIST'S PERSPECTIVE

THE ROYALTON TOWER

DEVELOPER	Ortigas & Company
DESIGN CONSULTANT	CallisonRTKL
ARCHITECT OF RECORD	GF & Partners, Architect
STRUCTURAL CONSULTANT	Magnusson Klemencic Associates
STRUCTURAL ENGINEER	Pimentel & Associates Engineering Consultants
ELECTRICAL ENGINEER	E.B. Cruz & Partners Electrical Engineering
MECHANICAL ENGINEER	Thermal Solutions, Inc.
SANITARY & PLUMBING ENGINEER	Mendoza Engineering
FIRE PROTECTION ENGINEER	Oscar Roque Engineering
ELEVATOR CONSULTANT	Roy Barry & Associates International Elevator Consultants
QUANTITY SURVEYOR	Arcadis Philippines, Inc.
INTERIOR DESIGNER	Arlen P. De Guzman Designs Associates Co.
PROJECT MANAGER	Amcon & Company, Inc.
GEOMANCER	Sy Kim Ho



**THE
ROYALTON**
AT CAPITOL COMMONS

Capitol Commons, Meralco Avenue
Ortigas Center, Pasig City

www.ortigas.com.ph

HLURB LS NO. 033338
AA No. HLURB ENCR AA-2018/02-2025
Developer: Ortigas & Company
Target Date of Completion: 31 December 2019

