



## Estate Updates

As of March 1, 2023



Ayala Land's flagship and largest sustainable estate at **2,400 hectares**.

NUVALI is built upon three sustainability fronts. This is the guiding philosophy we recognize as a developer and an organization.

### ECONOMIC SUSTAINABILITY

Solid underpinnings for future economic growth

### ENVIRONMENTAL SUSTAINABILITY

Nature at its best; an environment preserved for the ages.

### SOCIAL SUSTAINABILITY

A living and breathing community

# STRATEGIC LOCATION



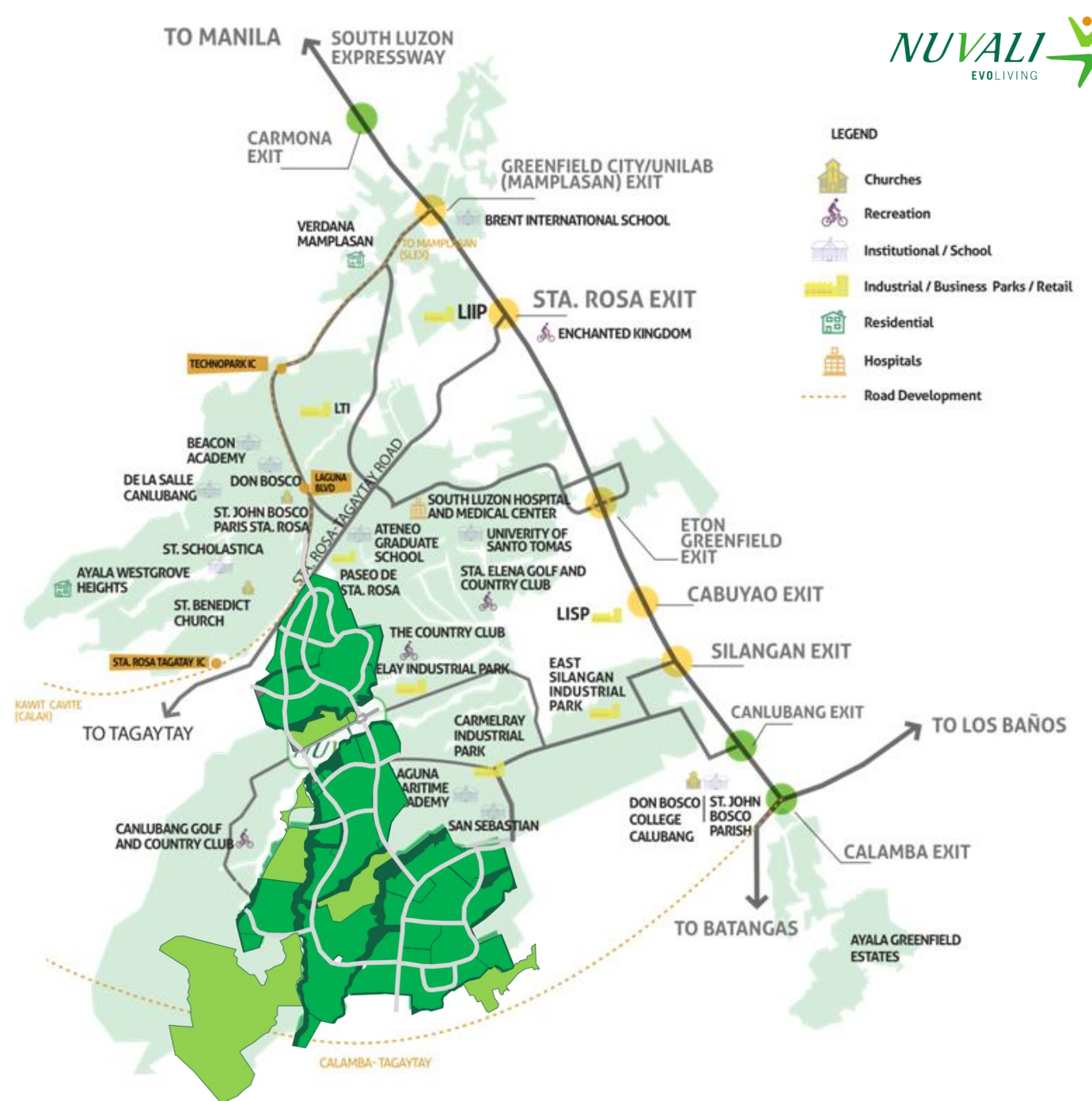
## VIA PRIVATE VEHICLE

- SLEX
- NAIA (45 km)
- Makati CBD (44 km)
- BGC (44 km)
- Alabang (27 km)

- Kawit, Cavite (45 KM)
- CALAX -SRTR Interchange (1 km)
- CALAX - Laguna Boulevard (1 km)

## VIA PUBLIC TRANSPORT (P2P)

- Makati - NUVALI - Makati



# INTEGRATED MASTERPLAN



 Business Districts  
(Offices, Retail, Hotel,)

 Residential



 Institutions  
(School, hospital)

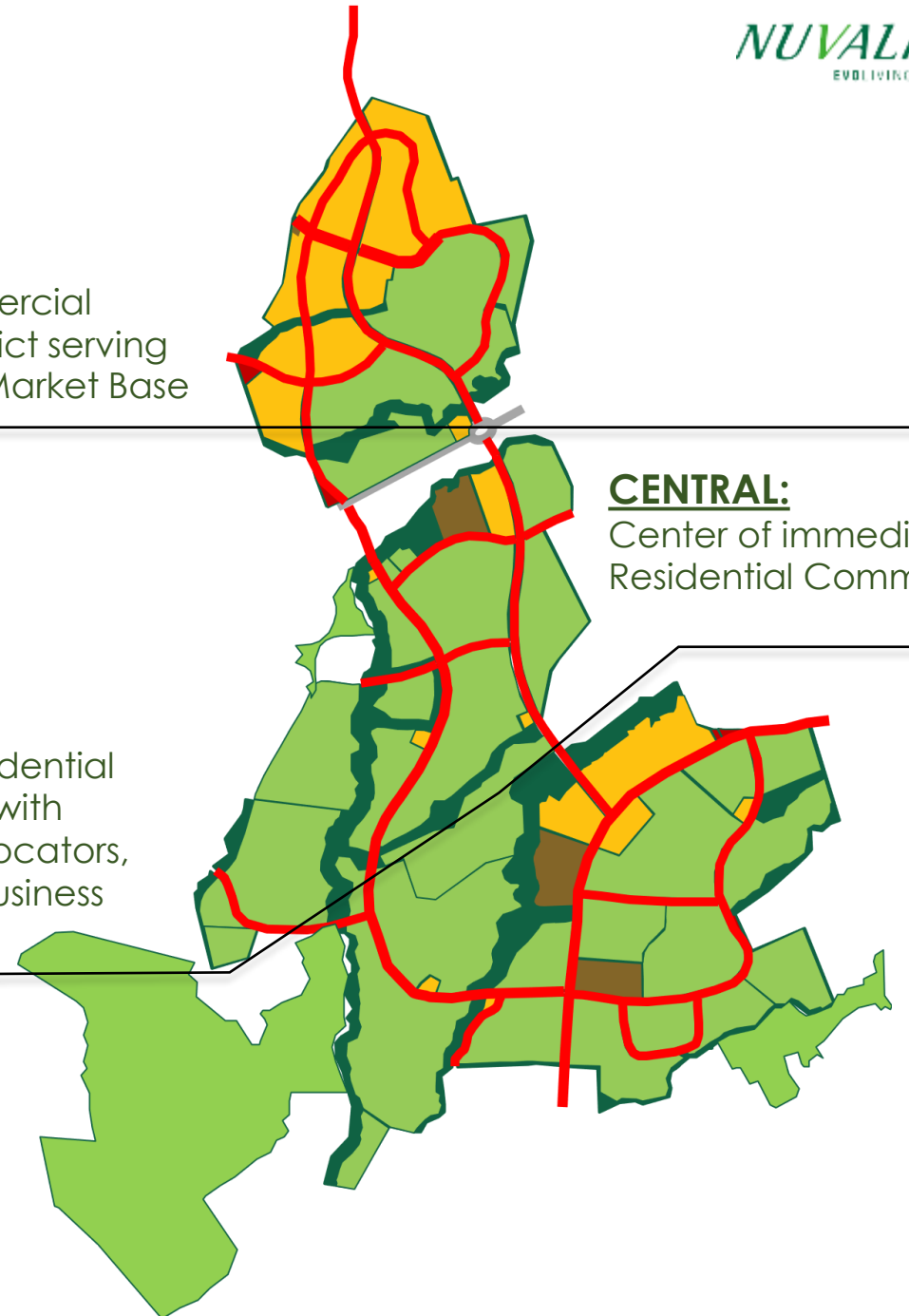
 Open Spaces

 Estate Infrastructure  
(Road work and Utilities)

**NORTH:**  
Main Commercial  
Business District serving  
a Regional Market Base

**CENTRAL:**  
Center of immediate  
Residential Community

**SOUTH:**  
Growing Residential  
Community, with  
Institutional Locators,  
and Future Business  
District



# RESIDENTIAL DEVELOPMENTS



**25** Residential Villages  
**2** Mid-Rise Condo Projects  
**16,000** Units Sold (98%)  
**11,000** Current Residents



**10** Residential Villages



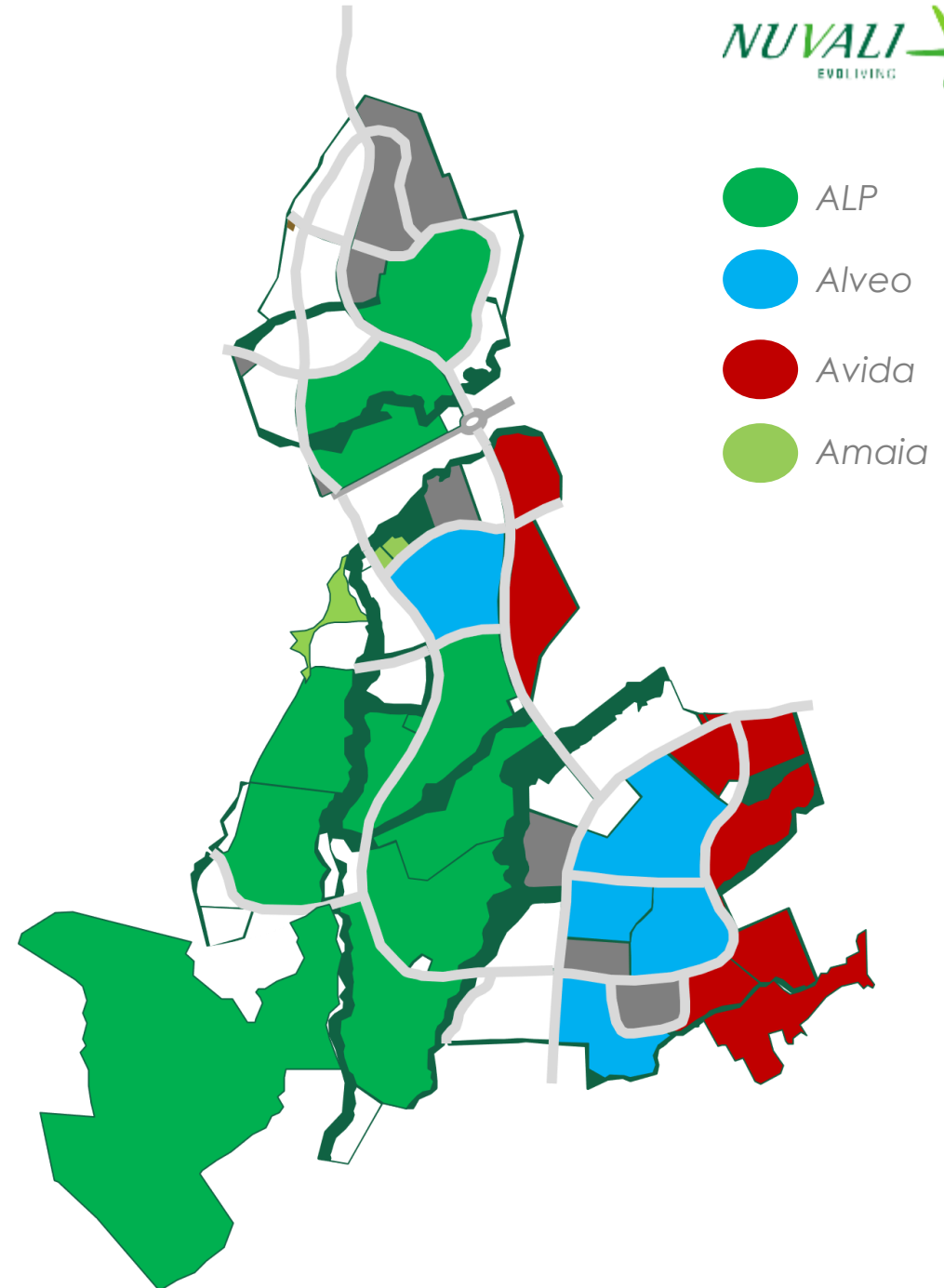
**5** Residential Villages



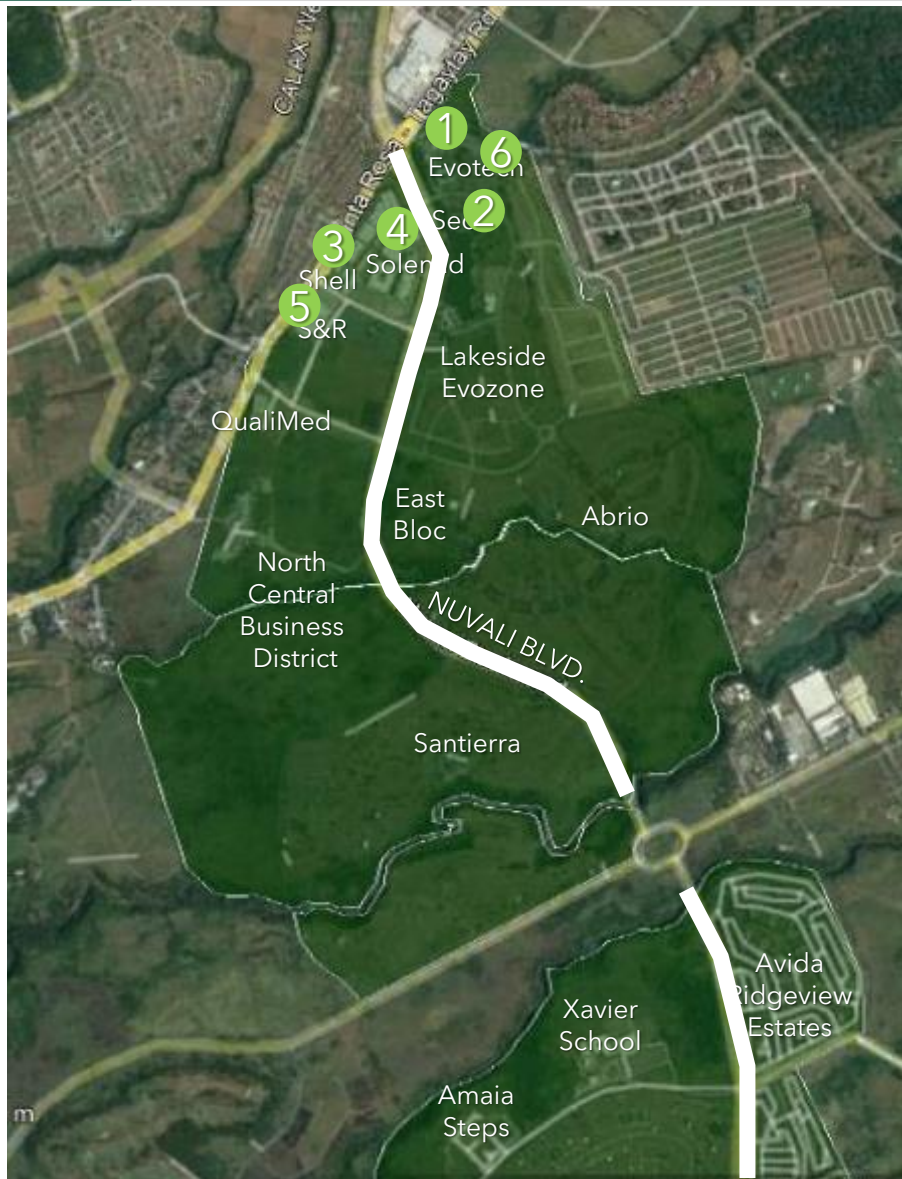
**9** Residential Villages



**2** Mid-Rise Condo Projects  
**1** Townhouse Subdivision



# NUVALI NORTH: COMMERCIAL DEVELOPMENTS



Solenad 1



Seda



Nuvali Terminal



AyalaMalls Solenad 2 & 3

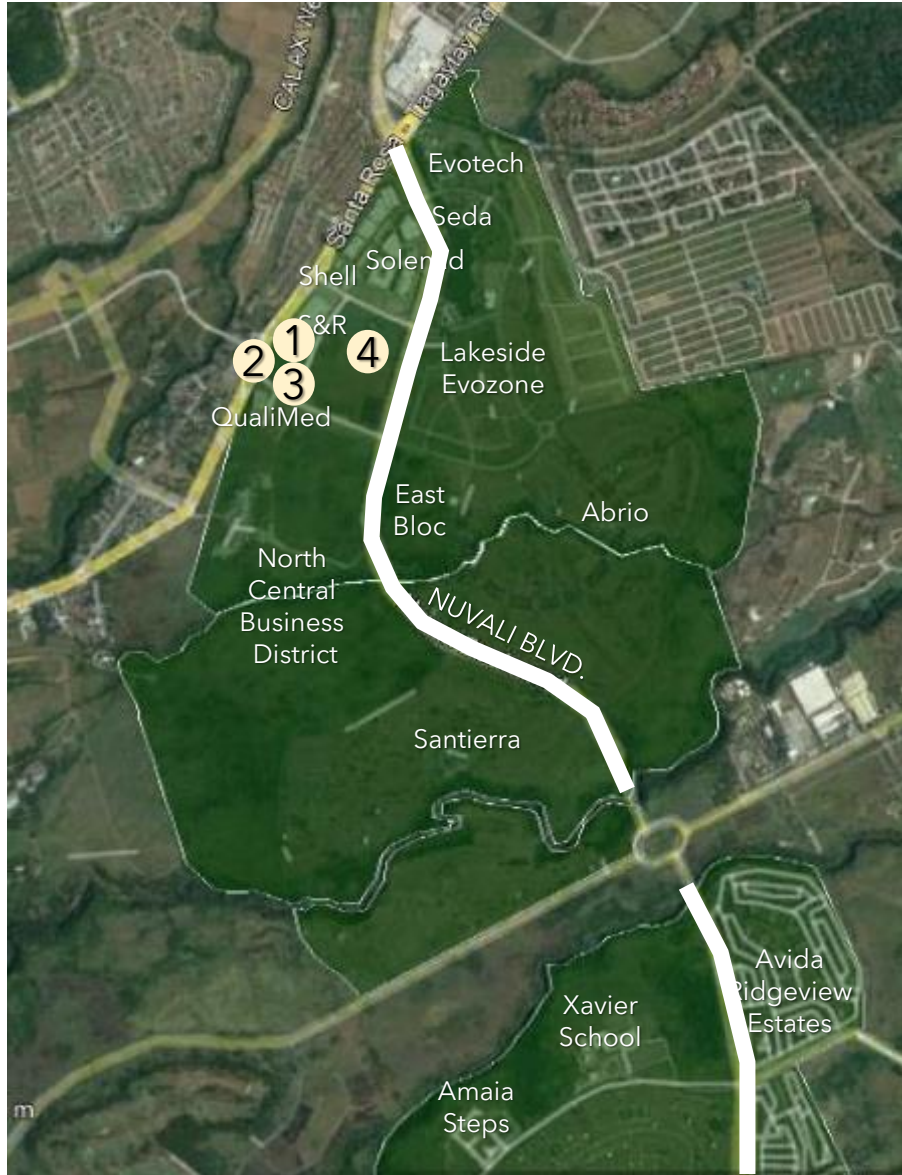


S&R



Evotech 1 & 2

# NUVALI NORTH: NEW LOCATORS



## NEW LOCATORS

1. Uniqlo - November 2022



2. McDonald's - December 2023



## UPCOMING LOCATORS

3. Coffee Bean - May 2023



As of March 1, 2023

4. Landers - June 2023



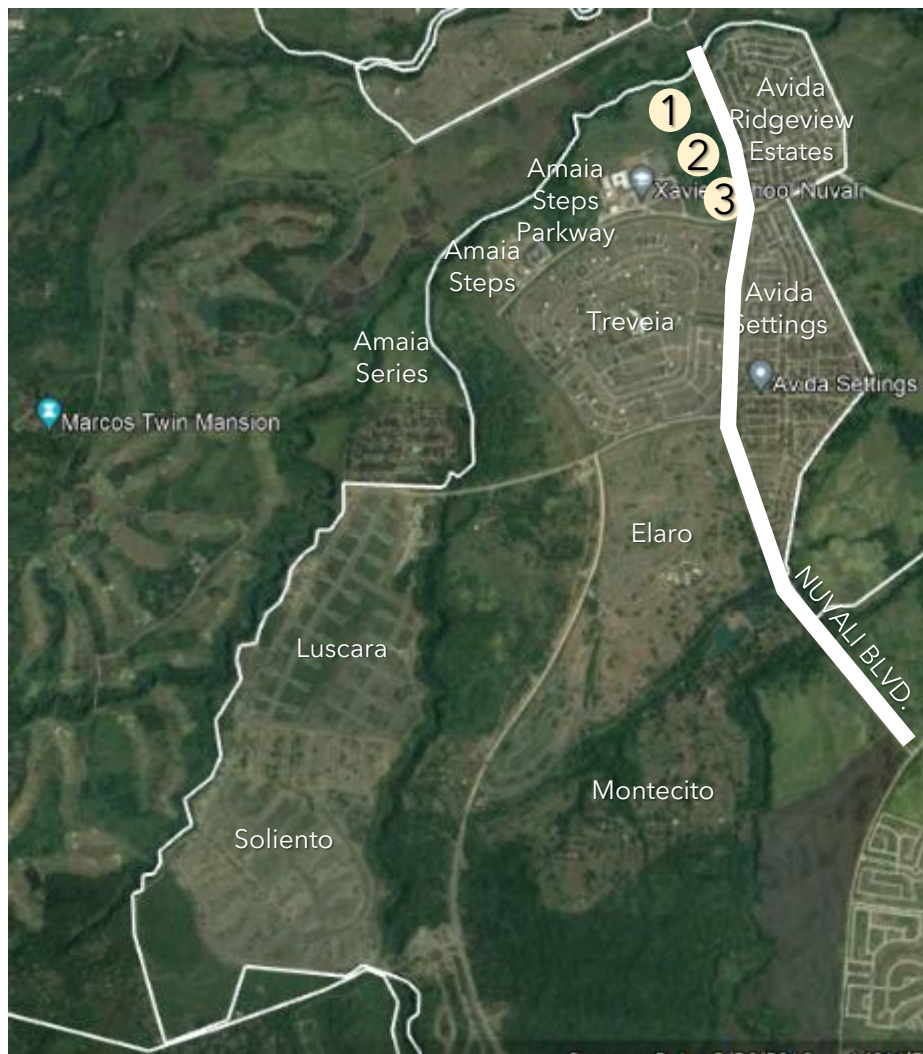
As of March 1, 2023

# NUVALI CENTRAL: NEW LOCATORS



## LAUNCHED COMMERCIAL DISTRICT

1. Central Bloc Nuvali - October 2022



## UPCOMING LOCATORS

3. Merrymart - 1Q 2024

4. The Shops - 1Q 2024





# NUVALI SOUTH: NEW LOCATORS



## UPCOMING LOCATORS

1. PlayParks - 1H 2024



Thank you.

