

P A R K E A S T
P L A C E

**DO YOU WANT TO KNOW MORE
ABOUT PARK EAST PLACE BGC BY
ALVEO AYALA LAND ?**

**SAMPLE PAYMENT TERMS AND
AVAILABLE UNITS?**

**INQUIRE TODAY
SCHEDULE A SHOWROOM VISIT
MEET ME IN ZOOM
CHAT ON FACEBOOK
CALL ME !**



+63-961-380-8568

VIBER OR WHATSAPP



+63-961-380-8568

VIBER OR WHATSAPP

PARK EAST PLACE | BGC

PARK EAST PLACE

Prime Central Living in BGC's Main Avenue

Development Summary

Project Name	Park East Place
Address	32nd Street cor. 9th Avenue, Bonifacio Global City, Taguig City
Project Developer	Fort Bonifacio Development Corporation (FBDC)
Project Manager & Marketing Agent	Alveo Land Corp.
Development Type	A stand-alone high-rise residential condominium built within BGC's city-center.

Alveo's latest residential development offers a refined living experience within a prominent BGC address

Strategically located in a revitalized sub-neighborhood, right at the prominent crossroads of 32nd Street's corporate row and 9th Avenue's lifestyle corridor

- Premium and elegant architecture that creates a distinct character
- An exclusive mix of thoughtfully-designed units with upgraded finishes

Carefully curated amenities that complement an unmatched residential setting



Artist's Perspective

+63-961-380-8568

VIBER OR WHATSAPP

PARK EAST PLACE | BGC

PARK EAST PLACE Vicinity Map

Right at the center of a dynamic green urban community where choices are multiple, pathways intersect where natural and urban spaces meet.

Strategically located in a revitalized neighborhood, Park East Place offers superior access to the very best for work, lifestyle, leisure, corporate, education and cultural experiences.



ALVEO

+63-961-380-8568

VIBER OR WHATSAPP

PARK EAST PLACE | BGC

GENERAL INFORMATION

Park East Place

No. of Floors	59 Physical floors		
No. of Units	523 units		
No. of Units per Floor	Amenity Floor		3 units
	Typical Residential Floor		10 units
	Penthouse Floor		10 units
No. of Parking Floors	3 Basement Parking, 5 Podium		
Number of Elevators	Parking 5 elevators		
Floor-to-ceiling Height (Residential Floors)	Approx. 2.7 m (2.3 m for toilets & kitchens)		
Hallway Width	Approx. 1.5 m		
Elevator Lobby Width	Approx. 3.0 m		

Building Features

Ground floor lobby

Interior-designed lobbies
and select common areas

Mail room

Allocated emergency load for residential units
in case of power outage

Fire detection, alarm and sprinkler system

Two (2) Fire Exits per residential floor

24-hour building security

CCTV cameras in selected areas

RFID for parking and select common areas

24-hour building maintenance

Sustainable Features

Green Building Code compliant

Maximized natural lighting

Low-energy consumption lighting fixtures in common
areas Naturally ventilated elevator lobbies and hallways

Rainwater harvesting system

Dual-flush toilets

Low-flow valves

ALVEO

+63-961-380-8568

VIBER OR WHATSAPP

PARK EAST PLACE | BGC

PARK EAST PLACE Amenities

Presenting amenities that complement evolving lifestyles and workstyles, Park East Place features shared spaces that culminate comfort, ease, and class amid a vitalizing city life.

Indoor Amenities

- A Ground Floor Residential Lounge
- B 7th Floor Residential Lounge
- C Gym
- D Function Room
- E Indoor Play Area

Outdoor Amenities

- A Residential Drop-off Lounge
- B 7th Floor Outdoor Lounge
- C 25m Lap Pool
- D Lounge Pool
- E Kiddie Pool
- F Pavilion
- G Outdoor Play Area



Artist's Perspective

ALVEO

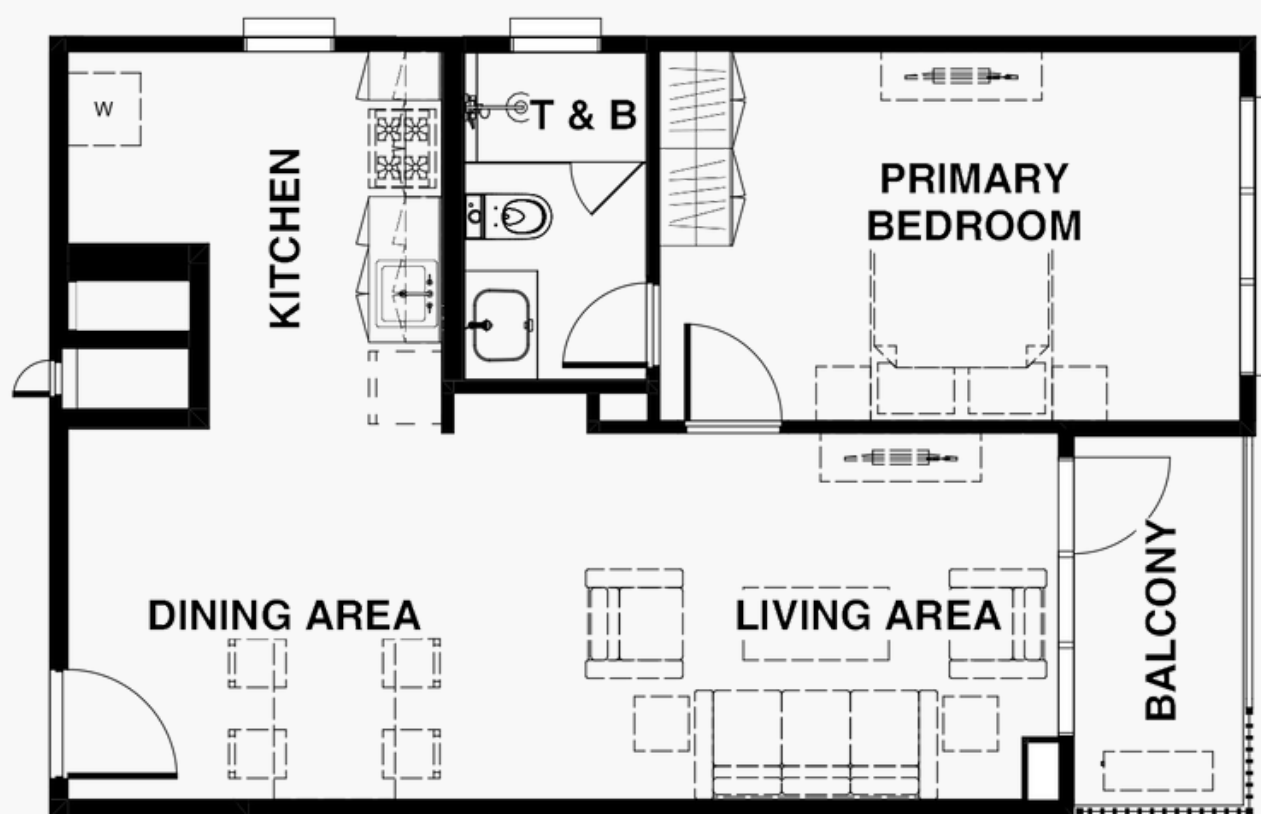
+63-961-380-8568

VIBER OR WHATSAPP

PARK EAST PLACE | BGC

UNIT OFFERINGS

Park East Place | One-Bedroom



*Approximate sizes only	sq.m.	sq.ft.
Primary Bedroom	15	161
Primary T&B	5	51
Living/Dining Area	27	288
Kitchen	9	96
Balcony	5	51
Total Area w/o BALC	56	596
Total Area w/ BALC	61	647

ALVEO

Architect's Layout
The typical unit plans reflect the suggested furniture layouts.

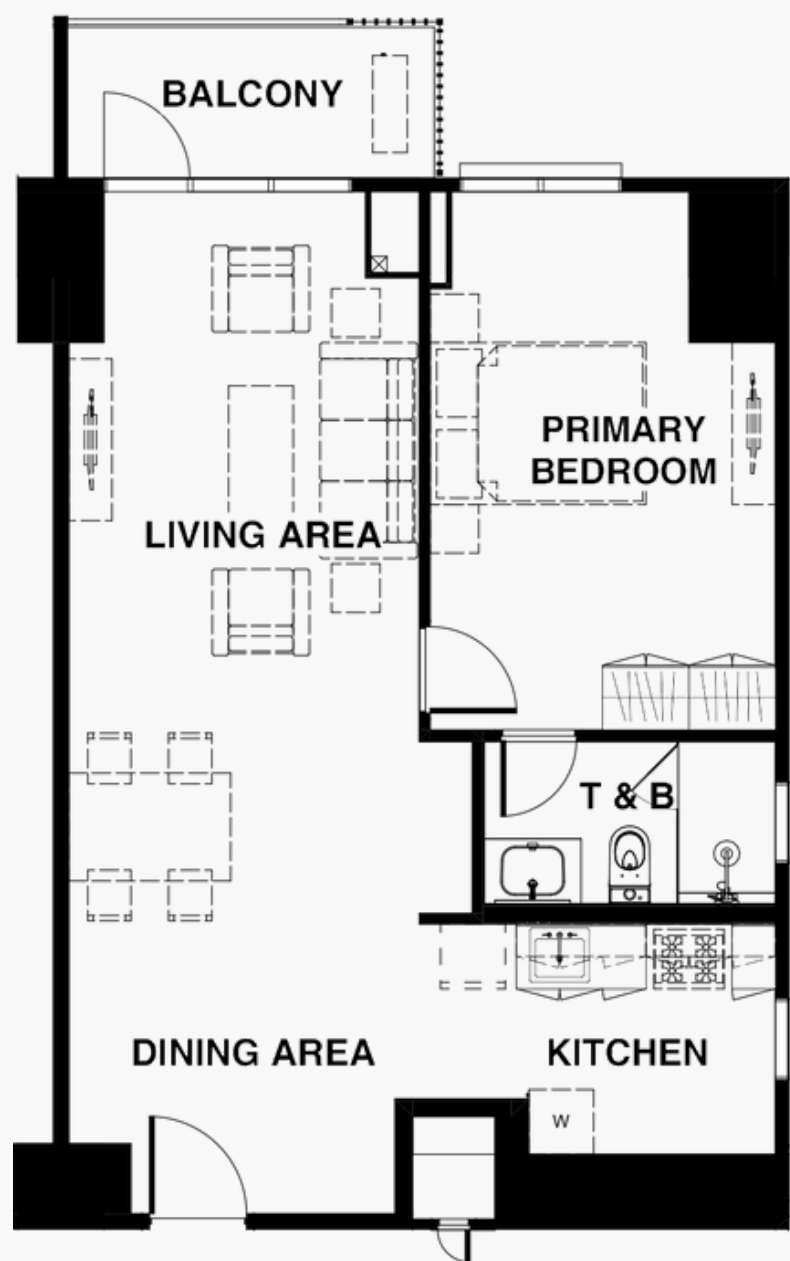
+63-961-380-8568

VIBER OR WHATSAPP

PARK EAST PLACE | BGC

UNIT OFFERINGS

Park East Place | One-Bedroom Suite



*Approximate sizes only	sq.m.	sq.ft.
Primary Bedroom	17	182
Primary T&B	5	50
Living/Dining Area	33	355
Kitchen	7	79
Balcony	5	57
Total Area w/o BALC	62	666
Total Area w/ BALC	67	723

ALVEO

Architect's Layout
The typical unit plans reflect the suggested furniture layouts.

+63-961-380-8568

VIBER OR WHATSAPP

PARK EAST PLACE | BGC

PARK EAST PLACE Consultants

Park East Place is set to provide its residents with a prime living experience, executed by renowned designers and management firms.

MASTERPLAN SmithGroup

SmithGroup is an international architectural, engineering and planning firm. Established in 1853 by architect Sheldon Smith, SmithGroup is the longest continually operating architecture and engineering firm in the United States that is not a wholly owned subsidiary.

ARCHITECTURAL DESIGN Aidea Philippines, Inc.

A global integrated design and technology firm recognized as the top architectural firm in the Philippines by BCI Asia, also ranking 44th by the Building Design 2021 World Architecture 100.

LANDSCAPE DESIGN Inspira Design Core Inc.

Inspira Design Core is a consulting firm established in 2006, dedicated to provide planning and design services specific to landscape architecture and environmental design.

STRUCTURAL DESIGN Sy² + Associates

The leading structural engineering design company based in the Philippines that specializes in global high-rise structures

COMMON AREA INTERIOR DESIGN Design HQ (Hirayama + Quesada)

An interior design firm with over 15 years of experience in creative design, Design HQ focuses on hotels, restaurants, lobbies and amenities, model units, and bespoke homes.

MECHANICAL, ELECTRICAL, FIRE PROTECTION, SANITARY, AND PLUMBING DESIGN

LIFT CONSULTANT Meinhardt Philippines, Inc.

Meinhardt Group has had a presence in the Philippines since the 1980s, providing clients with the full spectrum of engineering consultancy services.

LIGHTING CONSULTANT Light Plan Inc.

A full service lighting design consultancy company in the Philippines established in 2010

PROJECT MANAGEMENT Design Coordinates Inc.

A founding member of the Construction Project Management Association of the Philippines (CPMAP), DCI is the leading domestic company in Construction Project Management.

GENERAL CONTRACTOR Makati Development Corp.

Ayala Land's own construction arm is the largest and one of the most advanced EPC/CM companies in the Philippines, spanning more than 40 years of experience.

PROPERTY MANAGEMENT Ayala Property Management Corp.

A wholly owned subsidiary of Ayala Land engaged in integrated property management services including building administration and maintenance, lease administration activities, commercial center and subdivision maintenance, and special technical services.

ALVEO

+63-961-380-8568

VIBER OR WHATSAPP

PARK EAST PLACE | BGC

PARK EAST PLACE

At the heart of contemporary urban living

A rare investment opportunity to own a prestigious BGC address

Step into the exceptional. Bonifacio Global City, already rich in culture and brimming with life, is primed to embrace an elegant architectural structure that establishes a new standard for sophisticated urban living.

On the corner of 32nd Street and 9th Avenue, Alveo Land emerges with residences that are part of a thoughtfully planned nexus of retail, restaurant, cultural and work spaces shaping the vibrant diversity of the city. Park East Place invites you to enjoy a completely integrated urban lifestyle experience with its unrivalled connectivity and convenience.



Artist's Perspective

ALVEO