

The Lines From SLSM 21, Cad-117, SARIAYA CADASTRE TO CORNER:

LOTS	BEARINGS	DISTANCES
8075	S 63° 42' E	807.35 M
6185-81	S 53° 59' E	771.28 "
6185-82	S 32° 59' E	771.28 "
6185-83	S 57° 45' E	780.29 "
6185-84	S 37° 45' E	780.29 "
6185-85	S 59° 42' E	786.40 "
6185-86	S 62° 33' E	797.17 "
6185-87	S 62° 33' E	797.17 "
6185-88	S 63° 42' E	807.35 "

LOT 6185-B-1			
1	2	S 44° 09' W	48.31 M
2	3	N 6° 18' W	50.72 "
3	4	N 12° 55' E	18.88 "
4	1	S 45° 42' E	48.90 "

LOT 6185-B-2			
1	2	N 45° 42' W	48.90 M
2	3	N 12° 55' E	28.05 "
3	4	S 45° 32' E	63.44 "
4	1	S 44° 09' W	23.76 "

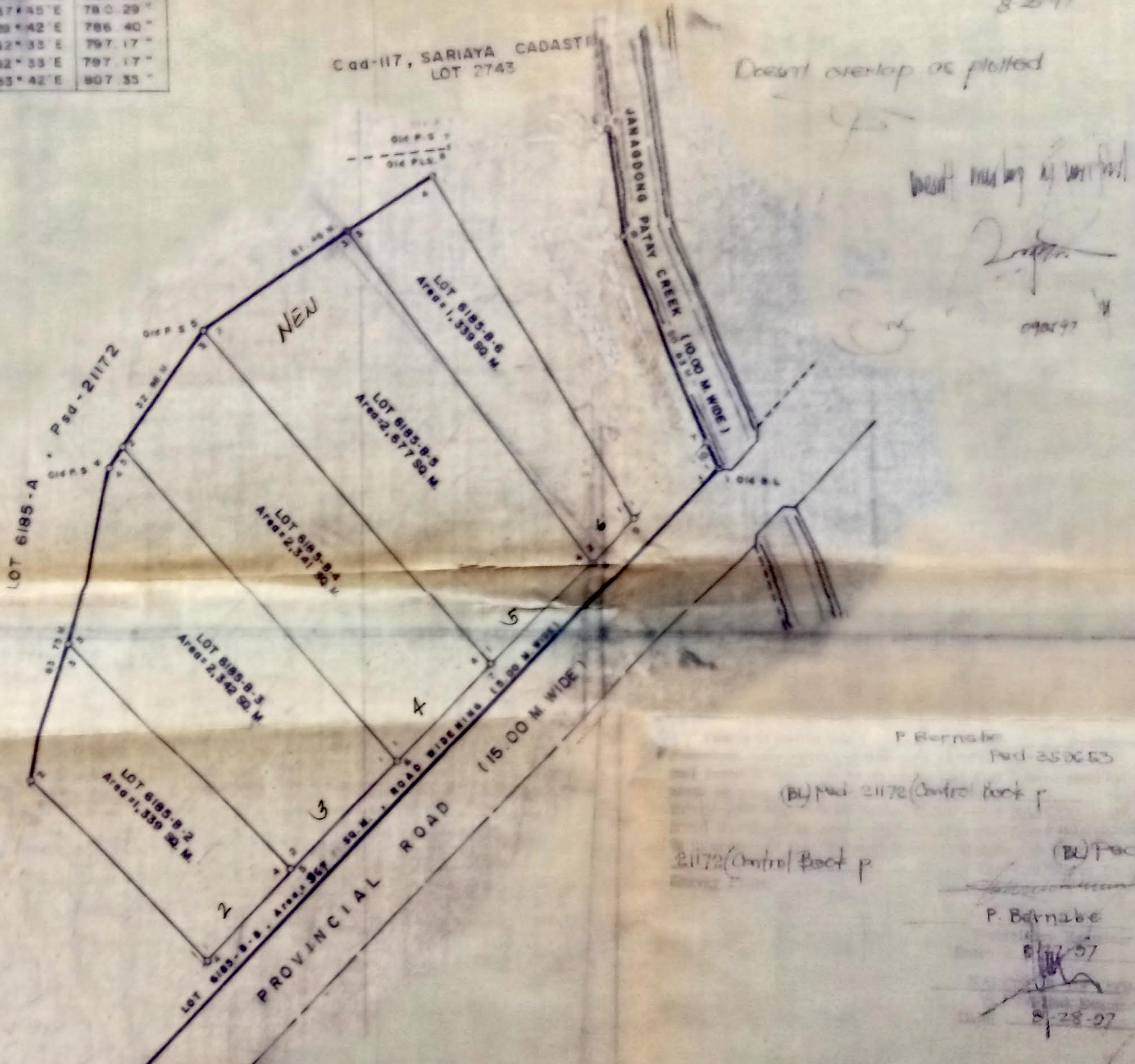
LOT 6185-B-3			
1	2	S 44° 09' W	28.00 M
2	3	N 45° 32' W	63.44 "
3	4	N 12° 55' E	36.80 "
4	5	N 38° 00' E	4.73 "
5	1	S 40° 01' E	83.63 "

LOT 6185-B-4			
1	2	N 40° 01' W	83.63 M
2	3	N 38° 00' E	28.25 "
3	4	S 39° 55' E	87.67 "
4	1	S 44° 09' W	27.40 "

LOT 6185-B-5			
1	2	N 39° 55' W	87.67 M
2	3	N 54° 44' E	34.67 "
3	4	S 38° 48' E	62.09 "
4	1	S 44° 09' W	28.76 "

LOT 6185-B-6			
1	2	S 44° 09' W	12.15 M
2	3	N 38° 45' W	82.09 "
3	4	N 54° 44' E	28.23 "
4	1	S 29° 08' E	80.32 "

LOT 6185-B-7			
1	2	S 44° 09' W	12.15 M
2	3	N 38° 45' W	82.09 "
3	4	N 54° 44' E	28.23 "
4	1	S 29° 08' E	80.32 "



NOTE:
All corners marked Old P.S., Old B.L. & Old PLS. are cyl. conc. mons. 15X60 cm.
All corners not otherwise described are P.S. cyl. conc. mons. 15X60 cm.

P. Bernabe
Pd. 350653

(BU) Pd. 21172 (Control Book P)

21172 (Control Book P)

(BU) Pd. 21172

P. Bernabe
8/28/97

PLAN

DEVELOPER: SURVEY MADE FOR
NORMA AMARILLAS
OF LOT 6185-B, Pd-21172
DESCRIBED IN T-12966
NORMA AMARILLAS

SITUATED IN THE
MUNICIPALITY OF SAMPALOC
PROVINCE OF QUEZON
ISLAND OF LUZON

Containing an Area of **14,352** Sq. M.
BEARINGS TRUE - Decl. 0° 58' E
SCALE: 1:800

I certify that this is a correct and true copy of the plan as shown to me by the owner of the land, and that the same has been approved by the Provincial Engineer, Quezon Province, and the Provincial Engineer, Luzon, and that the same is in accordance with the laws and regulations governing the registration of land in the Philippines.

JUNE 26, 1997

EDILBERTO O. ABRI
PROVINCIAL ENGINEER
Quezon Province
OFFICE NO. 6334028

PROVINCIAL SURVEYOR: JAN 1917 - JAN 1921

Department of Justice
LRA Complex
Seal: 9

Approved pursuant to PD
Date of approval: Sept 22 97

0671115