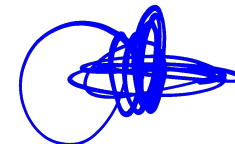




VICINITY MAP



*NOTE :
THE PRESENTATIONS IN THIS PLAN ARE IN ACCORDANCE WITH THE PRESENT PLANS. THE DEVELOPER SHALL EXERT BEST EFFORTS TO CONFORM WITH THE DEVELOPMENT PLANS AND PROSPECTIVE USES ILLUSTRATED, BUT THESE MAYBE SUBJECT TO REVISIONS AND AMENDMENTS WITHOUT PRIOR NOTICE.

VERSION: SH-FTO-210803-VM

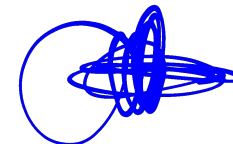




AREA OF DEVELOPMENT: 23,258.05 SQ.M.



SITE DEVELOPMENT PLAN



*NOTE :
THE PRESENTATIONS IN THIS PLAN ARE IN ACCORDANCE
WITH THE PRESENT PLANS. THE DEVELOPER SHALL EXERT
BEST EFFORTS TO CONFORM WITH THE DEVELOPMENT PLANS
AND PROSPECTIVE USES ILLUSTRATED, BUT THESE MAYBE
SUBJECT TO REVISIONS AND AMENDMENTS WITHOUT PRIOR
NOTICE.

VERSION: SH-FT0-210819-SDP

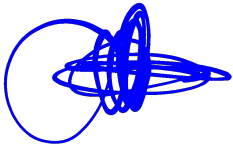


KEY MAP

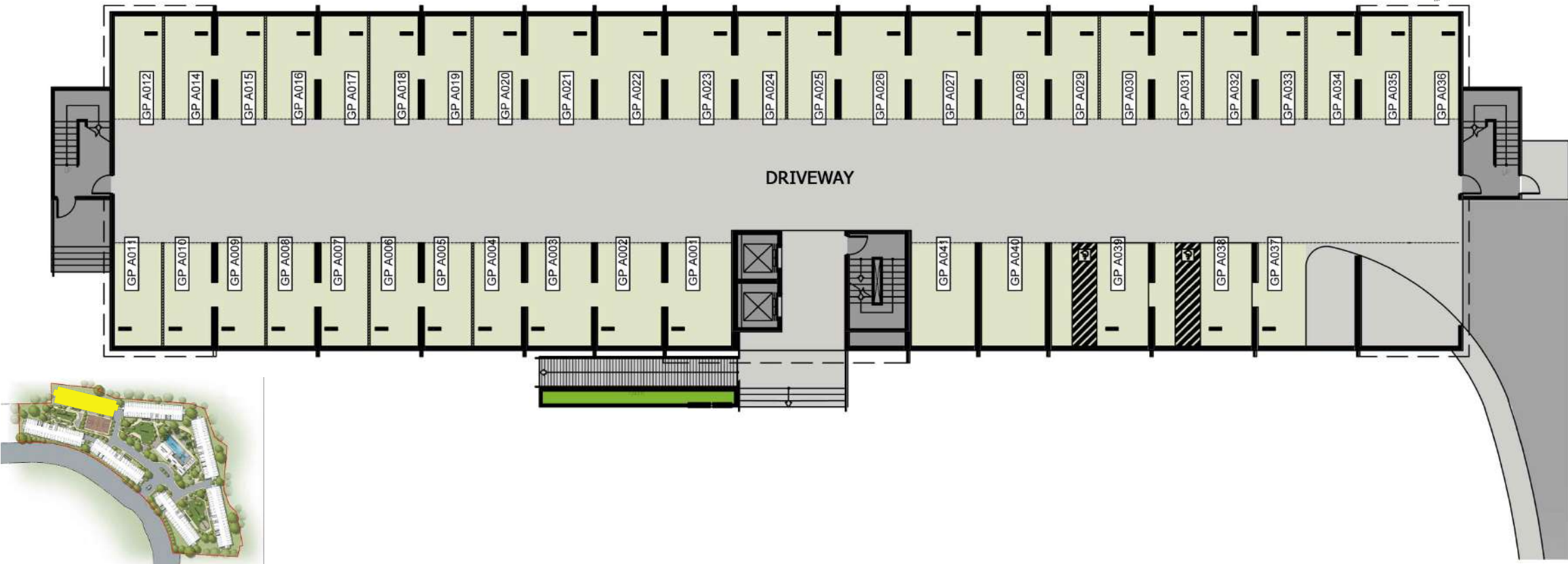
BUILDING	UNIT TYPE	
	STUDIO	2-BR
A	22 SQM	32 SQM
B		
C		
D		
E		
F		
G		



SALES MAP



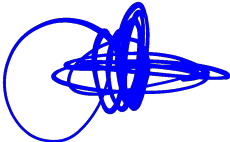
*NOTE :
THE PRESENTATIONS IN THIS PLAN ARE IN ACCORDANCE WITH THE PRESENT PLANS. THE DEVELOPER SHALL EXERT BEST EFFORTS TO CONFORM WITH THE DEVELOPMENT PLANS AND PROSPECTIVE USES ILLUSTRATED, BUT THESE MAYBE SUBJECT TO REVISIONS AND AMENDMENTS WITHOUT PRIOR NOTICE.
VERSION: SH-FTV-210802-REV.02-SM



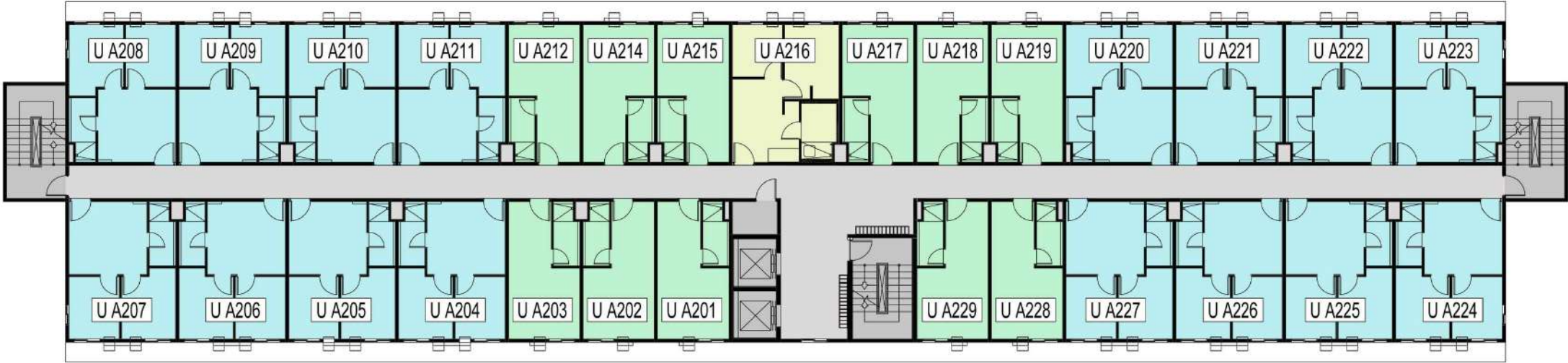
KEY MAP



GROUND FLOOR PLAN
BUILDING "A"



*NOTE :
THE PRESENTATIONS IN THIS PLAN ARE IN ACCORDANCE WITH THE PRESENT PLANS. THE DEVELOPER SHALL EXERT BEST EFFORTS TO CONFORM WITH THE DEVELOPMENT PLANS AND PROSPECTIVE USES ILLUSTRATED, BUT THESE MAYBE SUBJECT TO REVISIONS AND AMENDMENTS WITHOUT PRIOR NOTICE.
VERSION: SH-FT0A-210803

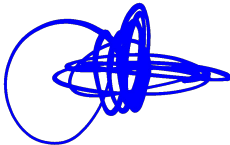


KEY MAP



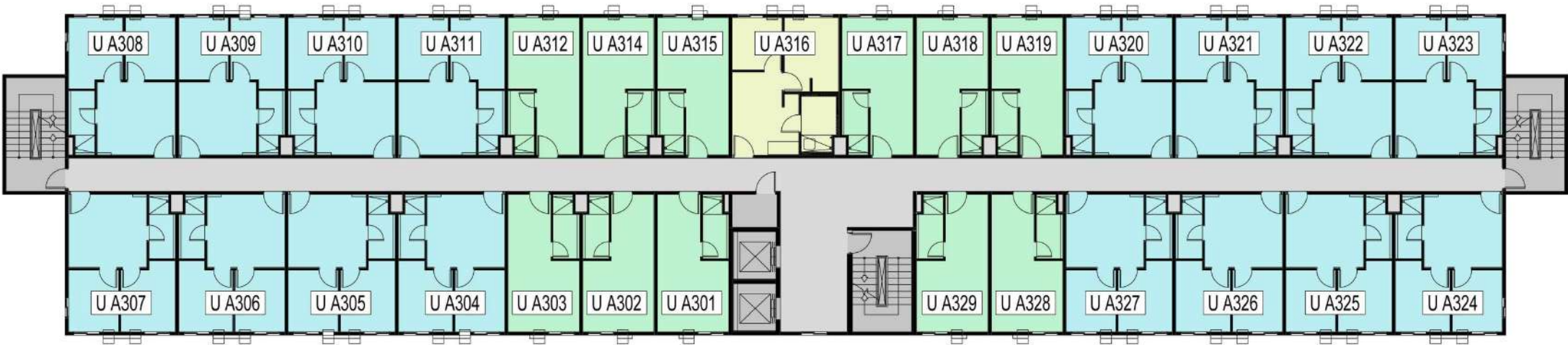
SECOND FLOOR PLAN
BUILDING "A"

- 2 Bedroom Unit A
- 2 Bedroom Unit B
- Studio Unit



*NOTE :
THE PRESENTATIONS IN THIS PLAN ARE IN ACCORDANCE WITH THE PRESENT PLANS. THE DEVELOPER SHALL EXERT BEST EFFORTS TO CONFORM WITH THE DEVELOPMENT PLANS AND PROSPECTIVE USES ILLUSTRATED, BUT THESE MAYBE SUBJECT TO REVISIONS AND AMENDMENTS WITHOUT PRIOR NOTICE.

VERSION: SH-FT0A-210803

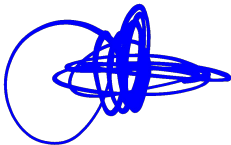


KEY MAP



THIRD FLOOR PLAN
BUILDING "A"

- 2 Bedroom Unit A
- 2 Bedroom Unit B
- Studio Unit



*NOTE :
THE PRESENTATIONS IN THIS PLAN ARE IN ACCORDANCE WITH THE PRESENT PLANS. THE DEVELOPER SHALL EXERT BEST EFFORTS TO CONFORM WITH THE DEVELOPMENT PLANS AND PROSPECTIVE USES ILLUSTRATED, BUT THESE MAYBE SUBJECT TO REVISIONS AND AMENDMENTS WITHOUT PRIOR NOTICE.

VERSION: SH-FT0A-210803

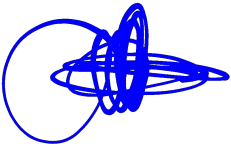


KEY MAP



FOURTH FLOOR PLAN
BUILDING "A"

- 2 Bedroom Unit A
- 2 Bedroom Unit B
- Studio Unit



*NOTE :
THE PRESENTATIONS IN THIS PLAN ARE IN ACCORDANCE WITH THE PRESENT PLANS. THE DEVELOPER SHALL EXERT BEST EFFORTS TO CONFORM WITH THE DEVELOPMENT PLANS AND PROSPECTIVE USES ILLUSTRATED, BUT THESE MAYBE SUBJECT TO REVISIONS AND AMENDMENTS WITHOUT PRIOR NOTICE.
VERSION: SH-FT0A-210803



KEY MAP

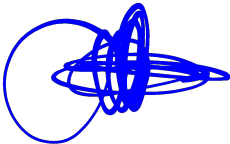


FIFTH FLOOR PLAN
BUILDING "A"

- 2 Bedroom Unit A
- 2 Bedroom Unit B
- Studio Unit

*NOTE :
THE PRESENTATIONS IN THIS PLAN ARE IN ACCORDANCE WITH THE PRESENT PLANS. THE DEVELOPER SHALL EXERT BEST EFFORTS TO CONFORM WITH THE DEVELOPMENT PLANS AND PROSPECTIVE USES ILLUSTRATED, BUT THESE MAYBE SUBJECT TO REVISIONS AND AMENDMENTS WITHOUT PRIOR NOTICE.

VERSION: SH-FT0A-210803



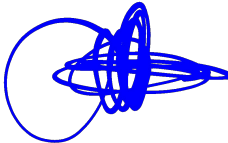


KEY MAP



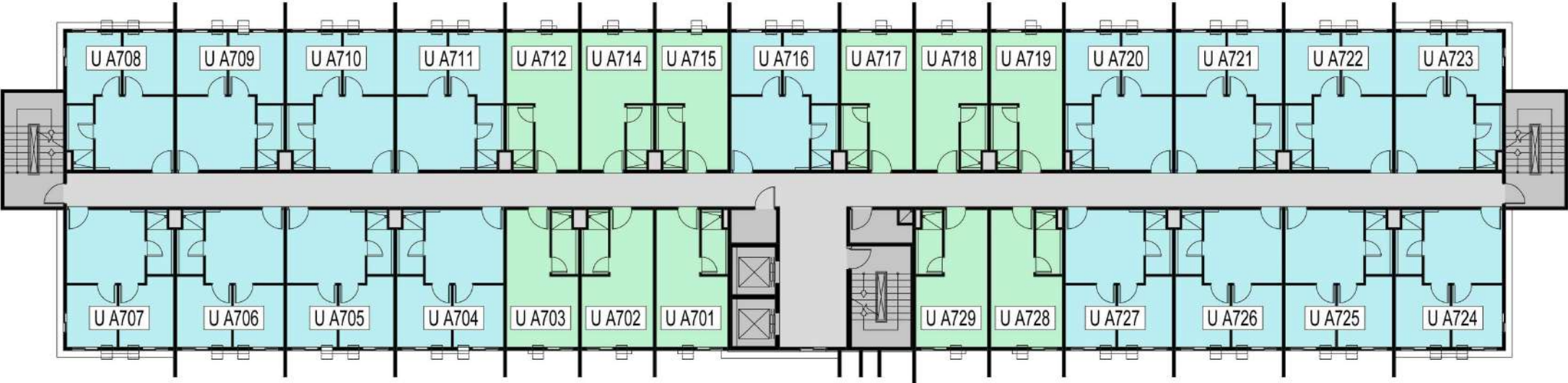
SIXTH FLOOR PLAN
BUILDING "A"

- 2 Bedroom Unit A
- 2 Bedroom Unit B
- Studio Unit



*NOTE :
THE PRESENTATIONS IN THIS PLAN ARE IN ACCORDANCE WITH THE PRESENT PLANS. THE DEVELOPER SHALL EXERT BEST EFFORTS TO CONFORM WITH THE DEVELOPMENT PLANS AND PROSPECTIVE USES ILLUSTRATED, BUT THESE MAYBE SUBJECT TO REVISIONS AND AMENDMENTS WITHOUT PRIOR NOTICE.

VERSION: SH-FT0A-210803

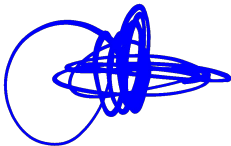


KEY MAP



SEVENTH FLOOR PLAN
BUILDING "A"

- 2 Bedroom Unit A
- 2 Bedroom Unit B
- Studio Unit



*NOTE :
THE PRESENTATIONS IN THIS PLAN ARE IN ACCORDANCE WITH THE PRESENT PLANS. THE DEVELOPER SHALL EXERT BEST EFFORTS TO CONFORM WITH THE DEVELOPMENT PLANS AND PROSPECTIVE USES ILLUSTRATED, BUT THESE MAYBE SUBJECT TO REVISIONS AND AMENDMENTS WITHOUT PRIOR NOTICE.

VERSION: SH-FT0A-210803



KEYMAP

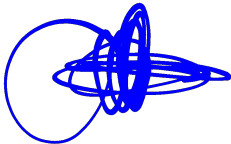


EIGHTH FLOOR PLAN
BUILDING "A"

- 2 Bedroom Unit A
- 2 Bedroom Unit B
- Studio Unit

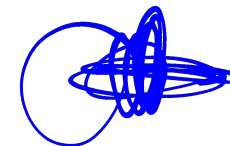
*NOTE :
THE PRESENTATIONS IN THIS PLAN ARE IN ACCORDANCE WITH THE PRESENT PLANS. THE DEVELOPER SHALL EXERT BEST EFFORTS TO CONFORM WITH THE DEVELOPMENT PLANS AND PROSPECTIVE USES ILLUSTRATED, BUT THESE MAYBE SUBJECT TO REVISIONS AND AMENDMENTS WITHOUT PRIOR NOTICE.

VERSION: SH-FT0A-210803





VERSION: SH-FTOA-210803





PLAN

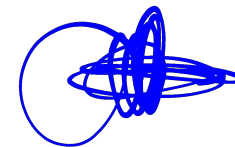


AXONOMETRIC



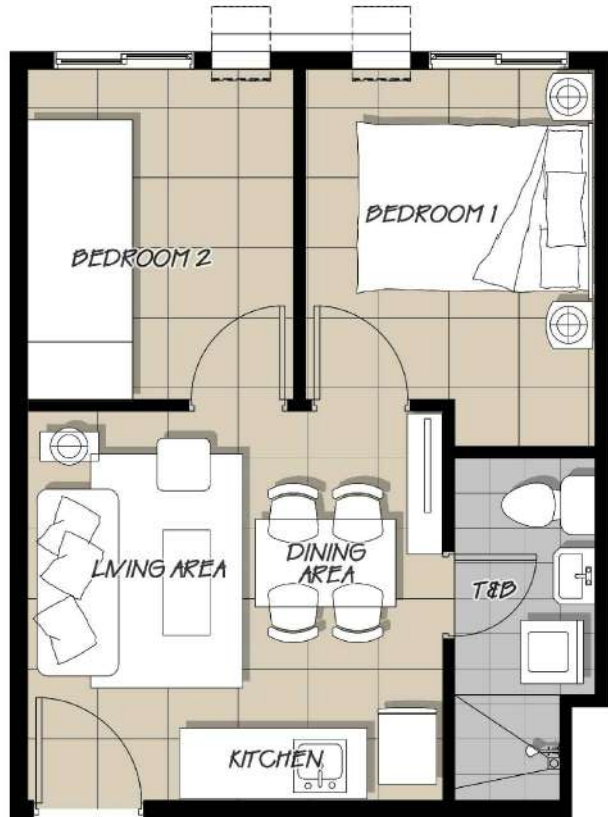
STUDIO UNIT (22 SQ.M.)

MODEL UNITS



*NOTE :
THE PRESENTATIONS IN THIS PLAN ARE IN ACCORDANCE
WITH THE PRESENT PLANS. THE DEVELOPER SHALL EXERT
BEST EFFORTS TO CONFORM WITH THE DEVELOPMENT PLANS
AND PROSPECTIVE USES ILLUSTRATED, BUT THESE MAYBE
SUBJECT TO REVISIONS AND AMENDMENTS WITHOUT PRIOR
NOTICE.

VERSION: SH-FT0A-210803



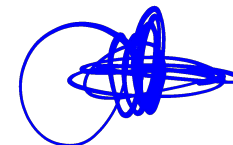
PLAN



AXONOMETRIC

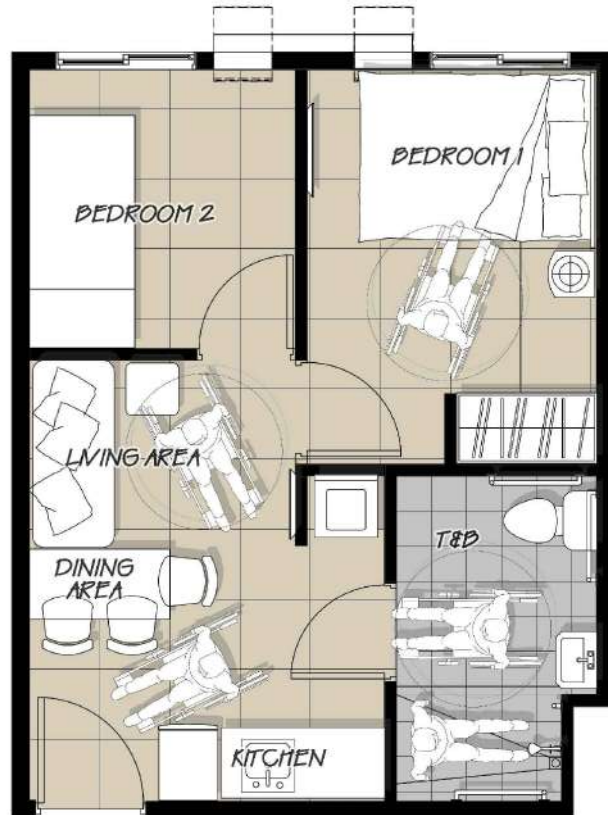
2-BEDROOM UNIT (32 SQ.M.)

MODEL UNITS



*NOTE :
THE PRESENTATIONS IN THIS PLAN ARE IN ACCORDANCE
WITH THE PRESENT PLANS. THE DEVELOPER SHALL EXERT
BEST EFFORTS TO CONFORM WITH THE DEVELOPMENT PLANS
AND PROSPECTIVE USES ILLUSTRATED, BUT THESE MAYBE
SUBJECT TO REVISIONS AND AMENDMENTS WITHOUT PRIOR
NOTICE.

VERSION: SH-FT0A-210803



PLAN

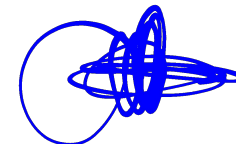


AXONOMETRIC



2-BEDROOM PWD UNIT (32 SQ.M.)

MODEL UNITS



*NOTE :
THE PRESENTATIONS IN THIS PLAN ARE IN ACCORDANCE
WITH THE PRESENT PLANS. THE DEVELOPER SHALL EXERT
BEST EFFORTS TO CONFORM WITH THE DEVELOPMENT PLANS
AND PROSPECTIVE USES ILLUSTRATED, BUT THESE MAYBE
SUBJECT TO REVISIONS AND AMENDMENTS WITHOUT PRIOR
NOTICE.

VERSION: SH-FT0A-210803