



NOTES:

PARKING SLOTS DATA - RESL
REGULAR 28

RETAIL UNIT CUTS	AREA
UNIT NO.	AREA
RETAIL 01	62.35
RETAIL 02	48.00
RETAIL 03	49.05
RETAIL 05	55.95
RETAIL 06	56.65
TOTAL AREA	232.00

1. REFER TO LANDSCAPE DRAWING FOR SOFT & HARDSCAPE DETAILS OF AREAS (E.G. GARDEN AREAS, PLANT BOXES ETC.).
2. FOR STAIR DETAILS, REFER TO SHEETS A-403 - A-412
3. FOR CORE DETAILS, REFER TO SHEETS A-401 - A-402
4. FOR BAY DETAILS, REFER TO SHEETS A-507 - A-509.
5. FOR WALL TYPES, REFER TO SHEET A-616.
6. FOR SETTING-OUT PLANS, REFER TO SHEETS A-401 - A-413
7. FOR SCHEDULE OF WINDOWS, REFER TO SHEET A-910
8. FOR SCHEDULE OF BALCONIES & LOVERS, REFER TO SHEET A-915
9. FOR SCHEDULE OF DOORS, REFER TO SHEET A-908 - A-909.
10. FOR SCHEDULE OF ROOM FINISHES, REFER TO SHEETS A-906 - A-908.
11. FOR MISCELLANEOUS DETAILS, REFER TO SHEETS A-1001 - A-1007
12. FOR TRANSPORTER, SINKET, ET ROOM AND LIFT ROOM DETAILS REFER TO ELECTRICAL DRAWINGS.
13. FOR WATER METERS ROOM, PUMP ROOM, WATER CISTERN DETAILS REFER TO PLUMBING DRAWINGS.
14. ALL ELEVATION MARKS ARE INDICATE OF FLOOR LEVEL. TRANSDUCER VERIFY ELEVATION MARKS WITH GEODETIC ENGINEERS AS BUILT SURVEY.



1 LOWER GROUND FLOOR PLAN
SCALE 1:600M

SCORE DOCUMENT
THIS DRAWING IS A PRELIMINARY DESIGN AND SHOULD NOT BE USED FOR CONSTRUCTION. THE CLIENT AND ARCHITECT ASSUME RESPONSIBILITY FOR THE ACCURACY OF THE INFORMATION PROVIDED. THE ARCHITECT IS NOT RESPONSIBLE FOR THE ACCURACY OF THE INFORMATION PROVIDED BY OTHER PROFESSIONALS OR FOR THE ACCURACY OF THE INFORMATION PROVIDED BY THE CLIENT. THE ARCHITECT IS NOT RESPONSIBLE FOR THE ACCURACY OF THE INFORMATION PROVIDED BY OTHER PROFESSIONALS OR FOR THE ACCURACY OF THE INFORMATION PROVIDED BY THE CLIENT. THE ARCHITECT IS NOT RESPONSIBLE FOR THE ACCURACY OF THE INFORMATION PROVIDED BY OTHER PROFESSIONALS OR FOR THE ACCURACY OF THE INFORMATION PROVIDED BY THE CLIENT.

NO.	REASONS FOR REVISION	DATE	BY
1	COORDINATION	02-29-2012	PRSP
2	REVISE DESIGN	02-29-2012	PRSP
3	REVISE DESIGN	03-28-2012	PRSP
4	CONSTRUCTION DOCUMENTS	06-22-2012	PRSP
5	FINAL CONSTRUCTION DOCUMENTS	11-16-2012	PRSP

PROJECT:
AMAYA SKIERS CUBAO
PHASE 2
OWNER: AMAIA LAND CORPORATION

ARCHITECT:
PRSP ARCHITECTS
PIMENTEL RODRIGUEZ SIMBULAN & PARTNERS
12th Floor, National Building, Corner, Rizal, P.O. Box 1000, Manila, Philippines
Tel: +63 2 8888 8888
Fax: +63 2 8888 8888
www.prsp.com

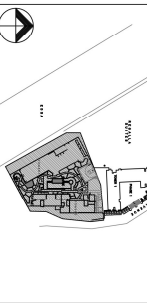
STRUCTURAL ENGINEERING CONSULTANT:
SYA
12th Floor, National Building, Corner, Rizal, P.O. Box 1000, Manila, Philippines
Tel: +63 2 8888 8888
Fax: +63 2 8888 8888
www.sya.com

MEP ENGINEERING CONSULTANT:
Mehnerd Philippines Inc.
12th Floor, National Building, Corner, Rizal, P.O. Box 1000, Manila, Philippines
Tel: +63 2 8888 8888
Fax: +63 2 8888 8888
www.mehnerd.com

LANDSCAPE ARCHITECT:
E GROUP
12th Floor, National Building, Corner, Rizal, P.O. Box 1000, Manila, Philippines
Tel: +63 2 8888 8888
Fax: +63 2 8888 8888
www.egroup.com

ISSUED BY:
PRSP ARCHITECTS
PIMENTEL RODRIGUEZ SIMBULAN & PARTNERS
ANTONIO RICARDO C. SIMBULAN
ARCHITECT

PROJECT INFORMATION:
PRJ. NO. 001120
PLACE ISSUED: MANILA CITY
PRJ. NO. 287832
DATE ISSUED: 13 JAN 2011
KEY PLAN:

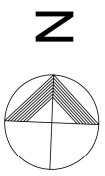


DRAWING TITLE:
LOWER GROUND FLOOR PLAN

PACKAGE NAME:
FINAL CONSTRUCTION DOCUMENTS PACKAGE

DOCUMENT TYPE:
ARCHITECTURAL DRAWING

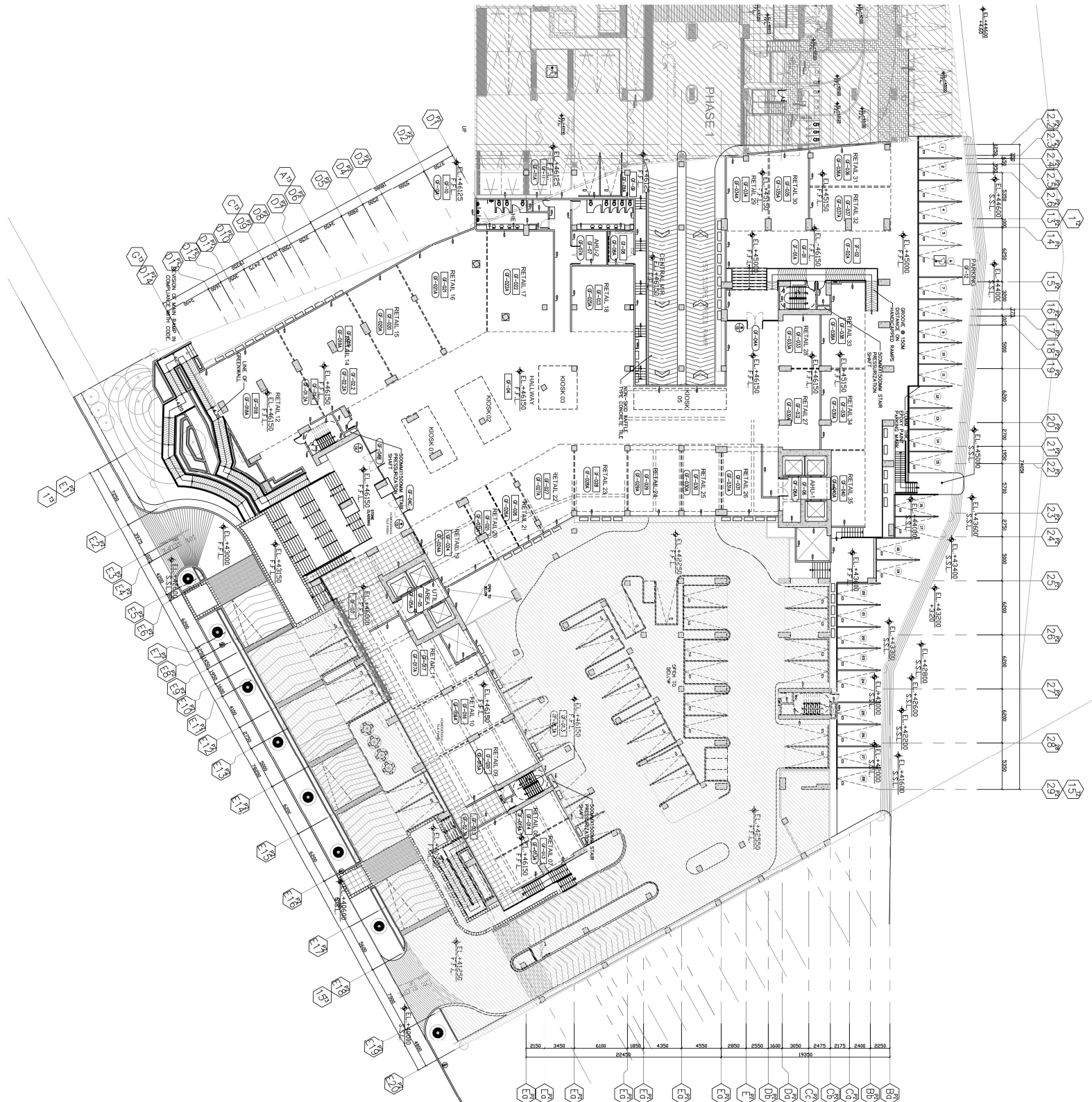
DRAWING STATUS: CONSTRUCTION DOCUMENTS
SCALE: 1:600M
DRAWN BY: PRSP/AC
CHECKED BY: PRSP/AC
DATE: 11-16-2012
PROJECT NO: 2011-04-A-101
DRAWING NO: 2011-04-A-101



NOTES:

PARKING SLOTS DATA - RETAIL	35
REGULAR	2
HANDICAP	2
TOTAL PARKING	37
RETAIL UNIT CUTS	
UNIT NO.	AREA
RETAIL 07	42.85
RETAIL 08	38.60
RETAIL 09	62.60
RETAIL 10	62.60
RETAIL 11	62.60
RETAIL 12	117.00
RETAIL 13	117.00
RETAIL 14	104.90
RETAIL 15	77.30
RETAIL 16	98.85
RETAIL 17	51.55
RETAIL 18	56.30
RETAIL 19	54.05
RETAIL 20	28.35
RETAIL 21	50.25
RETAIL 22	50.90
RETAIL 23	50.90
RETAIL 24	51.75
RETAIL 25	38.15
RETAIL 26	43.75
RETAIL 27	45.30
RETAIL 28	30.30
RETAIL 29	43.45
RETAIL 30	43.45
RETAIL 31	43.70
RETAIL 32	48.40
RETAIL 33	48.40
RETAIL 34	47.65
RETAIL 35	34.85
SUBTOTAL AREA	1,541.70
KIOSK NO.	
KIOSK 01	24.50
KIOSK 02	24.50
KIOSK 03	22.05
KIOSK 05	25.40
SUBTOTAL AREA	58.45
TOTAL AREA	1,538.15

1. REFER TO LANDSCAPE DRAWINGS FOR SOFT & HARDSCAPE DETAILS OF AMENITIES (E.G. GARDEN AREAS, PLANT BOXES ETC.).
2. FOR STAIR DETAILS, REFER TO SHEETS A-103 - A-112.
3. FOR CORE DETAILS, REFER TO SHEETS A-101 - A-102.
4. FOR BAY DETAILS, REFER TO SHEETS A-107 - A-109.
5. FOR WALL TYPES, REFER TO SHEET A-116.
6. FOR SETTING-OUT PLANS, REFER TO SHEETS A-101 - A-113.
7. FOR SCHEDULE OF WINDOWS, REFER TO SHEET A-910.
8. FOR SCHEDULE OF RAILINGS & LOUVERS, REFER TO SHEET A-915.
9. FOR SCHEDULE OF DOORS, REFER TO SHEET A-908 - A-909.
10. FOR SCHEDULE OF ROOM FINISHES, REFER TO SHEETS 10. FOR INSTALLATION DETAILS, REFER TO SHEETS A-1001 - A-1011.
11. FOR TRANSPORTER GENERAL SET ROOM AND LIFT ROOM DETAILS REFER TO ELECTRICAL DRAWINGS.
12. FOR WATER METER ROOM, PUMP ROOM, WATER SYSTEM DETAILS REFER TO PLUMBING DRAWINGS.
13. FOR WATER METER ROOM, PUMP ROOM, WATER SYSTEM DETAILS REFER TO PLUMBING DRAWINGS.
14. ALL ELEVATION MARKS ARE INDICATIVE OF FLOOR LEVEL TRANSMISSION. VERIFY ELEVATION MARKS WITH GEODETIC ENGINEERS AS BUILT SOURCE.



1 UPPER GROUND FLOOR PLAN
SCALE 1:600M

SCOPE DOCUMENT

This document contains the general scope of the project. It is not intended to be a contract document. It is the responsibility of the client to ensure that the project is completed in accordance with the scope of work defined in this document. The client shall be responsible for any changes to the scope of work during the project.

NO.	REASON FOR REVISION	DATE	BY
1	ISSUE FOR PERMIT	02-28-2012	PRSP
2	ISSUE FOR PERMIT	03-28-2012	PRSP
3	ISSUE FOR PERMIT	03-28-2012	PRSP
4	FINAL CONSTRUCTION DOCUMENTS	06-22-2012	PRSP
5	ISSUE FOR PERMIT	11-16-2012	PRSP

PROJECT:
**AMAIA SKIERS CUBAO
PHASE 2**

LOCATION: P. TILDON CORNER EDSA, CUBAO, Q.C.

OWNER:
**AMAIA LAND
CORPORATION**

ARCHITECT:
PRSP ARCHITECTS
PIMENTEL RODRIGUEZ SIMBULAN & PARTNERS

STRUCTURAL ENGINEERING CONSULTANT:
SYA ENGINEERS

MEP ENGINEERING CONSULTANT:
Methford Philippines Inc.

LANDSCAPE ARCHITECT:
PRSP ARCHITECTS

ISSUED BY:
PRSP ARCHITECTS
PIMENTEL RODRIGUEZ SIMBULAN & PARTNERS

ANTONIO RICARDO C. SIMBULAN
ARCHITECT

PRG. REC. NO. 0011210
PLACE ISSUED: MANILA CITY
PRG. NO. 287832
DATE ISSUED: 13 JAN 2011
KEY PLAN:

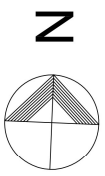
DRAWING TITLE:
UPPER GROUND FLOOR PLAN

PACKAGE NAME:
FINAL CONSTRUCTION DOCUMENTS PACKAGE

DOCUMENT TYPE:
ARCHITECTURAL DRAWING

DRAWING STATUS: CONSTRUCTION DOCUMENTS
SCALE: 1:600M

DESIGNED BY: []
CHECKED BY: []
DATE: 11-16-2012
PROJECT NO: 2011-04-A-102
DRAWING NO: 2011-04-A-102



NOTES:

PARKING SLOTS DATA - RETAIL	126
REGULAR	5
HANDICAP	1
TOTAL PARKING	131

1. REFER TO LANDSCAPE DRAWINGS FOR SOFT & HARDSCAPE DETAILS OF AMENITIES (E.G. GARDEN AREAS, PLANT BOXES ETC.).
2. FOR STAIR DETAILS, REFER TO SHEETS A-103 - A-112.
3. FOR CORE DETAILS, REFER TO SHEETS A-101 - A-102.
4. FOR BAY DETAILS, REFER TO SHEETS A-307 - A-309.
5. FOR WALL TYPES, REFER TO SHEET A-618.
6. FOR SETTING-OUT PLANS, REFER TO SHEET A-401 - A-403.
7. FOR SCHEDULE OF WINDOWS, REFER TO SHEET A-910.
8. FOR SCHEDULE OF RAILINGS & LOUVERS, REFER TO SHEET A-915.
9. FOR SCHEDULE OF DOORS, REFER TO SHEET A-908 - A-909.
10. FOR SCHEDULE OF ROOM FINISHES, REFER TO SHEETS A-1008 - A-1009.
11. FOR MISCELLANEOUS DETAILS, REFER TO SHEETS A-1001 - A-1011.
12. FOR TRANSPORTER, GENSET, ET ROOM AND LUGG ROOM DETAILS REFER TO ELECTRICAL DRAWINGS.
13. FOR WATER METER ROOM, PUMP ROOM, WATER CISTERN DETAILS REFER TO PLUMBING DRAWINGS.
14. ALL ELEVATION MARKS ARE INDICATIVE OF FLOOR LEVEL. ENGINEERS AS BUILT SURVEY.



1 SECOND FLOOR PLAN
SCALE 1:600M

SCOPE DOCUMENT

This document defines the general scope of the project. It is not intended to be a contract document. It is the responsibility of the client to ensure that the project is properly defined and that the scope is clearly stated. The client is responsible for providing the necessary information and resources to complete the project. The project manager is responsible for managing the project and ensuring that the scope is maintained throughout the project.

NO.	REASONS FOR REVISION	DATE	BY
1	COORDINATE CORRECTION	02-29-2012	PRSP
2	REVISE DESIGN DEVELOPMENT	02-29-2012	PRSP
3	REVISE DESIGN DEVELOPMENT	03-28-2012	PRSP
4	CONSTRUCTION DOCUMENTS	06-22-2012	PRSP
5	FINAL CONSTRUCTION DOCUMENTS	11-16-2012	PRSP

NO.	REASONS FOR REVISION	DATE	BY
1	COORDINATE CORRECTION	02-29-2012	PRSP
2	REVISE DESIGN DEVELOPMENT	02-29-2012	PRSP
3	REVISE DESIGN DEVELOPMENT	03-28-2012	PRSP
4	CONSTRUCTION DOCUMENTS	06-22-2012	PRSP
5	FINAL CONSTRUCTION DOCUMENTS	11-16-2012	PRSP

PROJECT: **AMAYA SKIES CUBAO PHASE 2**
 LOCATION: P. TILDON CORNER EDSA, CUBAO, Q.C.
 OWNER: **AMAYA LAND CORPORATION**

ARCHITECT: **PRSP ARCHITECTS**
PIMENTEL RODRIGUEZ SIMBULAN & PARTNERS
 12th Floor, National Building, Corner EDSA, Cubao, Quezon City, Philippines
 Tel: +632 7253 1234, Fax: +632 7253 4567, www.prsp.com

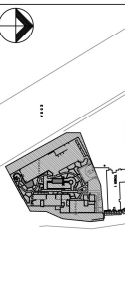
STRUCTURAL ENGINEERING CONSULTANT:
SYA ENGINEERS
 12th Floor, National Building, Corner EDSA, Cubao, Quezon City, Philippines
 Tel: +632 7253 1234, Fax: +632 7253 4567, www.sya.com

MEFP ENGINEERING CONSULTANT:
Mechanical Philippines Inc.
 12th Floor, National Building, Corner EDSA, Cubao, Quezon City, Philippines
 Tel: +632 7253 1234, Fax: +632 7253 4567, www.mechphil.com

LANDSCAPE ARCHITECT:
6 GROUP
 12th Floor, National Building, Corner EDSA, Cubao, Quezon City, Philippines
 Tel: +632 7253 1234, Fax: +632 7253 4567, www.6group.com

ISSUED BY: **PRSP ARCHITECTS**
PIMENTEL RODRIGUEZ SIMBULAN & PARTNERS
 ARCHITECT
 ANTONIO RICARDO C. SIMBULAN

PRG. REG. NO. 0011210 | PLACE ISSUED: MANILA CITY
 PRG. NO. 287832 | DATE ISSUED: 13 JAN 2011
 KEY PLAN:

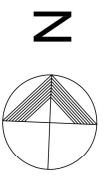


DRAWING TITLE: **SECOND FLOOR PLAN**

PACKAGE NAME: **FINAL CONSTRUCTION DOCUMENTS PACKAGE**

DOCUMENT TYPE: **ARCHITECTURAL DRAWING**

DESIGN STATUS: CONSTRUCTION DOCUMENTS	DRAWN BY: P/AMC
SCALE: 1:600M	
REVISION BY:	ISSUE DATE: 11-16-2012
DATE FILE:	PROJECT NO: 2011-04-103
DRAWING NO: 2011-04-103	SCALE: 1:600M



NOTES:

PARKING SLOTS DATA - RETAIL	136
REGULAR	6
HANDICAP	6
TOTAL PARKING	142

- REFER TO LANDSCAPE DRAWINGS FOR SOFT & HARDSCAPE DETAILS OF AMENITIES (E.G. GARDEN AREAS, PLANT BOXES ETC.)
- FOR STAIR DETAILS, REFER TO SHEETS A-401 - A-412
- FOR CORE DETAILS, REFER TO SHEETS A-307 - A-309.
- FOR BAY DETAILS, REFER TO SHEETS A-616
- FOR WALL TYPES, REFER TO SHEET A-616
- FOR SETTING-OUT PLANS, REFER TO SHEETS A-401 - A-413
- FOR SCHEDULE OF WINDOWS, REFER TO SHEET A-910
- FOR SCHEDULE OF RAILINGS & LOUVERS, REFER TO SHEET A-915
- FOR SCHEDULE OF DOORS, REFER TO SHEET A-908 - A-909
- FOR SCHEDULE OF ROOM FINISHES, REFER TO SHEETS A-908 - A-909
- FOR MISCELLANEOUS DETAILS, REFER TO SHEETS A-1001 - A-1007
- FOR TRANSPORTER, REFER TO ROOM AND LIFT ROOM DRAWINGS
- FOR WATER METERS ROOM, PUMP ROOM, WATER CISTERN DETAILS REFER TO PLUMBING DRAWINGS
- FOR WATERS METERS ROOM, PUMP ROOM, WATER CISTERN DETAILS REFER TO PLUMBING DRAWINGS
- ALL ELEVATION MARKS ARE INDICATED OF FLOOR LEVEL. TRANSLATION VERIFY ELEVATION MARKS WITH GEODETIC ENGINEERS AS BUILT SOURCE.



1 THIRD AND FOURTH FLOOR PLAN
SCALE: 1:600M

SCORE DOCUMENT

This document contains the design, scope of the project, the work, materials, methods, and the type of construction. It is a legal document and should not be used for any other purpose. It is the property of the architect and should not be reproduced without the architect's written consent. It is the responsibility of the client to ensure that the project is completed in accordance with the design and scope of the project.

NO.	REASONS FOR REVISION	DATE	BY
1	LOGGICAL CORRECTION	02-29-2012	PRSP
2	REVISE DESIGN DEVELOPMENT	02-29-2012	PRSP
3	LOGGICAL CORRECTION	03-28-2012	PRSP
4	CONSTRUCTION DOCUMENTS	06-22-2012	PRSP
5	FINAL CONSTRUCTION DOCUMENTS	11-16-2012	PRSP

PROJECT:
AMALIA SKIES CUBAO
PHASE 2
 LOCATION: P. TILDON CORNER EDSA, CUBAO, Q.C.
 OWNER:
AMALIA LAND
CORPORATION

ARCHITECT:
PRSP ARCHITECTS
 PIENITTEL RODRIGUEZ SIMBULAN & PARTNERS
 12th Floor, National Building, Corner EDSA, Cubao, Quezon City, Philippines
 Tel: +632 8822 1234, 8822 1235, 8822 1236, 8822 1237
 Fax: +632 8822 1238, 8822 1239, 8822 1240, 8822 1241
 www.prsp.com.ph

STRUCTURAL ENGINEERING CONSULTANT:
SYA ENGINEERS
 12th Floor, National Building, Corner EDSA, Cubao, Quezon City, Philippines
 Tel: +632 8822 1234, 8822 1235, 8822 1236, 8822 1237
 Fax: +632 8822 1238, 8822 1239, 8822 1240, 8822 1241
 www.sya.com.ph

MEP ENGINEERING CONSULTANT:
Mechanical Philippines Inc.
 12th Floor, National Building, Corner EDSA, Cubao, Quezon City, Philippines
 Tel: +632 8822 1234, 8822 1235, 8822 1236, 8822 1237
 Fax: +632 8822 1238, 8822 1239, 8822 1240, 8822 1241
 www.mechanical.com.ph

LANDSCAPE ARCHITECT:
e GROUP
 12th Floor, National Building, Corner EDSA, Cubao, Quezon City, Philippines
 Tel: +632 8822 1234, 8822 1235, 8822 1236, 8822 1237
 Fax: +632 8822 1238, 8822 1239, 8822 1240, 8822 1241
 www.e-group.com.ph

ISSUED BY:
PRSP ARCHITECTS
 PIENITTEL RODRIGUEZ SIMBULAN & PARTNERS
 ANTONIO RICARDO C. SIMBULAN
 ARCHITECT

PROJECT INFORMATION:
 REG. NO. 0011270 | PLACE ISSUED: MANILA CITY
 REG. NO. 2877832 | DATE ISSUED: 13 JAN 2011
 KEY PLAN:

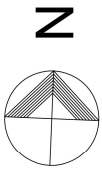


DRAWING TITLE:
THIRD & FOURTH FLOOR PLAN

PACKAGE NAME:
 FINAL CONSTRUCTION DOCUMENTS PACKAGE
DOCUMENT TYPE:
 ARCHITECTURAL DRAWING

REVISION	DATE	BY
1	11-16-2012	PRSP
2	06-22-2012	PRSP
3	03-28-2012	PRSP
4	02-29-2012	PRSP
5	02-29-2012	PRSP

DRAWING NO.: 2011-04-A-104
SCALE: 1:600M



NOTES:

PARKING SLOTS DATA - RETAIL	136
REGULAR	6
HANDICAP	142
TOTAL PARKING	142

1. REFER TO LANDSCAPE DRAWINGS FOR SOFT & HARDSCAPE DETAILS OF AREAS (E.G. GRASS PLOTS, PLANT BOXES ETC.)
2. FOR STAIR DETAILS, REFER TO SHEETS A-403 - A-412
3. FOR CORE DETAILS, REFER TO SHEETS A-401 - A-402
4. FOR BAY DETAILS, REFER TO SHEETS A-307 - A-309.
5. FOR WALL TYPES, REFER TO SHEET A-616.
6. FOR SETTING-OUT PLANS, REFER TO SHEETS A-401 - A-413
7. FOR SCHEDULE OF WINDOWS, REFER TO SHEET A-910
8. FOR SCHEDULE OF BALUNES & LOUVERS, REFER TO SHEET A-915
9. FOR SCHEDULE OF DOORS, REFER TO SHEET A-908 - A-909
10. FOR SCHEDULE OF ROOM FINISHES, REFER TO SHEETS A-908 - A-909.
11. FOR MISCELLANEOUS DETAILS, REFER TO SHEETS A-1001 - A-1011.
12. FOR TRANSFORMER GENSET, EE ROOM AND LVSS ROOM DETAILS REFER TO MECHANICAL DRAWINGS.
13. ROOM WITH WATER FROM CHINA ROOM WATER SYSTEM DETAILS REFER TO PLUMBING DRAWINGS.
14. ALL ELEVATION MARKS ARE INDICATIVE OF FLOOR LEVEL. TRANSMISSION, VERIFY ELEVATION MARKS WITH GEODETIC ENGINEERS AS BUILT SURVEY.



1 FIFTH FLOOR PLAN
SCALE 1:600M

SCORE DOCUMENT

This document contains the design score of the project. It is a summary of the design score and is not intended to be used as a basis for any other design or construction. The design score is a result of the design process and is subject to change. The design score is a result of the design process and is subject to change. The design score is a result of the design process and is subject to change.

NO.	REASONS FOR REVISION	DATE	BY
1	COORDINATE REVISION	02-28-2012	PRSP
2	REVISE DESIGN DEVELOPMENT	02-29-2012	PRSP
3	REVISE DESIGN DEVELOPMENT	03-28-2012	PRSP
4	CONSTRUCTION DOCUMENTS	06-22-2012	PRSP
5	FINAL CONSTRUCTION DOCUMENTS	11-16-2012	PRSP

PROJECT:
**AMAIA SKIES CUBAO
PHASE 2**
LOCATION: P. TILDON CORNER EDSA, CUBAO, D.C.
OWNER:
**AMAIA LAND
CORPORATION**

ARCHITECT:
PRSP ARCHITECTS
PIENETEL RODRIGUEZ SIMBULAN & PARTNERS
1277 E. TILDON CORNER EDSA, CUBAO, D.C.
TEL: 02-8082-1234
WWW.PRSPARCHITECTS.COM

STRUCTURAL ENGINEERING CONSULTANT:
SYA
1277 E. TILDON CORNER EDSA, CUBAO, D.C.
TEL: 02-8082-1234
WWW.SYAENGINEERS.COM

MEP ENGINEERING CONSULTANT:
Manhardt Philippines Inc.
1277 E. TILDON CORNER EDSA, CUBAO, D.C.
TEL: 02-8082-1234
WWW.MANHARDT.COM

LANDSCAPE ARCHITECT:
6 GROUP
1277 E. TILDON CORNER EDSA, CUBAO, D.C.
TEL: 02-8082-1234
WWW.6GROUP.COM

ISSUED BY:
PRSP ARCHITECTS
PIENETEL RODRIGUEZ SIMBULAN & PARTNERS
ANTONIO RICARDO C. SIMBULAN
ARCHITECT

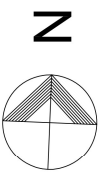
PROJ. NO.: 001120
PLACE ISSUED: MANILA CITY
PROJ. NO.: 287832
DATE ISSUED: 13 JUN 2011
KEY PLAN:

DRAWING TITLE:
FIFTH FLOOR PLAN

PACKAGE NAME:
**FINAL CONSTRUCTION
DOCUMENTS PACKAGE**

DOCUMENT TYPE:
ARCHITECTURAL DRAWING

DRAWING STATUS: CONSTRUCTION DOCUMENTS
DRAWN BY: P/AMC
SCALE: 1/600M
DATE: 11-16-2012
PROJECT NO.: 2011-04-A-105



NOTES:

PARKING SLOTS DATA - RETAIL	136
REGULAR	6
HANDICAP	142
TOTAL PARKING	

1. REFER TO LANDSCAPE DRAWINGS FOR SOFT & HARDSCAPE DETAILS OF AMENITIES (E.G. GARDEN AREAS, PLANT BOXES ETC.)
2. FOR STAIR DETAILS, REFER TO SHEETS A-403 - A-412
3. FOR CORE DETAILS, REFER TO SHEETS A-401 - A-402
4. FOR BAY DETAILS, REFER TO SHEETS A-307 - A-309.
5. FOR WALL TYPES, REFER TO SHEET A-616.
6. FOR SETTING-OUT PLANS, REFER TO SHEETS A-401 - A-413
7. FOR SCHEDULE OF WINDOWS, REFER TO SHEET A-910
8. FOR SCHEDULE OF RAILINGS & LOUVERS, REFER TO SHEET A-915
9. FOR SCHEDULE OF DOORS, REFER TO SHEET A-908 - A-909
10. FOR SCHEDULE OF ROOM FINISHES, REFER TO SHEETS A-906 - A-908.
11. FOR MISCELLANEOUS DETAILS, REFER TO SHEETS A-1001 - A-1003
12. FOR TRANSPORTER, GINET, ET ROOM AND LIFT ROOM ROOM DETAILS REFER TO ELECTRICAL DRAWINGS.
13. FOR WATER METER ROOM, PUMP ROOM, WATER CISTERN DETAILS REFER TO PLUMBING DRAWINGS.
14. ALL ELEVATION MARKS ARE INDICATE OF FLOOR LEVEL. TRANSDUCER VERIFY ELEVATION MARKS WITH GEODETIC ENGINEERS AS BUILT SOURCE.



1
SIXTH FLOOR AMENITY PLAN
SCALE 1:6000

REVISIONS			
NO.	REASONS FOR REVISION	DATE	BY
1	COORDINATE CLEARANCE	02-28-2012	PRSP
2	REVISE DESIGN DEVELOPMENT	02-29-2012	PRSP
3	100% DESIGN DEVELOPMENT	03-28-2012	PRSP
4	CONSTRUCTION DOCUMENTS	06-22-2012	PRSP
5	FINAL CONSTRUCTION DOCUMENTS	11-16-2012	PRSP

PROJECT INFORMATION			
PROJECT:	AMALIA SKIES CUBAO PHASE 2		
OWNER:	AMALIA LAND CORPORATION		
LOCATION:	P. TULIZON CORNER EDSA, CUBAO, Q.C.		

ARCHITECT:	PRSP ARCHITECTS PIA NIENTEL RODRIGUEZ SIMBULAN & PARTNERS
STRUCTURAL ENGINEERING CONSULTANT:	SYA9 STRUCTURAL ENGINEERS
MIEP ENGINEERING CONSULTANT:	MWH MECHANICAL ENGINEERING CONSULTANTS
LANDSCAPE ARCHITECT:	E GROUP LANDSCAPE ARCHITECTS
ISSUED BY:	PRSP ARCHITECTS PIA NIENTEL RODRIGUEZ SIMBULAN & PARTNERS
PROJECT NO.:	287832
DATE ISSUED:	13 JAN 2011

PROJECT NO.:	0011270	PLACE ISSUED:	MANILA CITY
PROJECT NO.:	287832	DATE ISSUED:	13 JAN 2011
KEY PLAN:			
DRAWING TITLE:	SIXTH FLOOR AMENITY PLAN		
PACKAGE NAME:	FINAL CONSTRUCTION DOCUMENTS PACKAGE		
DOCUMENT TYPE:	ARCHITECTURAL DRAWING		
DRAWING STATUS:	CONSTRUCTION DOCUMENTS		
DRAWN BY:	PR/PAC	CHECKED BY:	PR/PAC
DATE:	11-16-2012	SCALE:	1:6000
PROJECT NO.:	2011-04-A-106		