



Condo in Mandaluyong

Pioneer Woodlands

📍 EDSA corner Pioneer St., Mandaluyong City



Ms. Kyla Castor
0961 308 3960
kyla.empireeast@gmail.com







TOWER 5

TOWER 6

WOODLAND PARK 2



TOWER 5

TOWER 6

TOWER 5

Ready For
Occupancy - Recent
Turn Over 2021

TOWER 5



Available Units

Unit C | F | N | O

Same Size

2 Bedroom

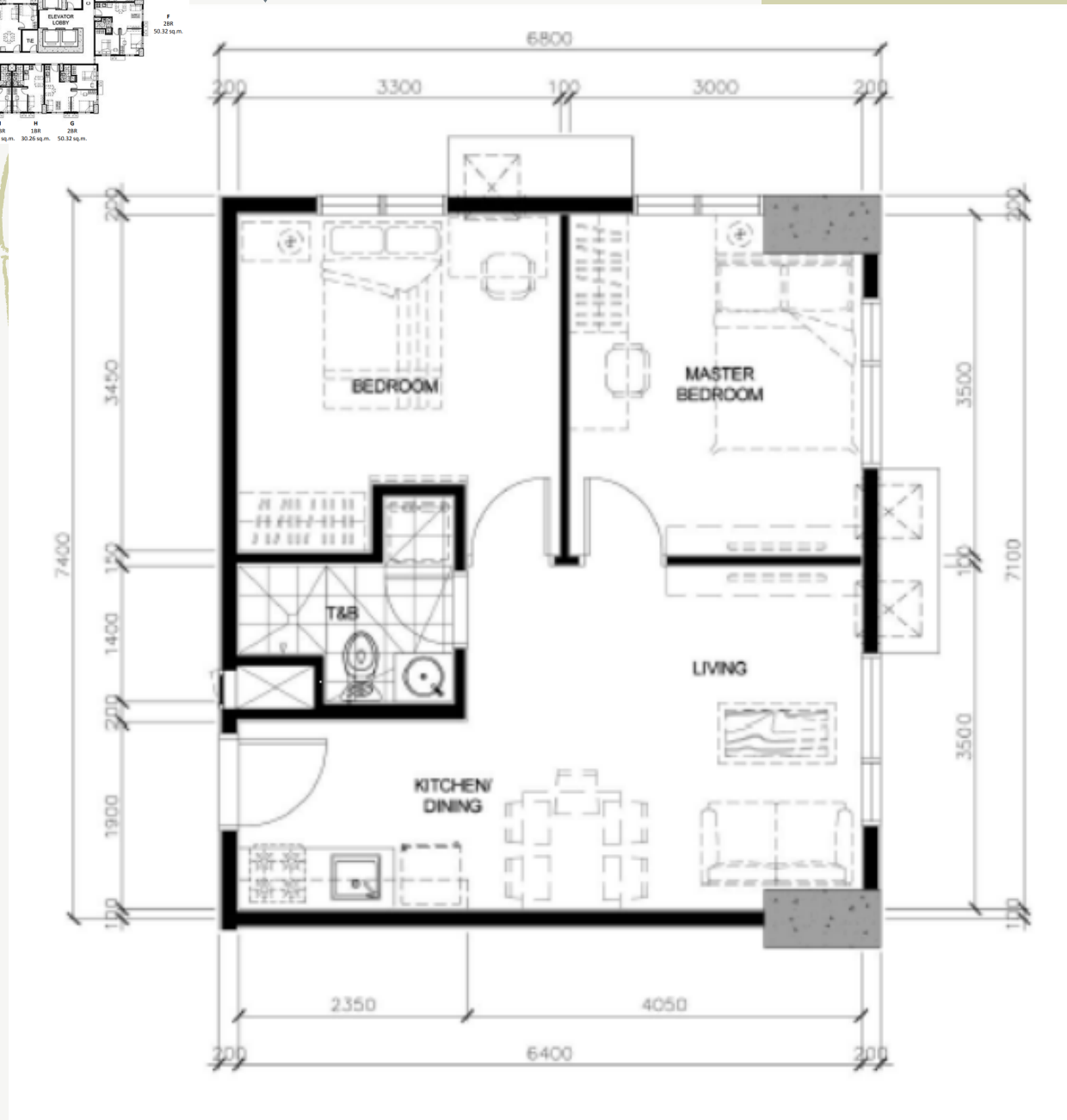
1 Toilet and Bath

50.32 sqm

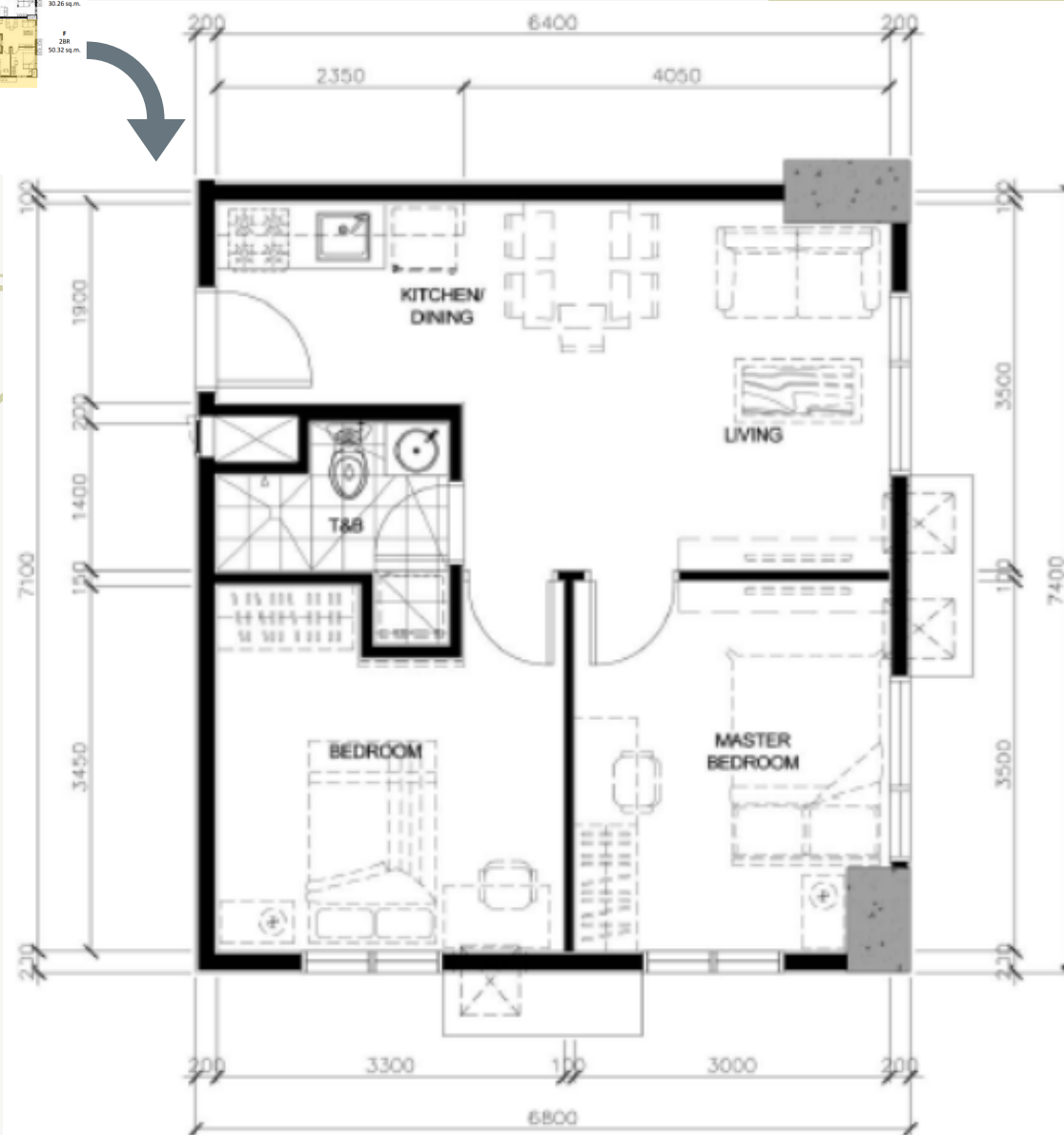
TOWER 5 Typical Floor Plan



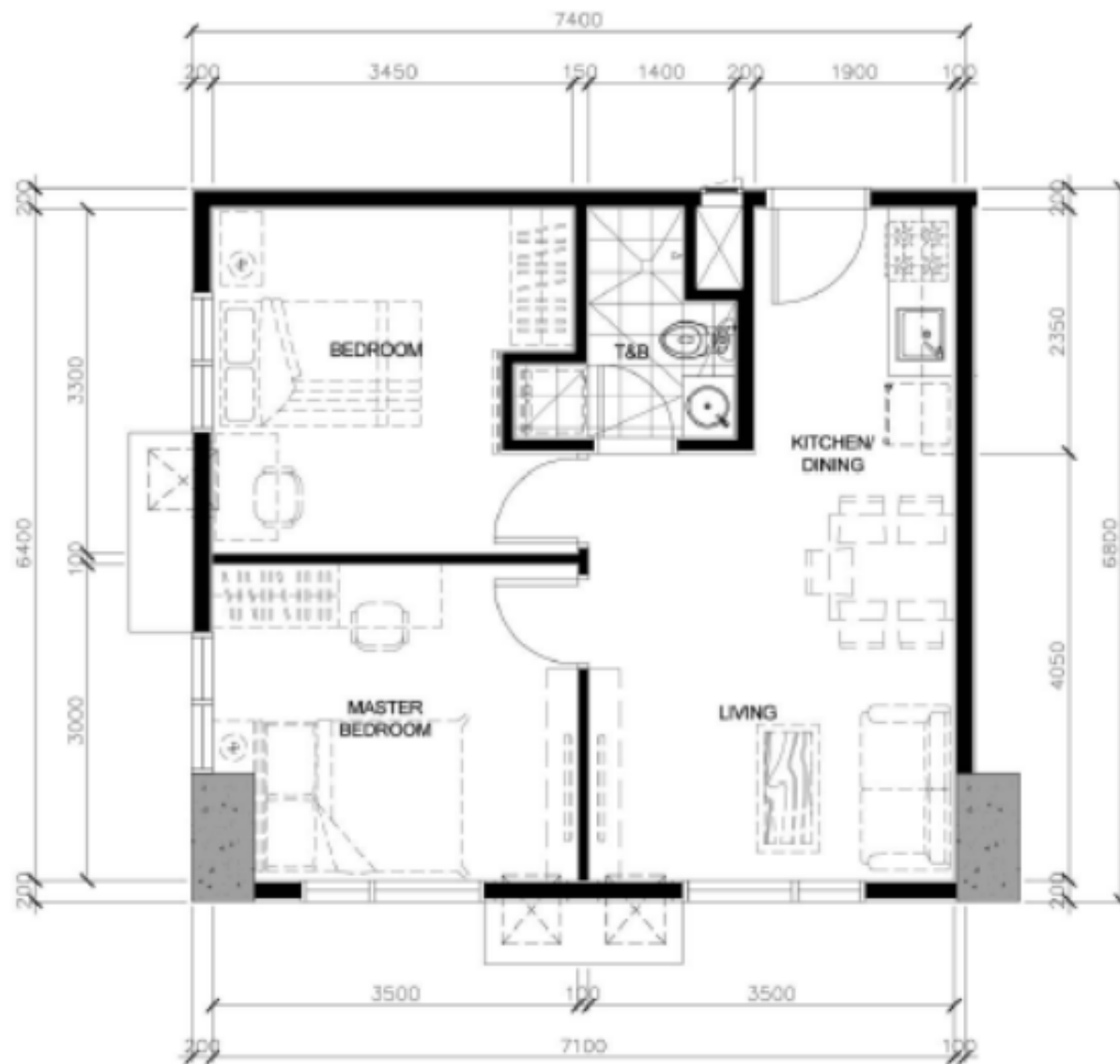
6th to 36th Level



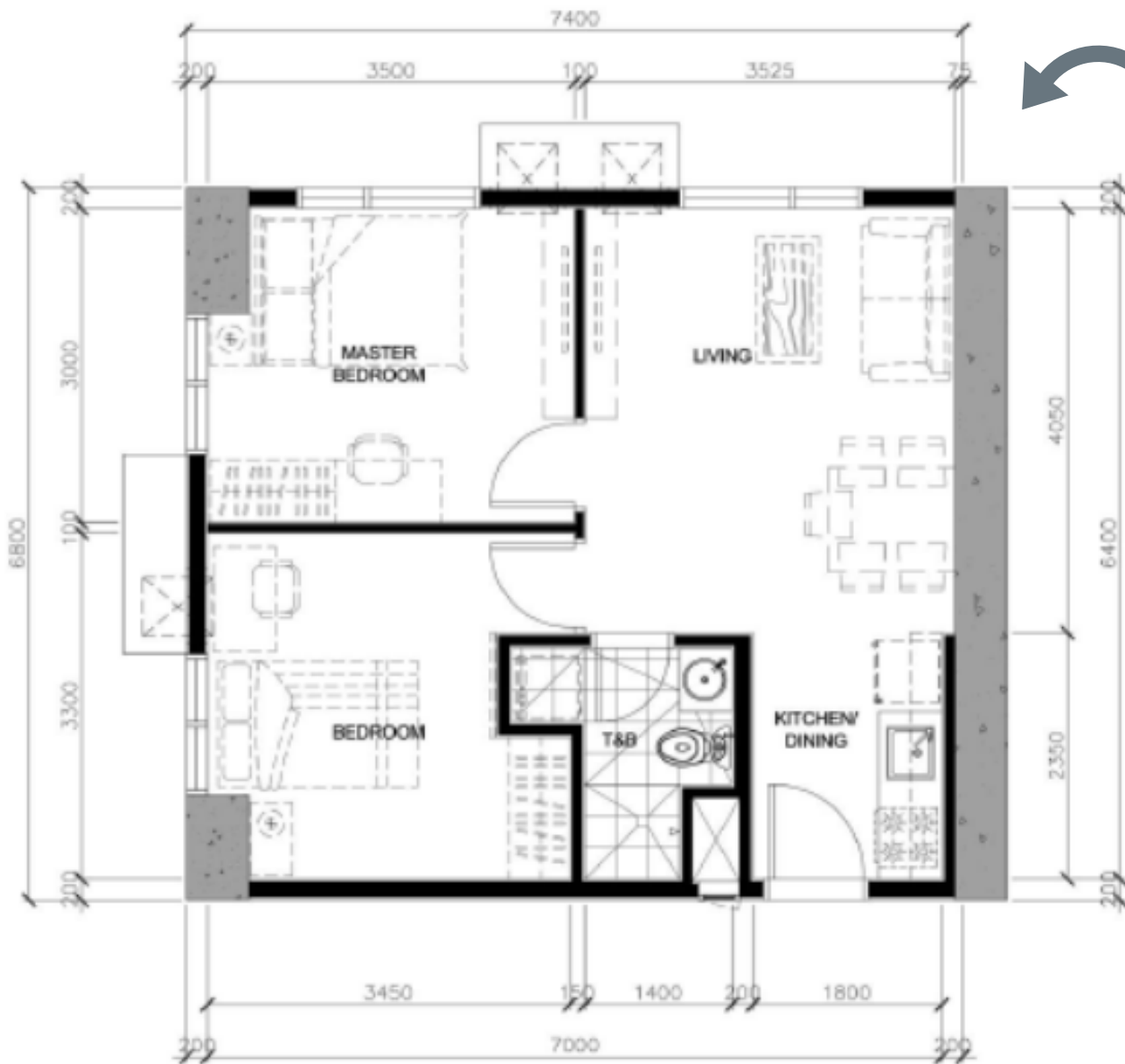
UNIT C



UNIT F



UNIT N





UNIT O





Ms. Kyla Castor

SALES PERSON

0961 308 3960 -  
kyla.empireeast@gmail.com



Empire East

CAM DIVISION