

世紀匯

CITY CLOU

by



Golden ToPPer

金 昇 企 業



# Golden ToPPer

金 昇 企 業

Founded only in early 2013, Golden Topper Enterprises held office in Hong Kong as its headquarters. With an assemblage of experienced technical professionals coming from established real estate developers in Mainland China, the group expanded its reach to the Philippines and formed a joint venture partnership to develop prime real estate projects in the country.

Through a joint pursuit between property owning corporations under Scarborough Equity and the locally incorporated developer subsidiaries of Golden Topper Enterprises, the Golden Topper brand was established in 2017.

Young in the industry but incredibly bullish, GT's brand has since gained traction as it continuously expands its growing real estate portfolio in Luzon and Visayas. Currently, there are six (6) Golden Topper branded projects located within the prime cities of Makati, Pasay, Las Pinas, Cebu, and Lapu-Lapu.

Envisioned to grow in depth and scale, Golden Topper intends to not only cater to the middle and high income market but become more inclusive in providing diverse and high quality living spaces for all. True to its slogan – "Better City, Better Life", GT aims to also provide related services that would improve and support all clients' needs and lifestyles.





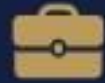
GOLDEN  
TOPPER

# IN OUR MISSION TO CREATE BETTER CITIES

Golden Topper is focused on developing eight areas to fill the need for high-quality, highly livable spaces that cater to the needs of large diversified communities.



RESIDENTIAL



OFFICE & INDUSTRY



RETAIL & COMMERCIAL



HOTEL & SERVICED APARTMENT



LEISURE



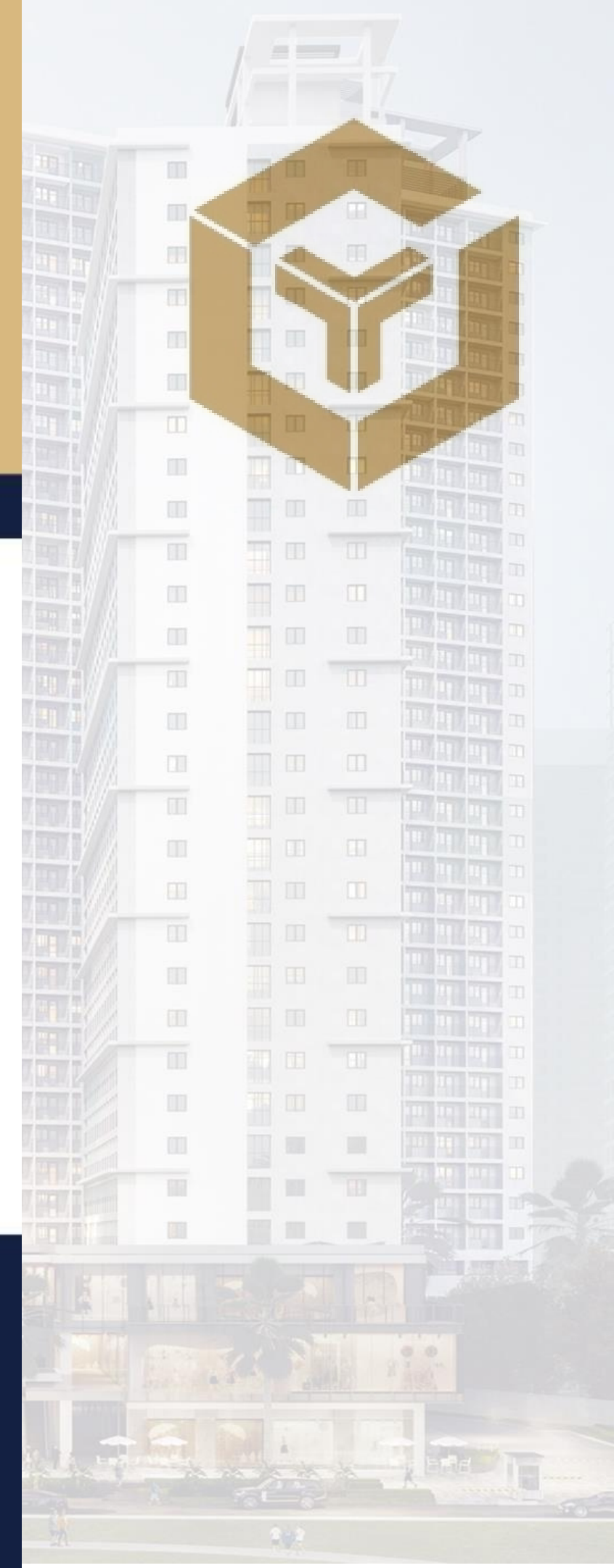
PROPERTY MANAGEMENT



CONSTRUCTION (VERTICAL & HORIZONTAL)



LOGISTICS



PROPERTY  
AWARDS  
2022



**WINNER**

**BEST DEVELOPER  
CEBU**

Golden Topper

Organised by  
**dotproperty**

**BEST DEVELOPER CEBU**



**GOLDEN  
TOPPER**

**GOLDEN TOPPER**



**SETTING A  
GOLDEN STANDARD**

Aspiring to set the golden standard for real estate and condo living, Golden Topper accepted the award for Best Developer in Cebu at the Dot Property Awards 2022, a prestigious international award-giving body for real estate developers.



**WINNER**

**BEST DEVELOPER  
CEBU**

**Golden Topper**

Organised by

**dotproperty**



**GOLDEN  
TOPPER**



**EXCELLENCE IN  
CRAFSTMANSHIP**

From design to construction, Golden Topper prides itself on its commitment to provide service of the highest quality to its clients. Our team of experts are dedicated to the careful and precise delivery of all our projects.

An architectural rendering of a modern high-rise building complex at dusk. The scene features several tall buildings with glass facades and balconies, illuminated from within. The sky is a deep blue, and the city lights in the background create a vibrant atmosphere. In the foreground, a few people are seen walking on a sidewalk, and a road with light trails from cars is visible. The overall mood is one of a bustling, modern urban environment.

## Welcome to Cebu's first-ever **Community Business District**

A mixed-use development offering residential, office, leisure, and retail in one vibrant community at the center of Cebu City.

世纪汇  
CITY CLOU

by Golden ToPPer  
金昇企業

# YOUR HOME AT THE CENTER OF CEBU CITY

City Clou's prime location allows premier access to the Cebu Business Park, top-notch medical facilities, educational institutions, shopping malls, nightlife hotspots, and other essential establishments.



Artist's perspective only.

CEBU'S FIRST-EVER  
**COMMUNITY  
BUSINESS  
DISTRICT**



- 1 Tower A (Res)
- 2 Tower B (Res)
- 3 Tower C (Res)
- 4 Tower D (Res)
- 5 Tower E (Office)
- 6 Clubhouse
- 7 Kiddie Pool
- 8 Lap Pool
- 9 Fun Pool
- 10 Meditation Garden
- 11 Kids Playground
- 12 Plaza
- 13 Commercial Component
- 14 Drop-off



世纪汇  
CITY CLOU

by Golden ToPPer  
金昇企業

世纪汇  
CITY CLOU  
TOWER



Artist's perspective only.

TB\_PERSPECTIVE\_20220125



世纪汇

# CITY CLOU

TOWER B

by  Golden ToPPer  
金昇企業

LOCATION

0549 D.Jakosalem St., Cebu City

UNIT TYPES

Studio, 1 bedroom and 2 Bedroom

UNIT SIZE RANGES

Studio  
±27 sqm to ±31.11sqm

1 bedroom  
±36.89 to 42.84 sqm

Two Bedroom  
±59.82 sqm

NO. OF FLOORS

34 physical floors

UNITS PER FLOOR

25 units per floor

# STUDIO

27.58-31.11 SQM



# 1 BEDROOM

36.89 -42.84 SQM





# 2 BEDROOM

59.82 SQM

世纪汇  
CITY CLOU

by Golden ToPPer  
金昇企業

**SPECTACULAR  
VIEWS & ABUNDANT  
NATURAL LIGHT**

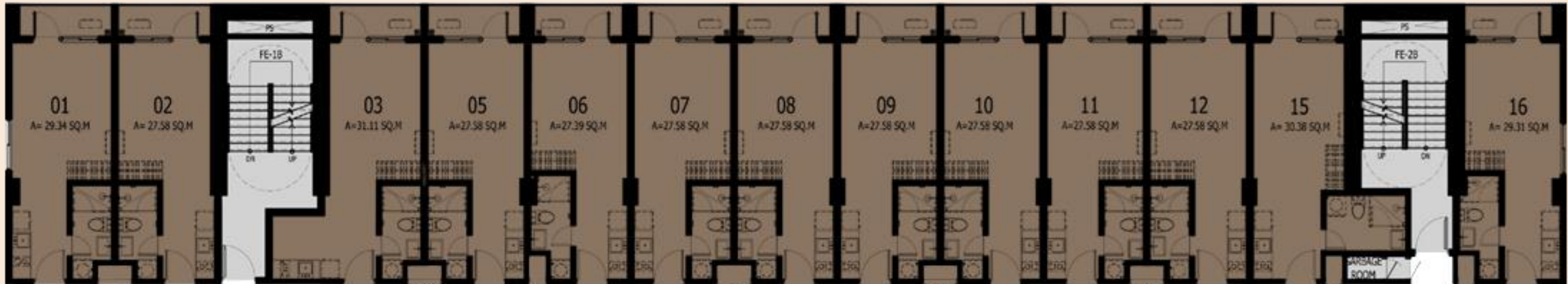
Artist's perspective only.

# TYPICAL FLOOR PLAN

Amenity View

Tower View

Sea View / City View



Partial Sea View / City View

Sea View / City View

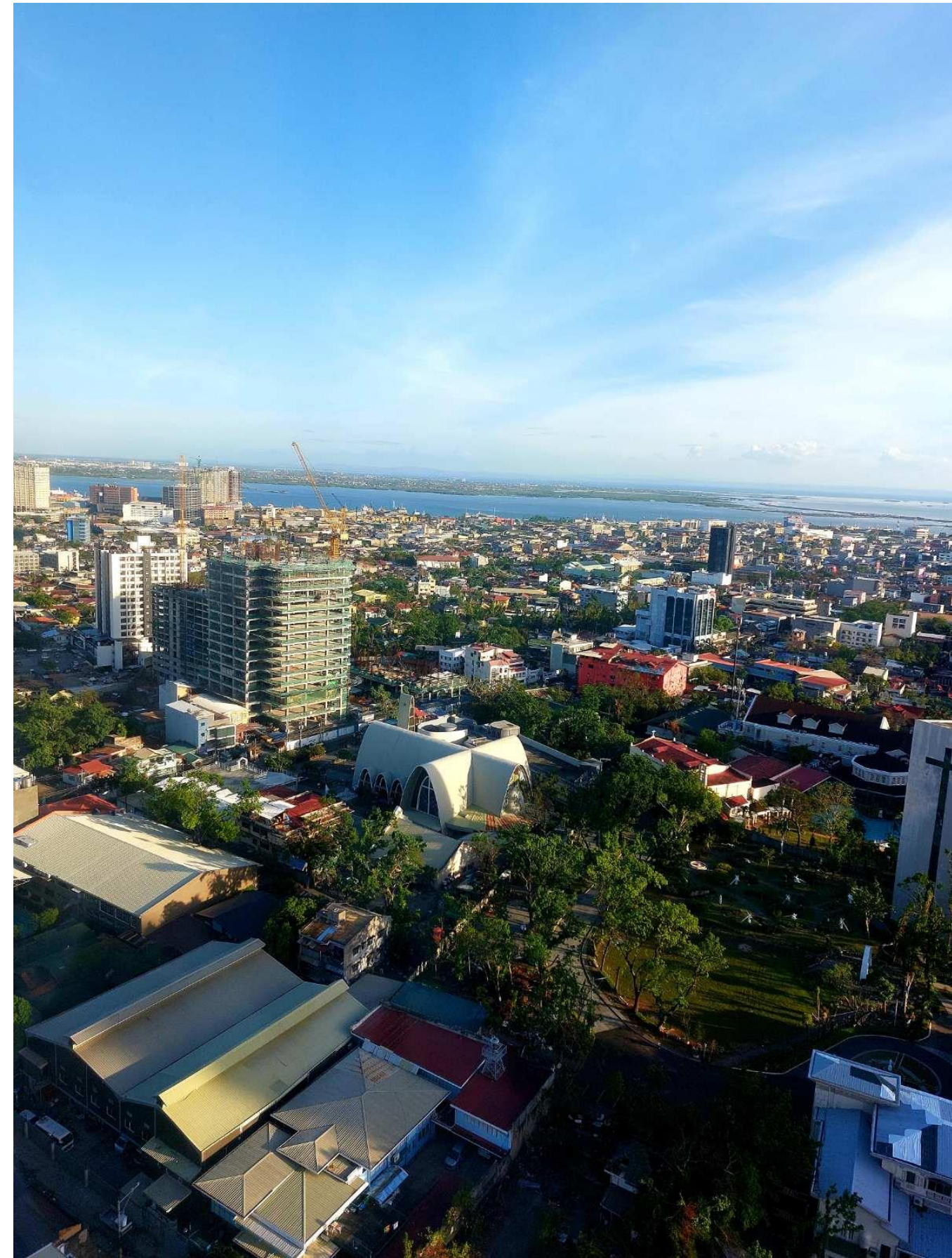
- STUDIO UNIT
- ONE BEDROOM
- TWO BEDROOM

Artist's perspective only.  
Project details and perspectives may be subject to additional changes.

Facing Sea view/City View



Facing Sea view/ Mactan Channel View



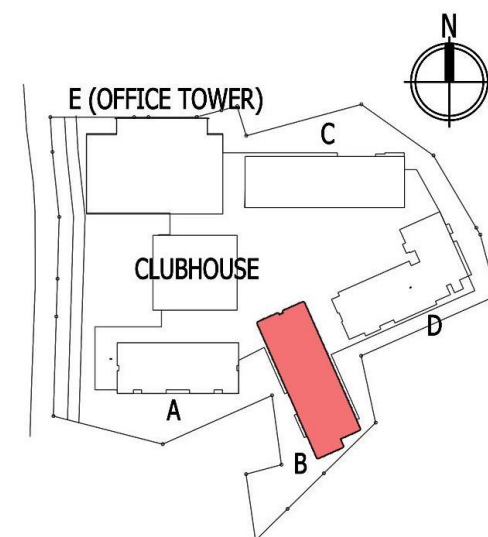


Roof Deck Area

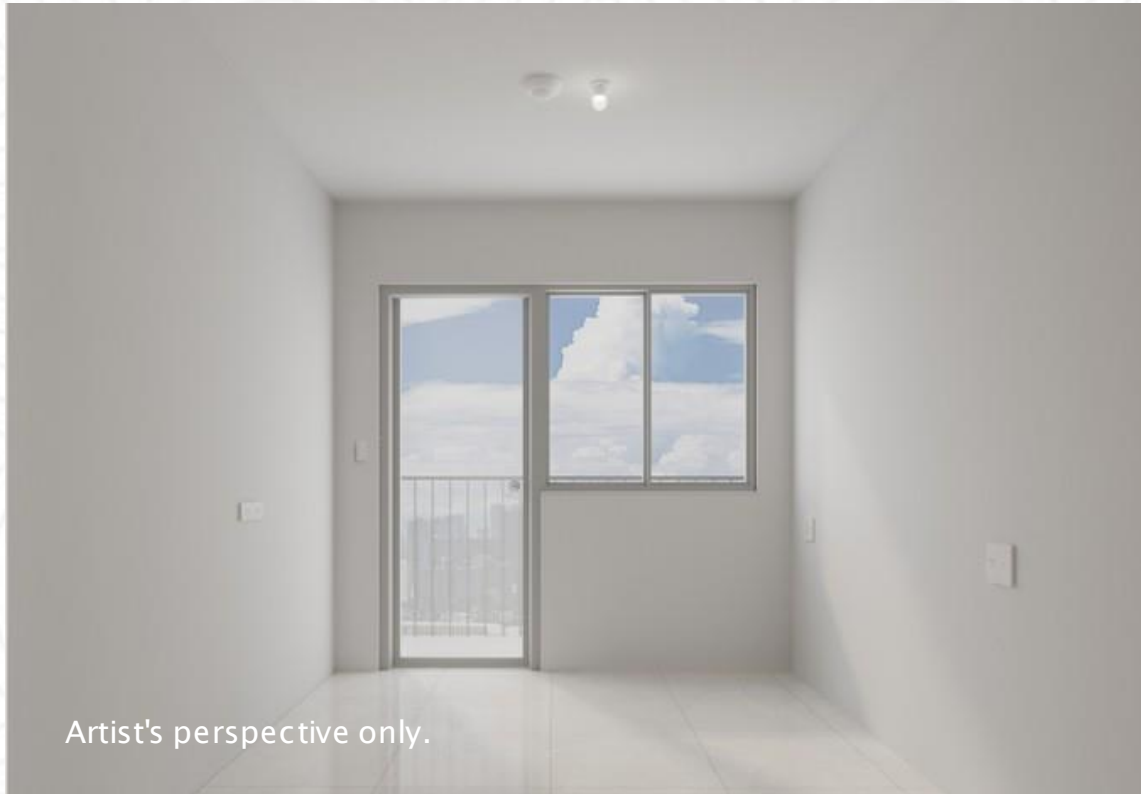




# ROOF DECK PLAN



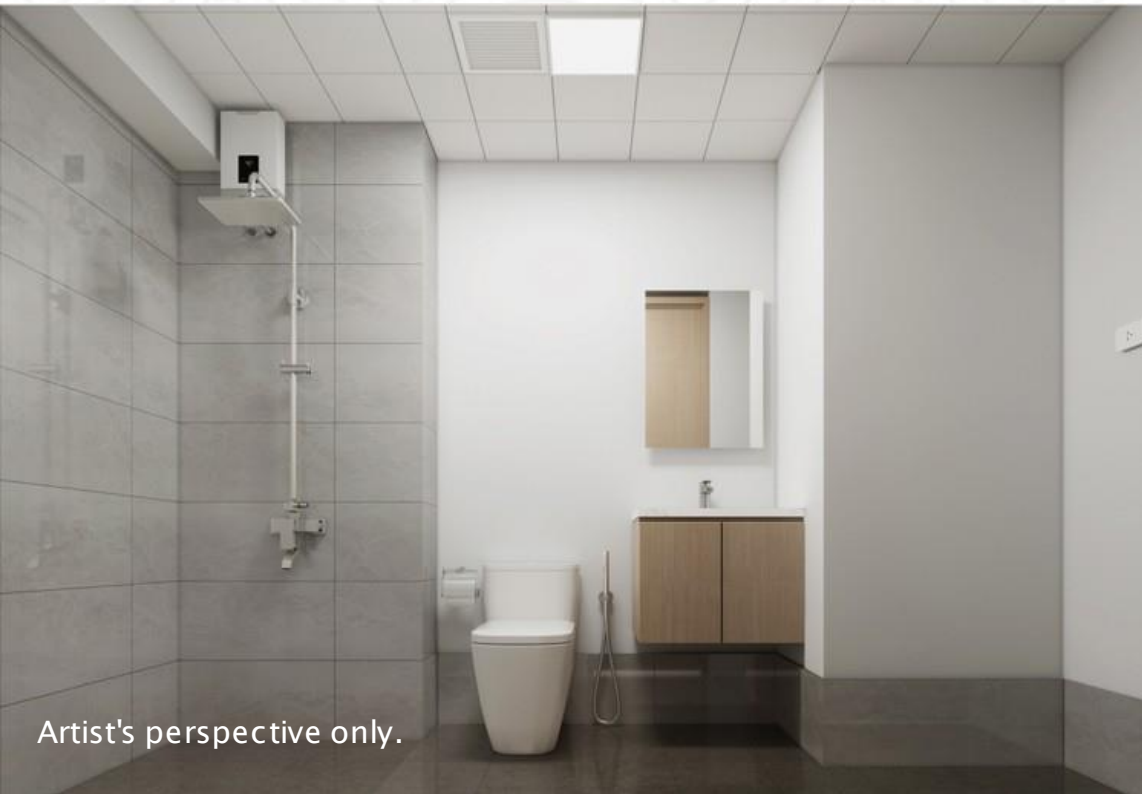
# DELIVERY STANDARDS



Artist's perspective only.



Artist's perspective only.



Artist's perspective only.

## BED & LIVING AREA

- WALL** Painted finish
- FLOOR** Tiles
- CLOSET** Laminated wood finish
- CEILING** Open ceiling  
concrete slab in paint finish

## BALCONY

- FLOOR** Tiles
- RAILS** Metal railing
- WALLS** Painted finish

## KITCHEN & DINING AREA

- WALL** Painted finish
- FLOOR** Tiles
- UNDER CABINET** Laminated wood finish
- OVER CABINET** Laminated wood finish
- COUNTERTOP** Solid surface
- CEILING** Gypsum board in paint finish
- FIXTURES** Sink with faucet

## TOILET & BATH

- WATER CLOSET** Standard water closet
- LAVATORY W/ FAUCET** Semi-pedestal with cabinet
- SHOWER SET** Included
- HANDSPRAY** Standard Handspray
- WALLS** Dry area – Painted finish  
Wet area – Tiles ( 1.8m high)
- FLOORING** Tiles
- CEILING** Aluminum panel ceiling
- FLOOR DRAIN** Included
- EXHAUST** Included
- TISSUEHOLDER** Included
- TOWELBAR** Included

世纪汇  
CITY CLOU

by Golden ToPPer  
金昇企業



Artist's perspective only.



世纪汇  
CITY CLOUD

by Golden TopPer  
金昇企業

Artist's perspective only.

LEISURE PARK

# AN URBAN RETREAT

- Pool Complex
- Gym
- Children's playroom
- Game Room
- Yoga Room/Dance Studio
- Meditation garden
- Karaoke Rooms
- Function Hall
- Study Room

世纪汇  
CITY CLOU

by Golden TopPer  
金昇企业



RETAIL AREA

Artist's perspective only.

世纪汇

# CITYCLOU

Golden TOPPER  
金 钻 企 業



Artist's perspective only.



POOL COMPLEX

Artist's perspective only.





# POOL COMPLEX

Artist's perspective only.

世纪汇  
CITY CLOU

by Golden TopPer  
金昇企業



CLUBHOUSE  
BAR & LOUNGE

Artist's perspective only.



FUNCTION HALL

世纪汇  
CITY CLOU

by Golden ToPPer  
金昇企业

KARAOKE ROOM

Artist's perspective only.



**CHESS ROOM**

Artist's perspective only.



## PLAYROOM

Artist's perspective only.

世纪汇  
CITY CLOU

by Golden TopPer  
金昇企业

BILLIARDS &  
PINGPONG AREA

Artist's perspective only.



世纪汇  
CITY CLOU

by Golden TopPer  
金昇企业



STUDY ROOM

Artist's perspective only.



世纪汇  
CITY CLOU

by Golden TopPer  
金昇企策

YOGA ROOM &  
DANCESTUDIO

Artist's perspective only.

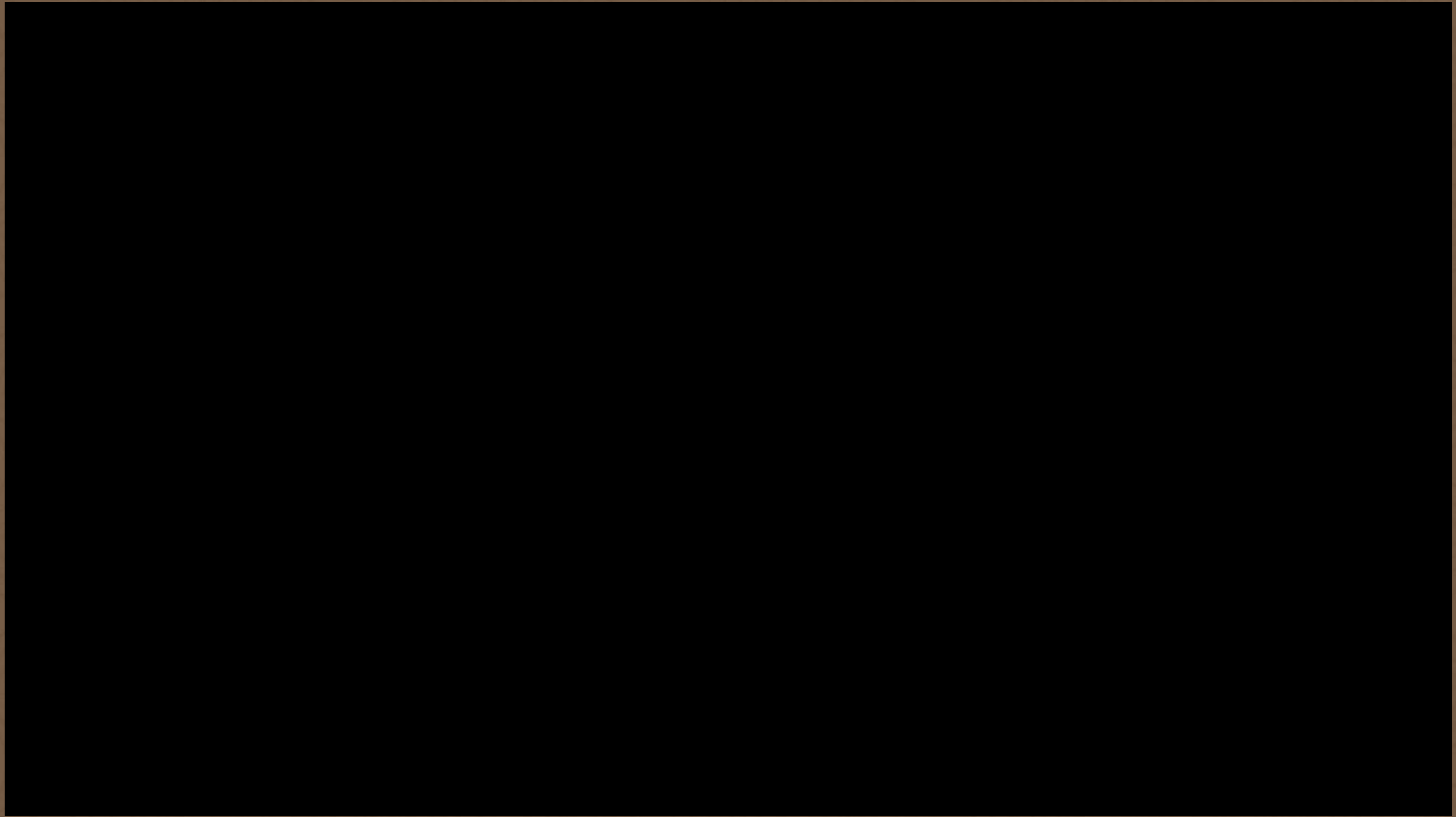
世纪汇  
CITY CLOUD

by Golden TopPer  
金昇企業



GYM

Artist's perspective only.



世紀匯  
CITY CLOU

Advertising Approval:

TOWER A – DHSUD LTS. No.: LS-R07-22-050

TOWER B – DHSUD LTS. No.: LS-R07-21-089

TOWER C – DHSUD LTS. No.: 034516

TOWER E – DHSUD LTS. No.: LS-R07-21-099

Project Completion Date:

TOWER A – September 30, 2025

TOWER B – November 30, 2026

TOWER C – December 2026

TOWER E – September 3, 2027

Project Location: 0549 D. Jakosalem St., Zapatera Cebu City

Project Developer: Kiddle Smart (Philippines) Inc.

Project Owner: Redland Properties Inc.

by



Golden ToPPer

金昇企業