

## ON-GOING WORKS

### Excavation Works

- Excavation completed.

### Civil/Structural/Architectural

- Ongoing rebar installation on columns (2nd lift)

### Mechanical Works

- Ongoing stair pressurization duct at fire exit.

### Electrical Works

- Ongoing installation of roughing-ins and lighting layout.

### Plumbing/ Sanitary

- Installation of perforated pipes for Basement 4 to 1

### Fire Protection

- Ongoing installation of roughing-ins.



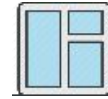
Excavation



Civil Works



Building  
Top-off



Start of Glass  
Installation



Building Water  
Tightness



Tested MEFP



Building  
Completion  
and Turnover

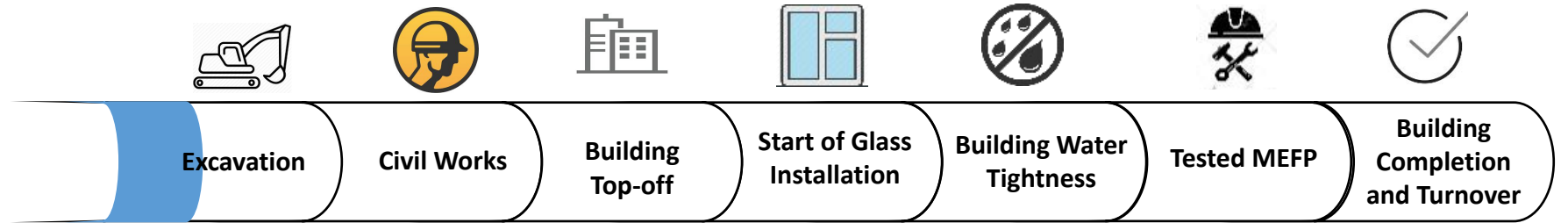
## PROGRESS PHOTOS



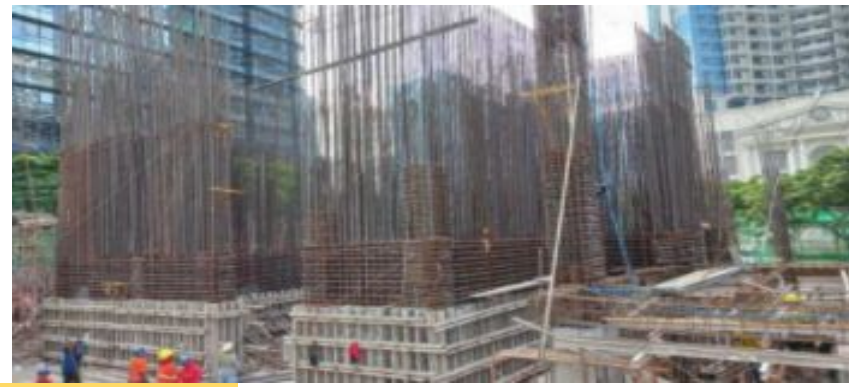
Basement 1 parking level

# PROJECT UPDATE

As of November 2021



## PROGRESS PHOTOS



Ground floor level area 2